

Product datasheet for **TA321801**

RASSF1 Rabbit Polyclonal Antibody

Product data:

Product Type:	Primary Antibodies
Applications:	IHC, WB
Recommended Dilution:	ELISA: 1:1000-5000, WB: 1:200-1000, IHC: 1:25-100
Reactivity:	Human, Mouse, Rat
Host:	Rabbit
Isotype:	IgG
Clonality:	Polyclonal
Immunogen:	Synthetic peptide corresponding to a region derived from 120-133 amino acids of human Ras association (RalGDS/AF-6) domain family member 1
Formulation:	PBS pH7.3, 0.05% NaN ₃ , 50% glycerol
Concentration:	lot specific
Purification:	Antigen affinity purification
Conjugation:	Unconjugated
Storage:	Store at -20°C as received.
Stability:	Stable for 12 months from date of receipt.
Predicted Protein Size:	39 kDa
Gene Name:	Ras association domain family member 1
Database Link:	NP_009113 Entrez Gene 56289 Mouse Entrez Gene 363140 Rat Entrez Gene 11186 Human Q9NS23
Background:	This gene encodes a protein similar to the RAS effector proteins. Loss or altered expression of this gene has been associated with the pathogenesis of a variety of cancers; which suggests the tumor suppressor function of this gene. The inactivation of this gene was found to be correlated with the hypermethylation of its CpG-island promoter region. The encoded protein was found to interact with DNA repair protein XPA. The protein was also shown to inhibit the accumulation of cyclin D1; and thus induce cell cycle arrest. Several alternatively spliced transcript variants of this gene encoding distinct isoforms have been reported.
Synonyms:	123F2; NORE2A; RASSF1A; RDA32; REH3P21

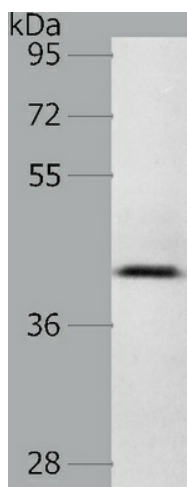


[View online »](#)

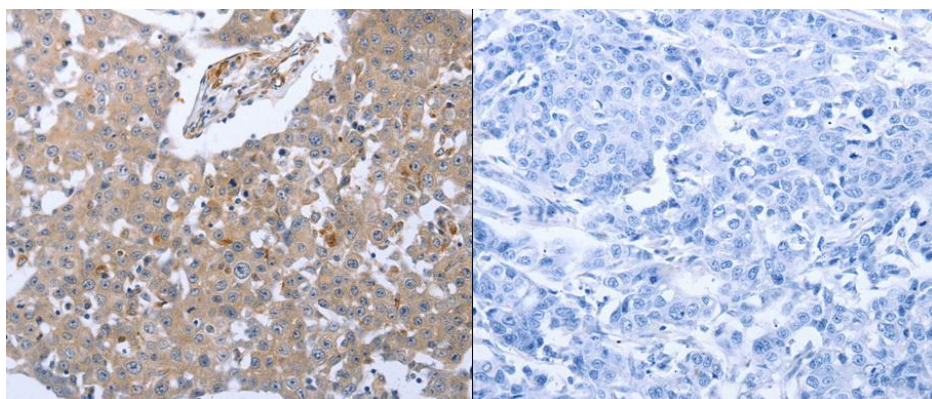
Protein Families: Druggable Genome

Protein Pathways: Bladder cancer, Non-small cell lung cancer, Pathways in cancer

Product images:



Predicted band size: 39 kDa. Positive control: Mouse brain tissue lysate. Recommended dilution: 1/200-1000. (Gel: 10%SDS-PAGE Lysate: 40 ug per lane Primary antibody: 1/550 dilution Secondary antibody: Goat anti Rabbit IgG - H&L (HRP) at 1/10000 dilution Exposure time: 2 minutes)



Predicted cell location: Cytoplasm. Positive control: Human breast cancer tissue. Recommended dilution: 1/25-100 The image on the left is immunohistochemistry of paraffin-embedded human breast cancer tissue using RASSF1 antibody at dilution 1/30, on the right is treated with the synthetic peptide. (Original magnification:x200)