

Product datasheet for **TA321800**

VCP Rabbit Polyclonal Antibody

Product data:

Product Type:	Primary Antibodies
Applications:	IHC, WB
Recommended Dilution:	WB: 500-2000 WB positive control: A549 cells IHC: 25-100 Positive control: Human gastric cancer Predicted cell location: Cytoplasm
Reactivity:	Human, Mouse, Rat
Host:	Rabbit
Isotype:	IgG
Clonality:	Polyclonal
Immunogen:	Synthetic peptide corresponding to a region derived from 792-806 amino acids of human valosin containing protein
Formulation:	PBS pH7.3, 0.05% NaN ₃ , 50% glycerol
Concentration:	lot specific
Purification:	Antigen affinity purification
Conjugation:	Unconjugated
Storage:	Store at -20°C as received.
Stability:	Stable for 12 months from date of receipt.
Predicted Protein Size:	90 kDa
Gene Name:	valosin containing protein
Database Link:	NP_009057 Entrez Gene 116643 Rat Entrez Gene 269523 Mouse Entrez Gene 7415 Human P55072



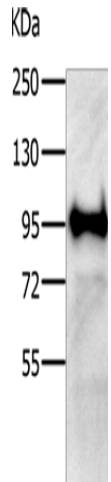
[View online »](#)

Background:

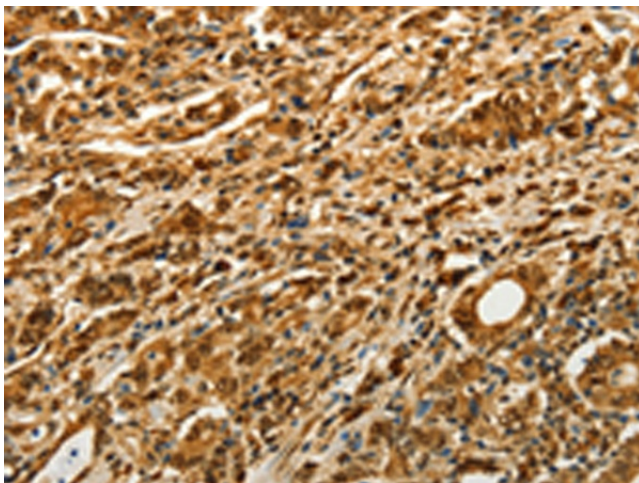
The protein encoded by this gene is a member of a family that includes putative ATP-binding proteins involved in vesicle transport and fusion; 26S proteasome function; and assembly of peroxisomes. This protein; as a structural protein; is associated with clathrin; and heat-shock protein Hsc70; to form a complex. It has been implicated in a number of cellular events that are regulated during mitosis; including homotypic membrane fusion; spindle pole body function; and ubiquitin-dependent protein degradation.

Synonyms:

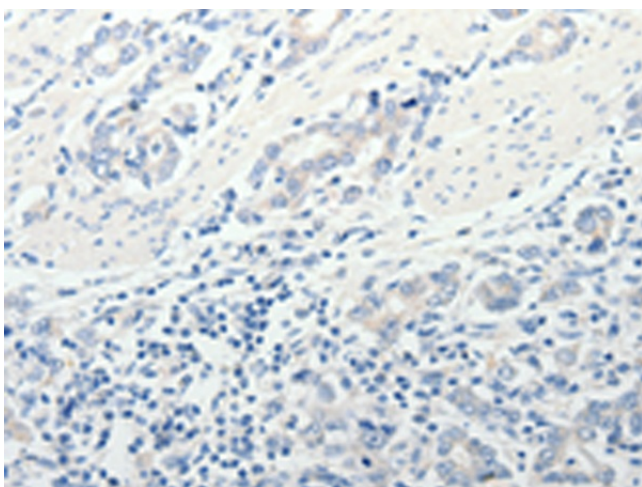
ALS14; CMT2Y; HEL-220; HEL-S-70; IBMPFD; IBMPFD1; p97; TERA

Product images:


Gel: 8%SDS-PAGE
 Lysate: 40 µg
 Lane: A549 cells
 Primary antibody: TA321800 (VCP Antibody) at dilution 1/300
 Secondary antibody: Goat anti rabbit IgG at 1/8000 dilution
 Exposure time: 5 seconds



Immunohistochemistry of paraffin-embedded Human gastric cancer tissue using TA321800 (VCP Antibody) at dilution 1/13 (Original magnification: ×200)



Immunohistochemistry of paraffin-embedded Human gastric cancer tissue using TA321800 (VCP Antibody) at dilution 1/13, treated with synthetic peptide. (Original magnification: ×200)