

Product datasheet for **TA321797**

Nogo A (RTN4) Rabbit Polyclonal Antibody

Product data:

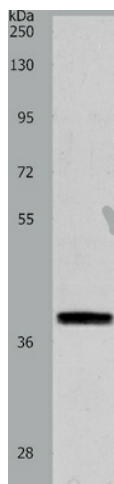
Product Type:	Primary Antibodies
Applications:	IHC, WB
Recommended Dilution:	ELISA: 1:2000-10000, WB: 1:500-2000, IHC: 1:50-200
Reactivity:	Human, Mouse, Rat
Host:	Rabbit
Isotype:	IgG
Clonality:	Polyclonal
Immunogen:	Synthetic peptide corresponding to a region derived from 1179-1194 amino acids of Human reticulon 4
Formulation:	PBS pH7.3, 0.05% NaN ₃ , 50% glycerol
Concentration:	lot specific
Purification:	Antigen affinity purification
Conjugation:	Unconjugated
Storage:	Store at -20°C as received.
Stability:	Stable for 12 months from date of receipt.
Predicted Protein Size:	40 kDa
Gene Name:	reticulon 4
Database Link:	NP_008939 Entrez Gene 68585 MouseEntrez Gene 83765 RatEntrez Gene 57142 Human Q9NQC3
Background:	This gene belongs to the family of reticulon encoding genes. Reticulons are associated with the endoplasmic reticulum; and are involved in neuroendocrine secretion or in membrane trafficking in neuroendocrine cells. The product of this gene is a potent neurite outgrowth inhibitor which may also help block the regeneration of the central nervous system in higher vertebrates. Alternatively spliced transcript variants derived both from differential splicing and differential promoter usage and encoding different isoforms have been identified.
Synonyms:	250; ASY; Nbla00271; Nbla10545; NI220; NOGO; NOGO-A; Nogo-B; Nogo-C; NOGOC; NSP; NSP-CL; RTN-X; RTN4-A



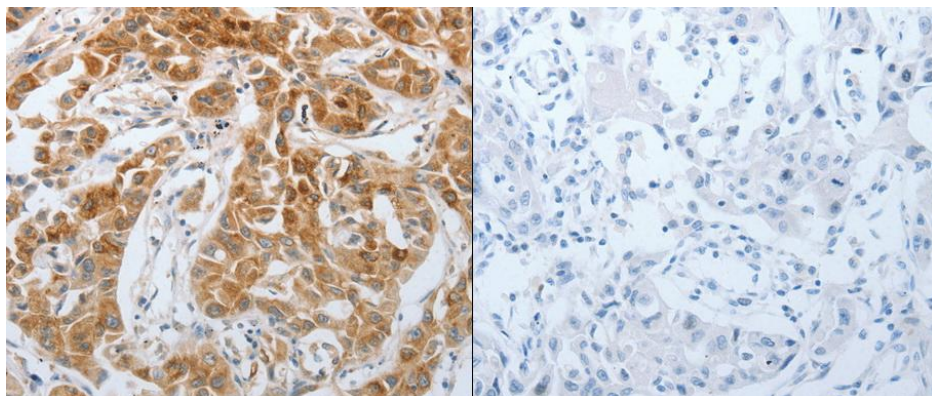
[View online »](#)

Protein Families: Transmembrane

Product images:



Predicted band size: 40 kDa. Positive control: RAW264.7 cell lysate. Recommended dilution: 1/500-2000. (Gel: 12%SDS-PAGE Lysate: 40 ug per lane Primary antibody: 1/900 dilution Secondary antibody: Goat anti Rabbit IgG - H&L (HRP) at 1/10000 dilution Exposure time: 1 minute)



Predicted cell location: Cytoplasm. Positive control: Human lung cancer tissue. Recommended dilution: 1/50-200 The image on the left is immunohistochemistry of paraffin-embedded human lung cancer tissue using RTN4 antibody at dilution 1/40, on the right is treated with the synthetic peptide. (Original magnification:x200)