

## Product datasheet for **TA321791**

### Glucose Transporter GLUT3 (SLC2A3) Rabbit Polyclonal Antibody

#### Product data:

Product Type:	Primary Antibodies
Applications:	IHC
Recommended Dilution:	IHC: 50-200 Positive control: Human colon cancer Predicted cell location: Cytoplasm, Cell membrane
Reactivity:	Human
Host:	Rabbit
Isotype:	IgG
Clonality:	Polyclonal
Immunogen:	Synthetic peptide peptide corresponding to a region derived from 466-479 amino acids of human solute carrier family 2 (facilitated glucose transporter), member 3
Formulation:	PBS pH7.3, 0.05% NaN <sub>3</sub> , 50% glycerol
Concentration:	lot specific
Purification:	Antigen affinity purification
Conjugation:	Unconjugated
Storage:	Store at -20°C as received.
Stability:	Stable for 12 months from date of receipt.
Gene Name:	solute carrier family 2 member 3
Database Link:	<a href="#">NP_008862</a> <a href="#">Entrez Gene 6515 Human</a> <a href="#">P11169</a>



[View online »](#)

**Background:**

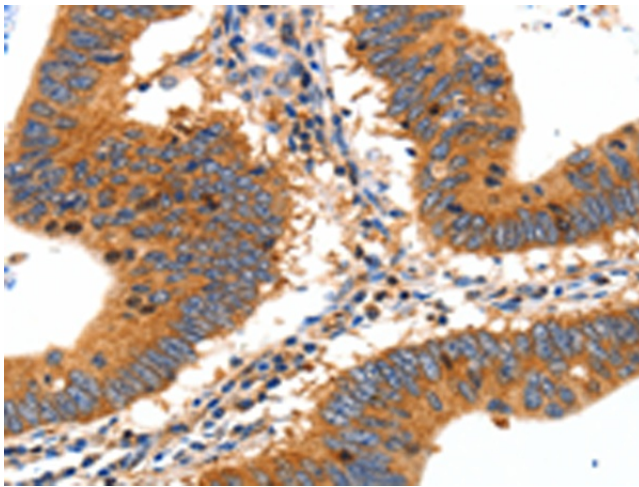
Glucose transporter 3 (or GLUT3); also known as solute carrier family 2; facilitated glucose transporter member 3 (SLC2A3) is a protein that in humans is encoded by the SLC2A3 gene. GLUT3 facilitates the transport of glucose across the plasma membranes of mammalian cells. GLUT3 is most known for its specific expression in neurons and has originally been designated as the neuronal GLUT. GLUT3 has been studied in other cell types with specific glucose requirements; including sperm; preimplantation embryos; circulating white blood cells and carcinoma cell lines. GLUT3 has both a higher affinity for glucose and at least a fivefold greater transport capacity than GLUT1; GLUT2 and GLUT4; which is particularly significant for its role in neuronal glucose transport; where ambient glucose levels are fivefold lower than in serum.

**Synonyms:**

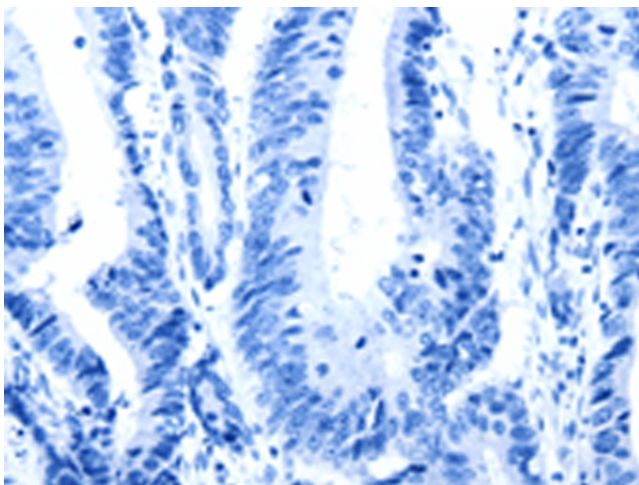
GLUT3

**Protein Families:**

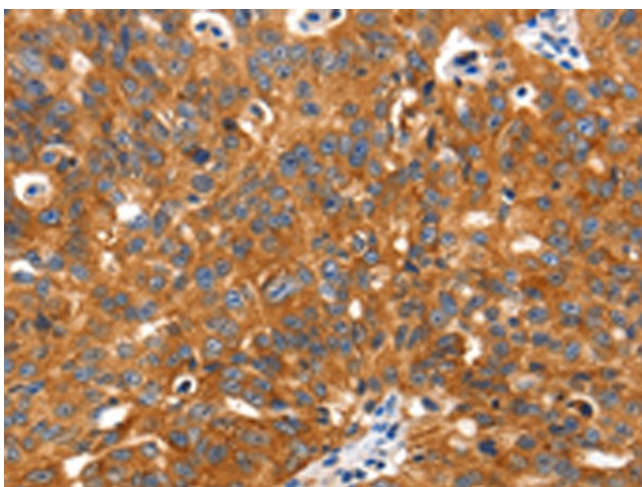
Transmembrane

**Product images:**

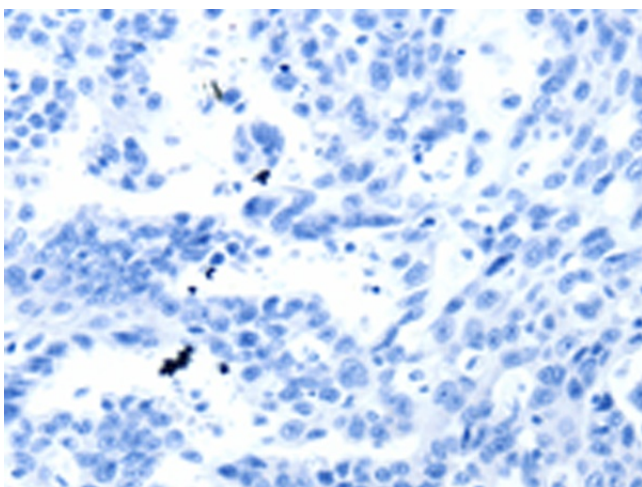
Immunohistochemistry of paraffin-embedded Human colon cancer tissue using TA321791 (SLC2A2 Antibody) at dilution 1/30 (Original magnification:  $\times 200$ )



Immunohistochemistry of paraffin-embedded Human colon cancer tissue using TA321791 (SLC2A2 Antibody) at dilution 1/30, treated with synthetic peptide. (Original magnification:  $\times 200$ )



Immunohistochemistry of paraffin-embedded Human ovarian cancer tissue using TA321791 (SLC2A2 Antibody) at dilution 1/30 (Original magnification: ×200)



Immunohistochemistry of paraffin-embedded Human ovarian cancer tissue using TA321791 (SLC2A2 Antibody) at dilution 1/30, treated with synthetic peptide. (Original magnification: ×200)