

Product datasheet for **TA321787**

GJB6 Rabbit Polyclonal Antibody

Product data:

Product Type:	Primary Antibodies
Applications:	IHC
Recommended Dilution:	IHC: 15-50 Positive control: Human breast cancer Predicted cell location: Cytoplasm
Reactivity:	Human, Mouse
Host:	Rabbit
Isotype:	IgG
Clonality:	Polyclonal
Immunogen:	Synthetic peptide corresponding to a region derived from 247-261 amino acids of Human gap junction protein, beta 6, 30kDa
Formulation:	PBS pH7.3, 0.05% NaN ₃ , 50% glycerol
Concentration:	lot specific
Purification:	Antigen affinity purification
Conjugation:	Unconjugated
Storage:	Store at -20°C as received.
Stability:	Stable for 12 months from date of receipt.
Gene Name:	gap junction protein beta 6
Database Link:	NP_006774 Entrez Gene 14623 Mouse Entrez Gene 10804 Human O95452



[View online »](#)

Background:

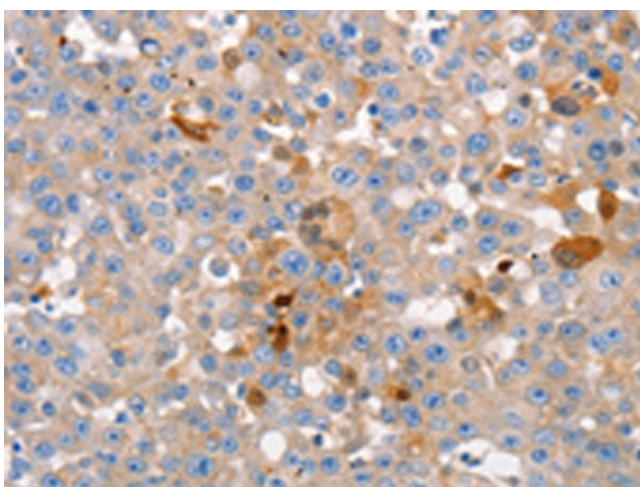
Gap junctions allow the transport of ions and metabolites between the cytoplasm of adjacent cells. They are formed by two hemichannels; made up of six connexin proteins assembled in groups. Each connexin protein has four transmembrane segments; two extracellular loops; a cytoplasmic loop formed between the two inner transmembrane segments; and the N- and C-terminus both being in the cytoplasm. The specificity of the gap junction is determined by which connexin proteins comprise the hemichannel. In the past; connexin protein names were based on their molecular weight; however the new nomenclature uses sequential numbers based on which form (alpha or beta) of the gap junction is present. This gene encodes one of the connexin proteins. Mutations in this gene have been found in some forms of deafness and in some families with hidrotic ectodermal dysplasia.

Synonyms:

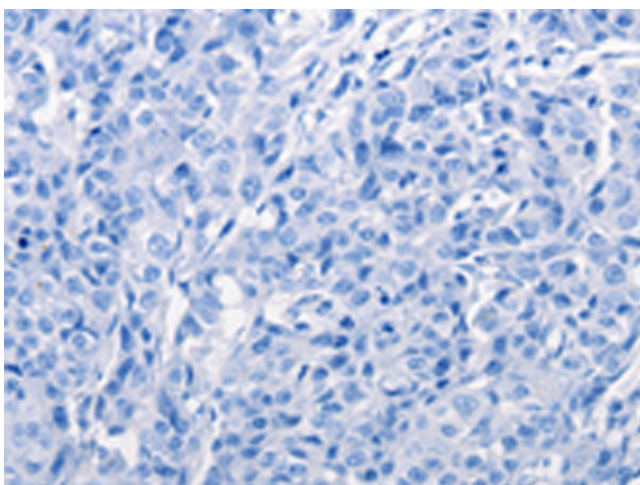
CX30; DFNA3; DFNA3B; DFNB1B; ECTD2; ED2; EDH; HED; HED2

Protein Families:

Druggable Genome, Transmembrane

Product images:

Immunohistochemistry of paraffin-embedded Human breast cancer tissue using TA321787 (GJB6 Antibody) at dilution 1/15 (Original magnification: $\times 200$)



Immunohistochemistry of paraffin-embedded Human breast cancer tissue using TA321787 (GJB6 Antibody) at dilution 1/15, treated with synthetic peptide. (Original magnification: $\times 200$)