

Product datasheet for **TA321785**

GJB6 Rabbit Polyclonal Antibody

Product data:

Product Type:	Primary Antibodies
Applications:	IHC, WB
Recommended Dilution:	ELISA: 1:1000-5000, WB: 1:500-2000, IHC: 1:10-50
Reactivity:	Human, Mouse, Rat
Host:	Rabbit
Isotype:	IgG
Clonality:	Polyclonal
Immunogen:	Synthetic peptide corresponding to a region derived from 230-245 amino acids of Human Gap junction beta-6 protein
Formulation:	PBS pH7.3, 0.05% NaN ₃ , 50% glycerol
Concentration:	lot specific
Purification:	Antigen affinity purification
Conjugation:	Unconjugated
Storage:	Store at -20°C as received.
Stability:	Stable for 12 months from date of receipt.
Predicted Protein Size:	30 kDa
Gene Name:	gap junction protein beta 6
Database Link:	NP_006774 Entrez Gene 14623 MouseEntrez Gene 84403 RatEntrez Gene 10804 Human O95452



[View online »](#)

Background:

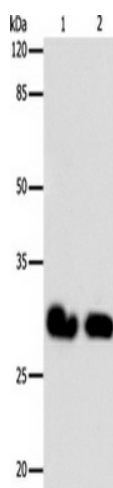
Gap junctions allow the transport of ions and metabolites between the cytoplasm of adjacent cells. They are formed by two hemichannels; made up of six connexin proteins assembled in groups. Each connexin protein has four transmembrane segments; two extracellular loops; a cytoplasmic loop formed between the two inner transmembrane segments; and the N- and C-terminus both being in the cytoplasm. The specificity of the gap junction is determined by which connexin proteins comprise the hemichannel. In the past; connexin protein names were based on their molecular weight; however the new nomenclature uses sequential numbers based on which form (alpha or beta) of the gap junction is present. This gene encodes one of the connexin proteins. Mutations in this gene have been found in some forms of deafness and in some families with hidrotic ectodermal dysplasia.

Synonyms:

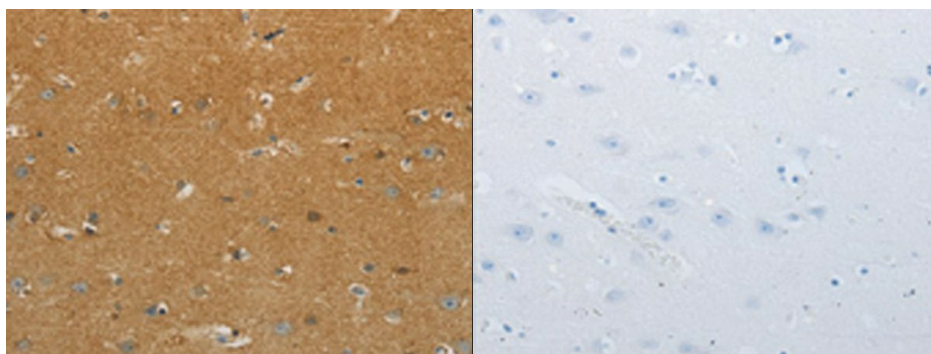
CX30; DFNA3; DFNA3B; DFNB1B; ECTD2; ED2; EDH; HED; HED2

Protein Families:

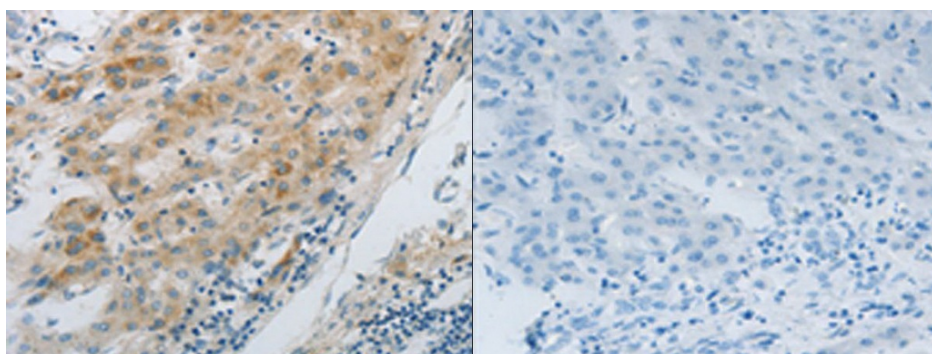
Druggable Genome, Transmembrane

Product images:

Gel: 10%SDS-PAGE, Lysate: 24 ug, Lane 1-2: 293T cells, Hela cells, Primary antibody: GJB6 Antibody at dilution 1/600, Secondary antibody: Goat anti rabbit IgG at 1/8000 dilution, Exposure time: 2 minutes



The image on the left is immunohistochemistry of paraffin-embedded Human brain tissue using GJB6 Antibody at dilution 1/30, on the right is treated with synthetic peptide. (Original magnification: $\times 200$)



The image on the left is immunohistochemistry of paraffin-embedded Human liver cancer tissue using GJB6 Antibody at dilution 1/30, on the right is treated with synthetic peptide. (Original magnification: $\times 200$)