

Product datasheet for **TA321784**

BTG2 Rabbit Polyclonal Antibody

Product data:

Product Type:	Primary Antibodies
Applications:	IHC, WB
Recommended Dilution:	WB: 500-2000 WB positive control: Mouse lung tissue, Jurkat, 293T, K562 cell, Mouse brain tissue, Mouse kidney tissue, 231 cell lysates IHC: 100-300 Positive control: Human cervical cancer Predicted cell location: Cytoplasm
Reactivity:	Human, Mouse, Rat
Host:	Rabbit
Isotype:	IgG
Clonality:	Polyclonal
Immunogen:	Full length fusion protein
Formulation:	PBS pH7.3, 0.05% NaN ₃ , 50% glycerol
Concentration:	lot specific
Purification:	Antigen affinity purification
Conjugation:	Unconjugated
Storage:	Store at -20°C as received.
Stability:	Stable for 12 months from date of receipt.
Predicted Protein Size:	17 kDa
Gene Name:	BTG family member 2
Database Link:	NP_006754 Entrez Gene 12227 Mouse Entrez Gene 29619 Rat Entrez Gene 7832 Human P78543



[View online »](#)

Background:

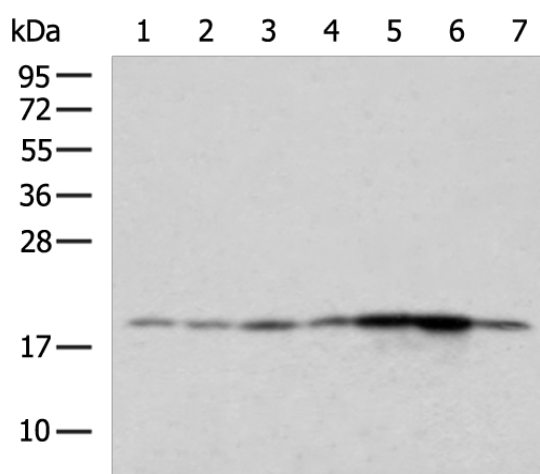
The protein encoded by this gene is a member of the BTG/Tob family. This family has structurally related proteins that appear to have antiproliferative properties. This encoded protein is involved in the regulation of the G1/S transition of the cell cycle. Protein BTG2 also known as BTG family member 2 or NGF-inducible anti-proliferative protein PC3 or NGF-inducible protein TIS21; is a protein that in humans is encoded by the BTG2 gene (B-cell translocation gene 2) and in other mammals by the homologous Btg2 gene. This protein controls cell cycle progression and proneural genes expression by acting as a transcription coregulator that enhances or inhibits the activity of transcription factors.

Synonyms:

APRO1; PC3; TIS21

Protein Families:

Transcription Factors

Product images:


Gel: 12%SDS-PAGE

Lysate: 40 µg

Lane 1-7: Mouse lung tissue

Jurkat

293T

K562 cell

Mouse brain tissue

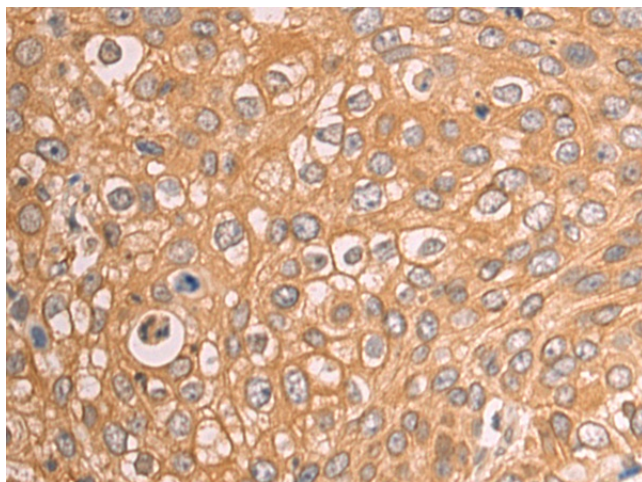
Mouse kidney tissue

231 cell lysates

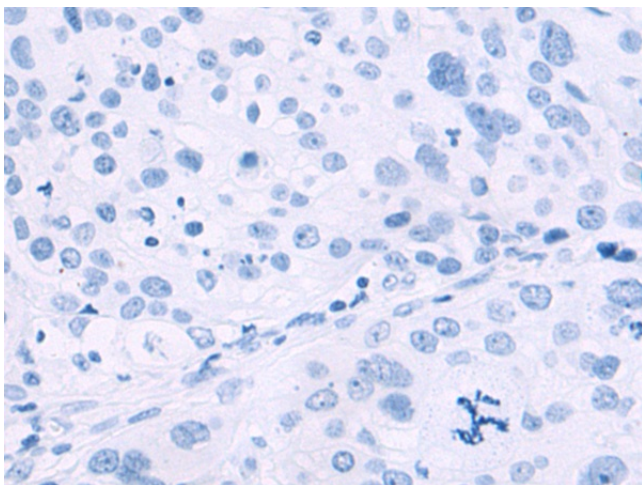
Primary antibody: TA321784 (BTG2 Antibody) at dilution 1/500

Secondary antibody: Goat anti rabbit IgG at 1/5000 dilution

Exposure time: 1 minute



Immunohistochemistry of paraffin-embedded Human cervical cancer tissue using TA321784 (BTG2 Antibody) at dilution 1/95 (Original magnification: ×200)



Immunohistochemistry of paraffin-embedded Human cervical cancer tissue using TA321784 (BTG2 Antibody) at dilution 1/95, treated with fusion protein. (Original magnification: $\times 200$)