

## Product datasheet for **TA321783**

### BTG2 Rabbit Polyclonal Antibody

#### Product data:

Product Type:	Primary Antibodies
Applications:	IHC, WB
Recommended Dilution:	WB: 500-2000 WB positive control: Mouse brain tissue lysate IHC: 50-200 Positive control: Human esophagus cancer Predicted cell location: Cytoplasm
Reactivity:	Human, Mouse, Rat
Host:	Rabbit
Isotype:	IgG
Clonality:	Polyclonal
Immunogen:	Full length fusion protein
Formulation:	PBS pH7.3, 0.05% NaN <sub>3</sub> , 50% glycerol
Concentration:	lot specific
Purification:	Antigen affinity purification
Conjugation:	Unconjugated
Storage:	Store at -20°C as received.
Stability:	Stable for 12 months from date of receipt.
Predicted Protein Size:	17 kDa
Gene Name:	BTG family member 2
Database Link:	<a href="#">NP_006754</a> <a href="#">Entrez Gene 12227 Mouse</a> <a href="#">Entrez Gene 29619 Rat</a> <a href="#">Entrez Gene 7832 Human</a> <a href="#">P78543</a>



[View online »](#)

**Background:**

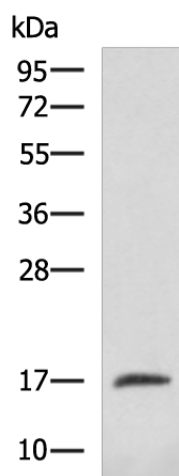
The protein encoded by this gene is a member of the BTG/Tob family. This family has structurally related proteins that appear to have antiproliferative properties. This encoded protein is involved in the regulation of the G1/S transition of the cell cycle. Protein BTG2 also known as BTG family member 2 or NGF-inducible anti-proliferative protein PC3 or NGF-inducible protein TIS21; is a protein that in humans is encoded by the BTG2 gene (B-cell translocation gene 2) and in other mammals by the homologous Btg2 gene. This protein controls cell cycle progression and proneural genes expression by acting as a transcription coregulator that enhances or inhibits the activity of transcription factors.

**Synonyms:**

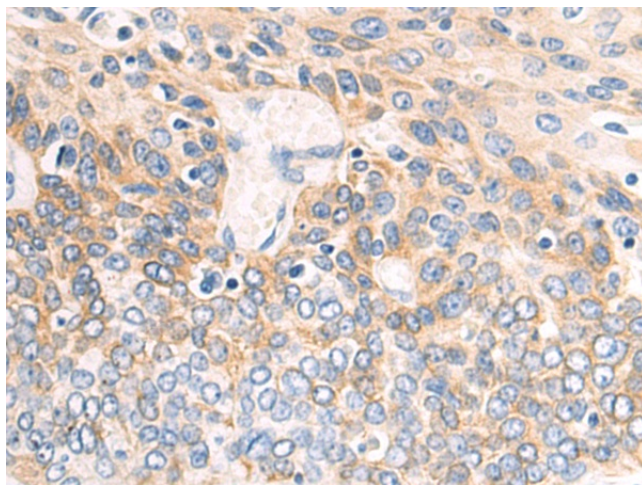
APRO1; PC3; TIS21

**Protein Families:**

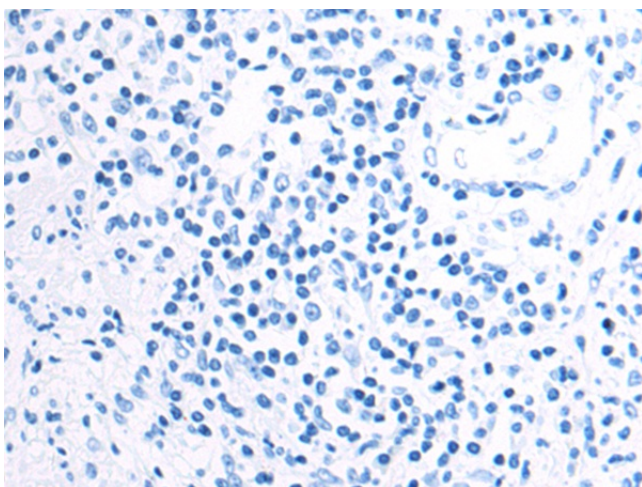
Transcription Factors

**Product images:**

Gel: 12%SDS-PAGE  
Lysate: 40 µg  
Lane: Mouse brain tissue lysate  
Primary antibody: TA321783 (BTG2 Antibody) at dilution 1/600  
Secondary antibody: Goat anti rabbit IgG at 1/5000 dilution  
Exposure time: 5 seconds



Immunohistochemistry of paraffin-embedded Human esophagus cancer tissue using TA321783 (BTG2 Antibody) at dilution 1/50 (Original magnification: ×200)



Immunohistochemistry of paraffin-embedded Human esophagus cancer tissue using TA321783 (BTG2 Antibody) at dilution 1/50, treated with fusion protein. (Original magnification: ×200)