

## Product datasheet for **TA321782S**

### 14-3-3 epsilon (YWHAE) Rabbit Polyclonal Antibody

#### Product data:

Product Type:	Primary Antibodies
Applications:	IHC, WB
Recommended Dilution:	WB: 1000-5000 WB positive control: Human brain malignant glioma and laryngocarcinoma tissue IHC: 100-300 Positive control: Human colon cancer Predicted cell location: Cytoplasm, Nucleus
Reactivity:	Human, Mouse, Rat
Host:	Rabbit
Isotype:	IgG
Clonality:	Polyclonal
Immunogen:	Synthetic peptide corresponding to a region derived from 70-84 amino acids of Human tyrosine 3-monooxygenase/tryptophan 5-monooxygenase activation protein, epsilon polypeptide
Formulation:	PBS pH7.3, 0.05% NaN <sub>3</sub> , 50% glycerol
Purification:	Antigen affinity purification
Conjugation:	Unconjugated
Storage:	Store at -20°C as received.
Stability:	Stable for 12 months from date of receipt.
Predicted Protein Size:	29 kDa
Gene Name:	tyrosine 3-monooxygenase/tryptophan 5-monooxygenase activation protein epsilon
Database Link:	<a href="#">NP_006752</a> <a href="#">Entrez Gene 22627 Mouse</a> <a href="#">Entrez Gene 29753 Rat</a> <a href="#">Entrez Gene 7531 Human</a> <a href="#">P62258</a>



[View online »](#)

**Background:**

This gene product belongs to the 14-3-3 family of proteins which mediate signal transduction by binding to phosphoserine-containing proteins. This highly conserved protein family is found in both plants and mammals; and this protein is 100% identical to the mouse ortholog. It interacts with CDC25 phosphatases; RAF1 and IRS1 proteins; suggesting its role in diverse biochemical activities related to signal transduction; such as cell division and regulation of insulin sensitivity. It has also been implicated in the pathogenesis of small cell lung cancer. Two transcript variants; one protein-coding and the other non-protein-coding; have been found for this gene.?

**Synonyms:**

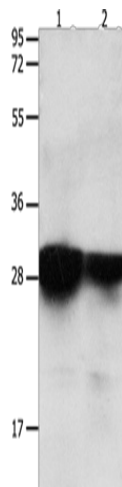
14-3-3E; HEL2; KCIP-1; MDCR; MDS

**Protein Families:**

Druggable Genome

**Protein Pathways:**

Cell cycle, Neurotrophin signaling pathway, Oocyte meiosis

**Product images:**

Gel: 12%SDS-PAGE

Lysate: 40 µg

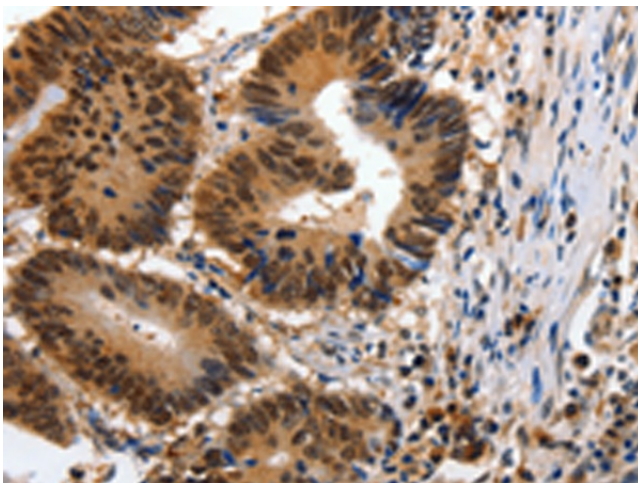
Lane 1-2: Human brain malignant glioma tissue

Human laryngocarcinoma tissue

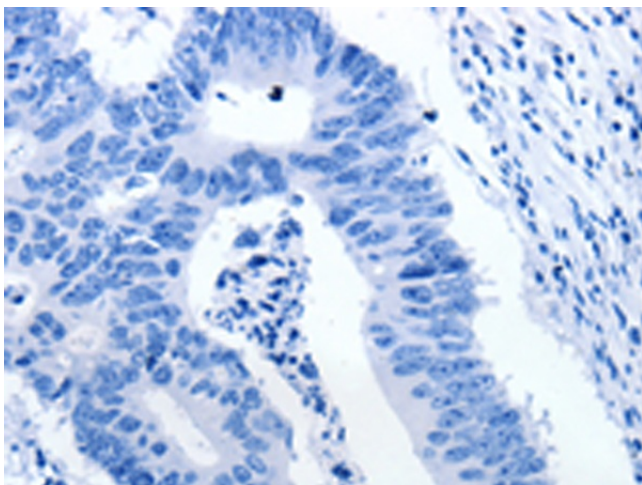
Primary antibody: [TA321782] (YWHAE Antibody)  
at dilution 1/2200

Secondary antibody: Goat anti rabbit IgG at  
1/8000 dilution

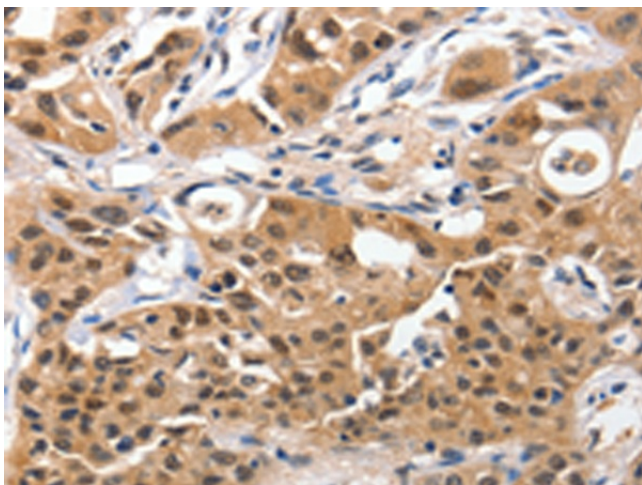
Exposure time: 30 seconds



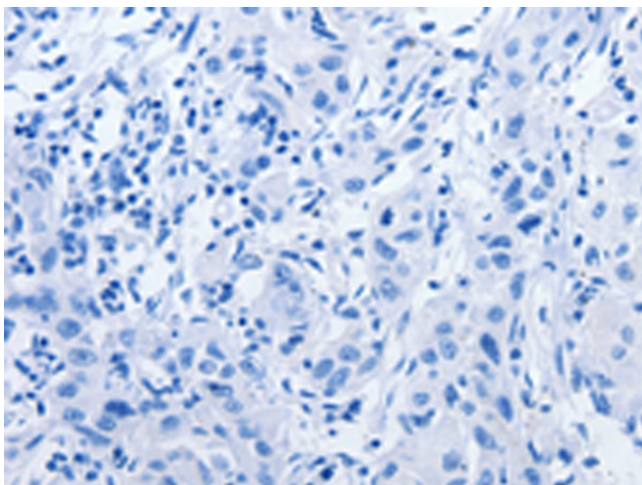
Immunohistochemistry of paraffin-embedded  
Human colon cancer tissue using [TA321782]  
(YWHAE Antibody) at dilution 1/100 (Original  
magnification: ×200)



Immunohistochemistry of paraffin-embedded Human colon cancer tissue using [TA321782] (YWHAE Antibody) at dilution 1/100, treated with synthetic peptide. (Original magnification:  $\times 200$ )



Immunohistochemistry of paraffin-embedded Human lung cancer tissue using [TA321782] (YWHAE Antibody) at dilution 1/100 (Original magnification:  $\times 200$ )



Immunohistochemistry of paraffin-embedded Human lung cancer tissue using [TA321782] (YWHAE Antibody) at dilution 1/100, treated with synthetic peptide. (Original magnification:  $\times 200$ )