

Product datasheet for **TA321779S**

14-3-3 epsilon (YWHAE) Rabbit Polyclonal Antibody

Product data:

Product Type:	Primary Antibodies
Applications:	IHC, WB
Recommended Dilution:	WB: 500-2000 WB positive control: HT-29, 293T, Hela cells and Mouse brain tissue IHC: 25-150 Positive control: Human colon cancer Predicted cell location: Cytoplasm, Nucleus
Reactivity:	Human, Mouse, Rat
Host:	Rabbit
Isotype:	IgG
Clonality:	Polyclonal
Immunogen:	Fusion protein corresponding to C terminal 254 amino acids of Human Tyrosine 3-monooxygenase/tryptophan 5-monooxygenase activation protein, epsilon polypeptide
Formulation:	PBS pH7.3, 0.05% NaN ₃ , 50% glycerol
Purification:	Antigen affinity purification
Conjugation:	Unconjugated
Storage:	Store at -20°C as received.
Stability:	Stable for 12 months from date of receipt.
Predicted Protein Size:	29 kDa
Gene Name:	tyrosine 3-monooxygenase/tryptophan 5-monooxygenase activation protein epsilon
Database Link:	NP_006752 Entrez Gene 22627 Mouse Entrez Gene 29753 Rat Entrez Gene 7531 Human P62258



[View online »](#)

Background:

This gene product belongs to the 14-3-3 family of proteins which mediate signal transduction by binding to phosphoserine-containing proteins. This highly conserved protein family is found in both plants and mammals; and this protein is 100% identical to the mouse ortholog. It interacts with CDC25 phosphatases; RAF1 and IRS1 proteins; suggesting its role in diverse biochemical activities related to signal transduction; such as cell division and regulation of insulin sensitivity. It has also been implicated in the pathogenesis of small cell lung cancer. Two transcript variants; one protein-coding and the other non-protein-coding; have been found for this gene.

Synonyms:

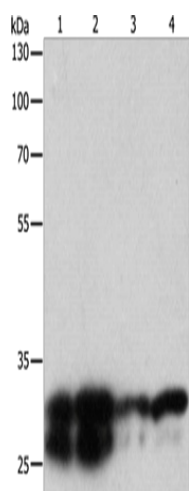
14-3-3E; HEL2; KCIP-1; MDCR; MDS

Protein Families:

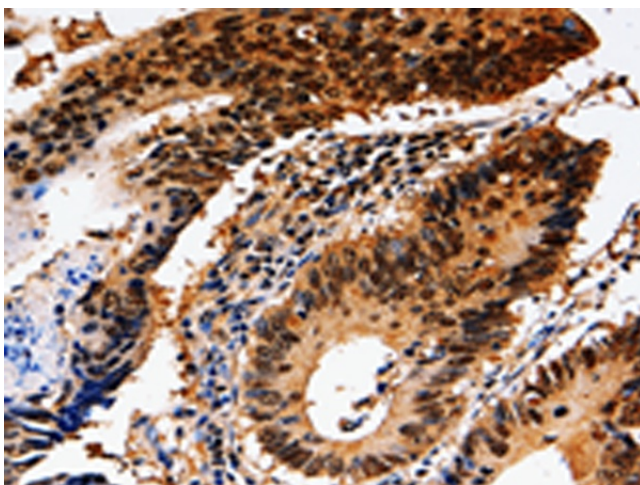
Druggable Genome

Protein Pathways:

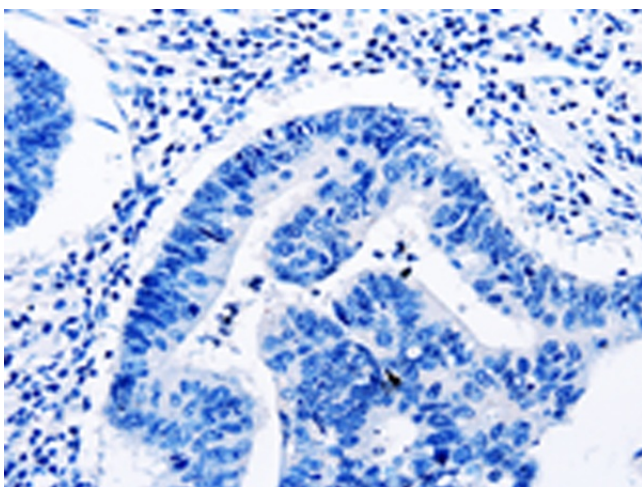
Cell cycle, Neurotrophin signaling pathway, Oocyte meiosis

Product images:

Gel: 10%SDS-PAGE
Lysate: 30 µg
Lane 1-4: HT29 cells
293T cells
HeLa cells
Mouse brain tissue
Primary antibody: [TA321779] (YWHAE Antibody)
at dilution 1/250
Secondary antibody: Goat anti rabbit IgG at
1/8000 dilution
Exposure time: 1 second



Immunohistochemistry of paraffin-embedded
Human colon cancer tissue using [TA321779]
(YWHAE Antibody) at dilution 1/10 (Original
magnification: ×200)



Immunohistochemistry of paraffin-embedded Human colon cancer tissue using [TA321779] (YWHAE Antibody) at dilution 1/10, treated with fusion protein. (Original magnification: ×200)