

## Product datasheet for **TA321777S**

### LYVE1 Rabbit Polyclonal Antibody

#### Product data:

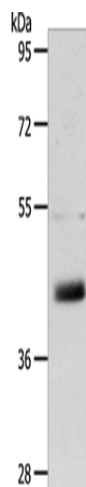
Product Type:	Primary Antibodies
Applications:	IHC, WB
Recommended Dilution:	WB: 100-500 WB positive control: A431 cells IHC: 25-100 Positive control: Human ovarian cancer Predicted cell location: Cytoplasm
Reactivity:	Human
Host:	Rabbit
Isotype:	IgG
Clonality:	Polyclonal
Immunogen:	Fusion protein corresponding to a region derived from 20-238 amino acids of human lymphatic vessel endothelial hyaluronan receptor 1
Formulation:	PBS pH7.3, 0.05% NaN <sub>3</sub> , 50% glycerol
Concentration:	lot specific
Purification:	Antigen affinity purification
Conjugation:	Unconjugated
Storage:	Store at -20°C as received.
Stability:	Stable for 12 months from date of receipt.
Predicted Protein Size:	35 kDa
Gene Name:	lymphatic vessel endothelial hyaluronan receptor 1
Database Link:	<a href="#">NP_006682</a> <a href="#">Entrez Gene 10894 Human Q9Y5Y7</a>
Background:	This gene encodes a type I integral membrane glycoprotein. The encoded protein acts as a receptor and binds to both soluble and immobilized hyaluronan. This protein may function in lymphatic hyaluronan transport and have a role in tumor metastasis.
Synonyms:	CRSBP-1; HAR; LYVE-1; XLKD1



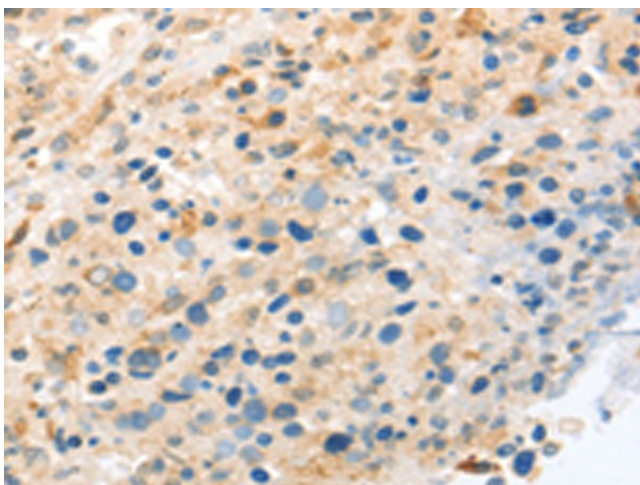
[View online »](#)

Protein Families: Druggable Genome, Transmembrane

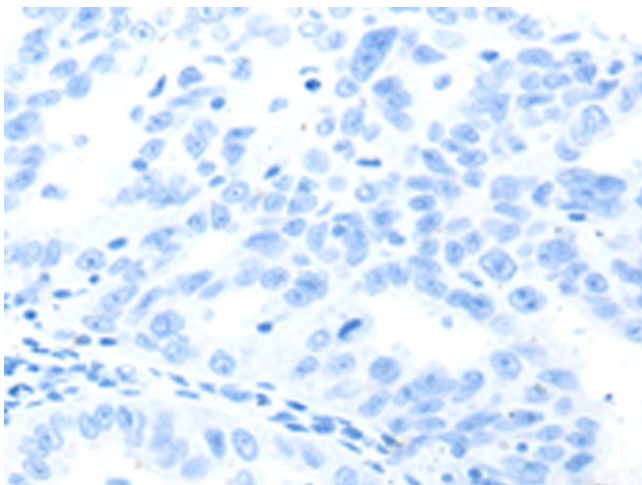
### Product images:



Gel: 10%SDS-PAGE  
Lysate: 40 µg  
Lane: A431 cells  
Primary antibody: [TA321777] (LYVE1 Antibody) at dilution 1/150  
Secondary antibody: Goat anti rabbit IgG at 1/8000 dilution  
Exposure time: 10 minutes



Immunohistochemistry of paraffin-embedded Human ovarian cancer tissue using [TA321777] (LYVE1 Antibody) at dilution 1/20 (Original magnification: ×200)



Immunohistochemistry of paraffin-embedded Human ovarian cancer tissue using [TA321777] (LYVE1 Antibody) at dilution 1/20, treated with fusion protein. (Original magnification: ×200)