

Product datasheet for **TA321775S**

Hsp105 (HSPH1) Rabbit Polyclonal Antibody

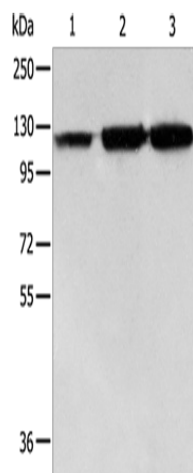
Product data:

| | |
|-------------------------|---|
| Product Type: | Primary Antibodies |
| Applications: | WB |
| Recommended Dilution: | WB: 500-2000 WB positive control: PC3 cells, human colon cancer and liver cancer tissue |
| Reactivity: | Human, Mouse, Rat |
| Host: | Rabbit |
| Isotype: | IgG |
| Clonality: | Polyclonal |
| Immunogen: | Fusion protein corresponding to C terminal 300 amino acids of human heat shock 105kDa/110kDa protein 1 |
| Formulation: | PBS pH7.3, 0.05% NaN ₃ , 50% glycerol |
| Purification: | Antigen affinity purification |
| Conjugation: | Unconjugated |
| Storage: | Store at -20°C as received. |
| Stability: | Stable for 12 months from date of receipt. |
| Predicted Protein Size: | 97 kDa |
| Gene Name: | heat shock protein family H (Hsp110) member 1 |
| Database Link: | NP_006635 Entrez Gene 15505 Mouse Entrez Gene 288444 Rat Entrez Gene 10808 Human Q92598 |
| Background: | Heat shock protein 105 kDa is a protein that in humans is encoded by the HSPH1 gene. Prevents the aggregation of denatured proteins in cells under severe stress; on which the ATP levels decrease markedly. Inhibits HSPA8/HSC70 ATPase and chaperone activities. Highly expressed in testis. Present at lower levels in most brain regions; except cerebellum. Overexpressed in cancer cells. Phosphorylation on Ser-509 may be important for regulation of the HSPA8/HSC70 chaperone activity. |
| Synonyms: | HSP105; HSP105A; HSP105B; NY-CO-25 |
| Protein Families: | Stem cell - Pluripotency |



[View online »](#)

Product images:



Gel: 8%SDS-PAGE
Lysate: 40 μ g
Lane 1-3: PC3 cells
human colon cancer tissue
Human liver cancer tissue
Primary antibody: [TA321775] (HSPH1 Antibody)
at dilution 1/500
Secondary antibody: Goat anti rabbit IgG at
1/8000 dilution
Exposure time: 40 seconds