

Product datasheet for **TA321775**

Hsp105 (HSPH1) Rabbit Polyclonal Antibody

Product data:

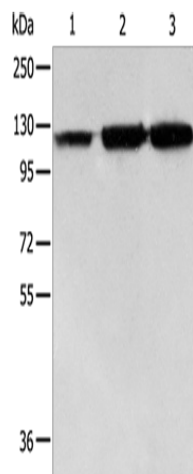
Product Type:	Primary Antibodies
Applications:	WB
Recommended Dilution:	WB: 500-2000 WB positive control: PC3 cells, human colon cancer and liver cancer tissue
Reactivity:	Human, Mouse, Rat
Host:	Rabbit
Isotype:	IgG
Clonality:	Polyclonal
Immunogen:	Fusion protein corresponding to C terminal 300 amino acids of human heat shock 105kDa/110kDa protein 1
Formulation:	PBS pH7.3, 0.05% NaN ₃ , 50% glycerol
Concentration:	lot specific
Purification:	Antigen affinity purification
Conjugation:	Unconjugated
Storage:	Store at -20°C as received.
Stability:	Stable for 12 months from date of receipt.
Predicted Protein Size:	97 kDa
Gene Name:	heat shock protein family H (Hsp110) member 1
Database Link:	NP_006635 Entrez Gene 15505 Mouse Entrez Gene 288444 Rat Entrez Gene 10808 Human Q92598
Background:	Heat shock protein 105 kDa is a protein that in humans is encoded by the HSPH1 gene. Prevents the aggregation of denatured proteins in cells under severe stress; on which the ATP levels decrease markedly. Inhibits HSPA8/HSC70 ATPase and chaperone activities. Highly expressed in testis. Present at lower levels in most brain regions; except cerebellum. Overexpressed in cancer cells. Phosphorylation on Ser-509 may be important for regulation of the HSPA8/HSC70 chaperone activity.
Synonyms:	HSP105; HSP105A; HSP105B; NY-CO-25



[View online »](#)

Protein Families: Stem cell - Pluripotency

Product images:



Gel: 8%SDS-PAGE
Lysate: 40 μ g
Lane 1-3: PC3 cells
human colon cancer tissue
Human liver cancer tissue
Primary antibody: TA321775 (HSPH1 Antibody) at
dilution 1/500
Secondary antibody: Goat anti rabbit IgG at
1/8000 dilution
Exposure time: 40 seconds