

## Product datasheet for **TA321774**

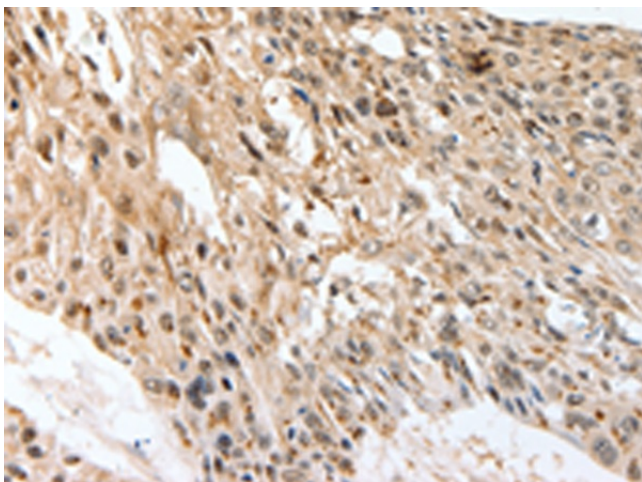
### SLC1A7 Rabbit Polyclonal Antibody

#### Product data:

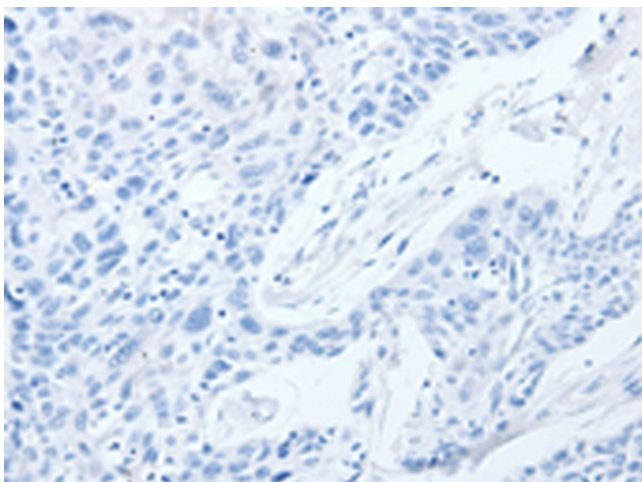
Product Type:	Primary Antibodies
Applications:	IHC
Recommended Dilution:	IHC: 50-200 Positive control: Human esophagus cancer Predicted cell location: Cytoplasm
Reactivity:	Human, Mouse
Host:	Rabbit
Isotype:	IgG
Clonality:	Polyclonal
Immunogen:	Synthetic peptide corresponding to a region derived from 120-132 amino acids of human solute carrier family 1 (glutamate transporter), member 7
Formulation:	PBS pH7.3, 0.05% NaN <sub>3</sub> , 50% glycerol
Concentration:	lot specific
Purification:	Antigen affinity purification
Conjugation:	Unconjugated
Storage:	Store at -20°C as received.
Stability:	Stable for 12 months from date of receipt.
Gene Name:	solute carrier family 1 member 7
Database Link:	<a href="#">NP_006662</a> <a href="#">Entrez Gene 242607 Mouse</a> <a href="#">Entrez Gene 6512 Human</a> <a href="#">O00341</a>
Background:	This gene belongs to the sodium:dicarboxylate (SDF) symporter (TC 2.A.23) family; SLC1A7 subfamily. As transporter of L-glutamate; the L-glutamate uptake is sodium- and voltage-dependent and chloride-independent. Its associated chloride conductance may participate in visual processing. It interacts with the PDZ domains of DLG4. Expressed primarily in retina. Detectable in liver; heart; muscle and brain.
Synonyms:	AAAT; EAAT5
Protein Families:	Transmembrane



[View online »](#)

**Product images:**

Immunohistochemistry of paraffin-embedded Human esophagus cancer tissue using TA321774 (SLC1A7 Antibody) at dilution 1/60 (Original magnification:  $\times 200$ )



Immunohistochemistry of paraffin-embedded Human esophagus cancer tissue using TA321774 (SLC1A7 Antibody) at dilution 1/60, treated with synthetic peptide. (Original magnification:  $\times 200$ )