

Product datasheet for **TA321770**

IGF2BP1 Rabbit Polyclonal Antibody

Product data:

Product Type:	Primary Antibodies
Applications:	IHC, WB
Recommended Dilution:	WB: 500-2000 WB positive control: Hela cells IHC: 50-200 Positive control: Human liver cancer Predicted cell location: Cytoplasm
Reactivity:	Human, Mouse, Rat
Host:	Rabbit
Isotype:	IgG
Clonality:	Polyclonal
Immunogen:	Synthetic peptide corresponding to a region derived from 554-568 amino acids of Human insulin-like growth factor 2 mRNA binding protein 1
Formulation:	PBS pH7.3, 0.05% NaN ₃ , 50% glycerol
Concentration:	lot specific
Purification:	Antigen affinity purification
Conjugation:	Unconjugated
Storage:	Store at -20°C as received.
Stability:	Stable for 12 months from date of receipt.
Predicted Protein Size:	63 kDa
Gene Name:	insulin like growth factor 2 mRNA binding protein 1
Database Link:	NP_006537 Entrez Gene 140486 Mouse Entrez Gene 303477 Rat Entrez Gene 10642 Human Q9NZI8



[View online »](#)

Background:

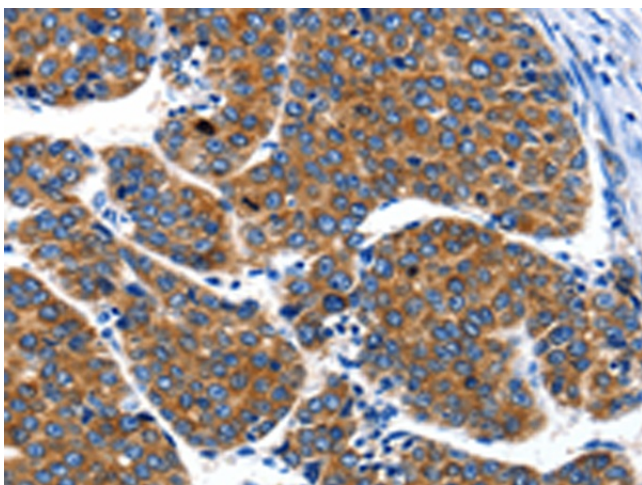
This gene encodes a member of the insulin-like growth factor 2 mRNA-binding protein family. The protein encoded by this gene contains four K homology domains and two RNA recognition motifs. It functions by binding to the mRNAs of certain genes; including insulin-like growth factor 2; beta-actin and beta-transducin repeat-containing protein; and regulating their translation. Two transcript variants encoding different isoforms have been found for this gene.

Synonyms:

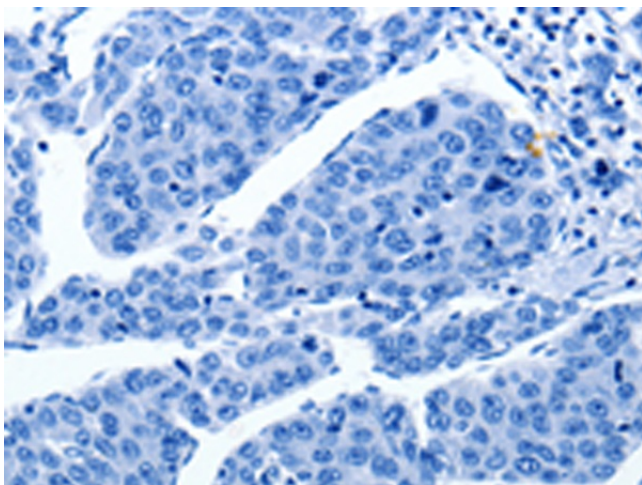
CRD-BP; CRDBP; IMP-1; IMP1; VICKZ1; ZBP1

Product images:

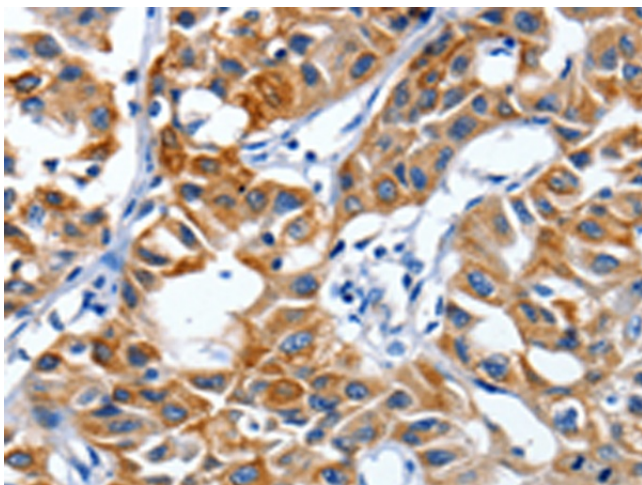
Gel: 10%SDS-PAGE
Lysate: 50 µg
Lane: HeLa cells
Primary antibody: TA321770 (IGF2BP1 Antibody) at dilution 1/750
Secondary antibody: Goat anti rabbit IgG at 1/8000 dilution
Exposure time: 1 minute



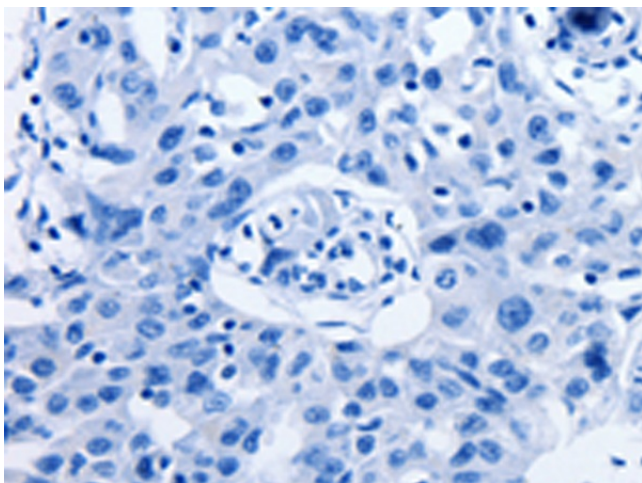
Immunohistochemistry of paraffin-embedded Human liver cancer tissue using TA321770 (IGF2BP1 Antibody) at dilution 1/40 (Original magnification: ×200)



Immunohistochemistry of paraffin-embedded Human liver cancer tissue using TA321770 (IGF2BP1 Antibody) at dilution 1/40, treated with synthetic peptide. (Original magnification: ×200)



Immunohistochemistry of paraffin-embedded Human lung cancer tissue using TA321770 (IGF2BP1 Antibody) at dilution 1/40 (Original magnification: ×200)



Immunohistochemistry of paraffin-embedded Human lung cancer tissue using TA321770 (IGF2BP1 Antibody) at dilution 1/40, treated with synthetic peptide. (Original magnification: ×200)