

Product datasheet for **TA321768S**

PTP epsilon (PTPRE) Rabbit Polyclonal Antibody

Product data:

| | |
|-----------------------|--|
| Product Type: | Primary Antibodies |
| Applications: | IHC |
| Recommended Dilution: | IHC: 15-50 Positive control: Human breast cancer Predicted cell location: Cytoplasm |
| Reactivity: | Human, Mouse, Rat |
| Host: | Rabbit |
| Isotype: | IgG |
| Clonality: | Polyclonal |
| Immunogen: | Fusion protein corresponding to a region derived from 426-689 amino acids of human protein tyrosine phosphatase, receptor type, E |
| Formulation: | PBS pH7.3, 0.05% NaN ₃ , 50% glycerol |
| Purification: | Antigen affinity purification |
| Conjugation: | Unconjugated |
| Storage: | Store at -20°C as received. |
| Stability: | Stable for 12 months from date of receipt. |
| Gene Name: | protein tyrosine phosphatase, receptor type E |
| Database Link: | NP_006495 Entrez Gene 19267 Mouse Entrez Gene 114767 Rat Entrez Gene 5791 Human P23469 |



[View online »](#)

Background:

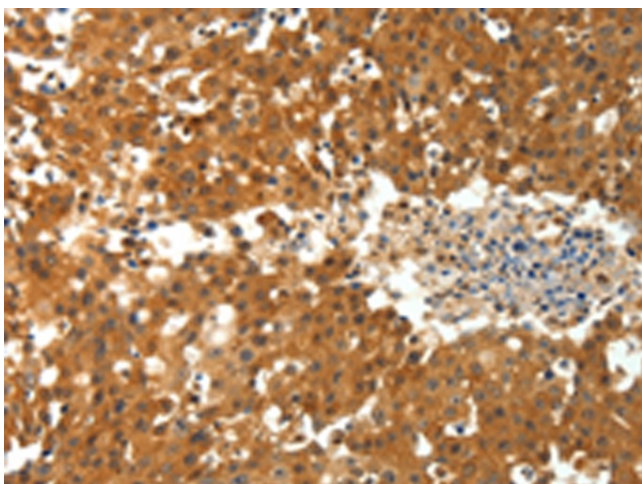
The protein encoded by this gene is a member of the protein tyrosine phosphatase (PTP) family. PTPs are known to be signaling molecules that regulate a variety of cellular processes including cell growth; differentiation; mitotic cycle; and oncogenic transformation. Two alternatively spliced transcript variants of this gene have been reported; one of which encodes a receptor-type PTP that possesses a short extracellular domain; a single transmembrane region; and two tandem intracytoplasmic catalytic domains; Another one encodes a PTP that contains a distinct hydrophilic N-terminus; and thus represents a nonreceptor-type isoform of this PTP. Studies of the similar gene in mice suggested the regulatory roles of this PTP in RAS related signal transduction pathways; cytokines induced SATA signaling; as well as the activation of voltage-gated K⁺ channels.

Synonyms:

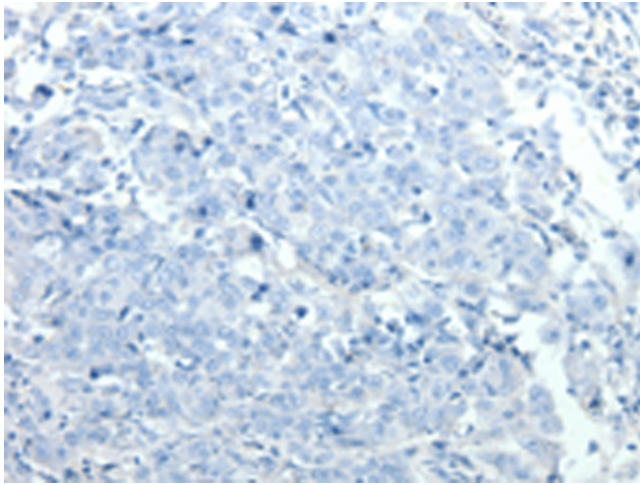
HPTPE; PTPE; R-PTP-EPSILON

Protein Families:

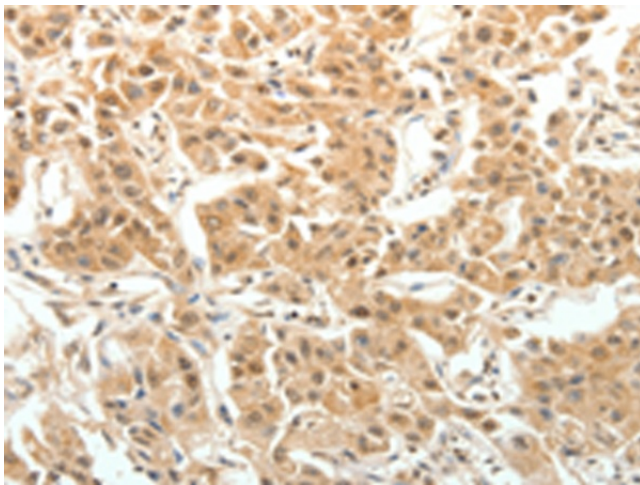
Druggable Genome, Phosphatase, Transmembrane

Product images:

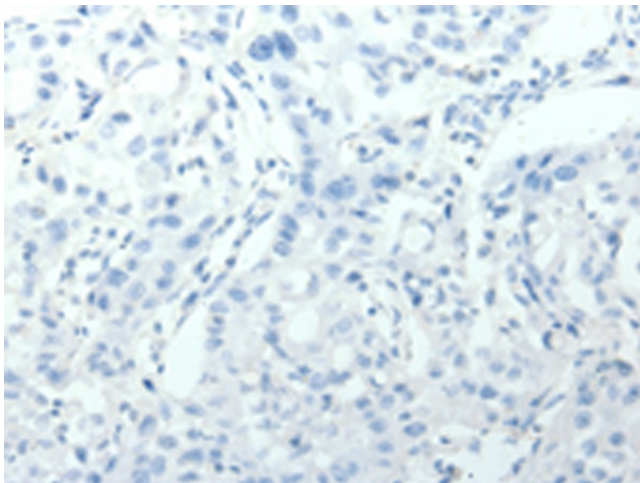
Immunohistochemistry of paraffin-embedded Human breast cancer tissue using [TA321768] (PTPRE Antibody) at dilution 1/10 (Original magnification: ×200)



Immunohistochemistry of paraffin-embedded Human breast cancer tissue using [TA321768] (PTPRE Antibody) at dilution 1/10, treated with fusion protein. (Original magnification: ×200)



Immunohistochemistry of paraffin-embedded Human lung cancer tissue using [TA321768] (PTPRE Antibody) at dilution 1/10 (Original magnification: ×200)



Immunohistochemistry of paraffin-embedded Human lung cancer tissue using [TA321768] (PTPRE Antibody) at dilution 1/10, treated with fusion protein. (Original magnification: ×200)