

## Product datasheet for **TA321766S**

### MAP126 (SPAG5) Rabbit Polyclonal Antibody

#### Product data:

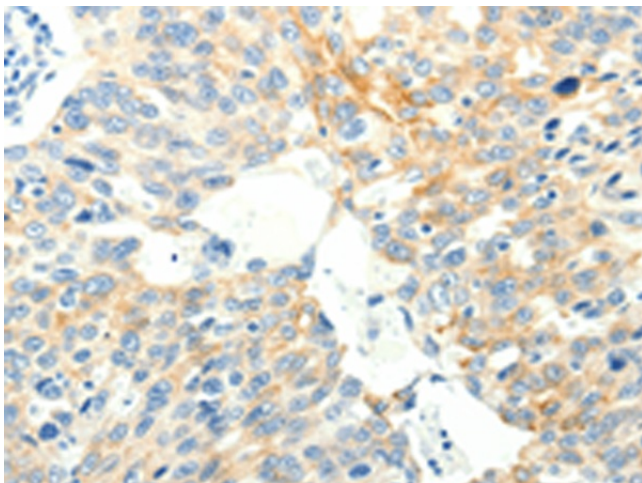
Product Type:	Primary Antibodies
Applications:	IHC
Recommended Dilution:	IHC: 25-100 Positive control: Human ovarian cancer Predicted cell location: Cytoplasm
Reactivity:	Human, Mouse
Host:	Rabbit
Isotype:	IgG
Clonality:	Polyclonal
Immunogen:	Fusion protein corresponding to a region derived from 979-1174 amino acids of human sperm associated antigen 5
Formulation:	PBS pH7.3, 0.05% NaN <sub>3</sub> , 50% glycerol
Purification:	Antigen affinity purification
Conjugation:	Unconjugated
Storage:	Store at -20°C as received.
Stability:	Stable for 12 months from date of receipt.
Gene Name:	sperm associated antigen 5
Database Link:	<a href="#">NP_006452</a> <a href="#">Entrez Gene 54141 Mouse</a> <a href="#">Entrez Gene 10615 Human</a> <a href="#">Q96R06</a>
Background:	Sperm-associated antigen 5 is a protein that in humans is encoded by the SPAG5 gene. This gene encodes a protein associated with the mitotic spindle apparatus. The encoded protein may be involved in the functional and dynamic regulation of mitotic spindles. Essential component of the mitotic spindle required for normal chromosome segregation and progression into anaphase. Required for chromosome alignment; normal timing of sister chromatid segregation; and maintenance of spindle pole architecture. The astrin (SPAG5)-kinastrin (SKAP) complex promotes stable microtubule-kinetochore attachments.
Synonyms:	DEEPEST; hMAP126; MAP126



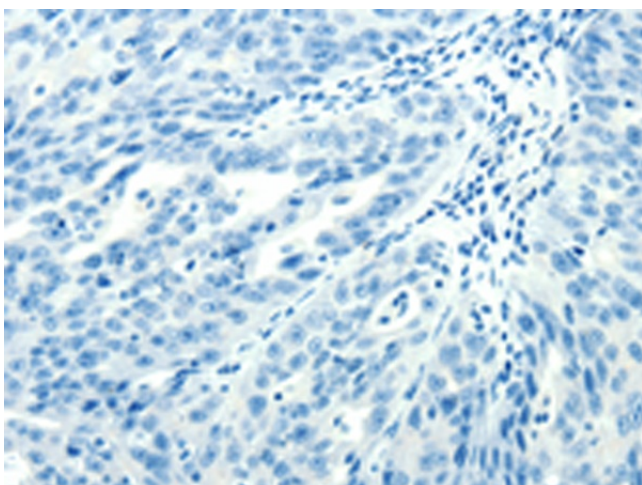
[View online »](#)

Protein Families: Druggable Genome, Stem cell - Pluripotency

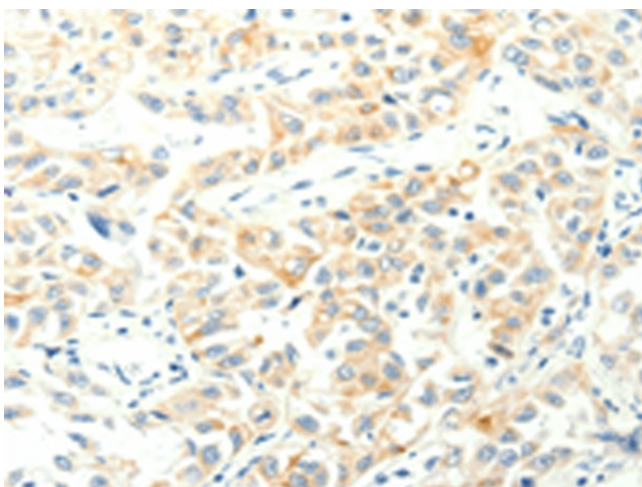
**Product images:**



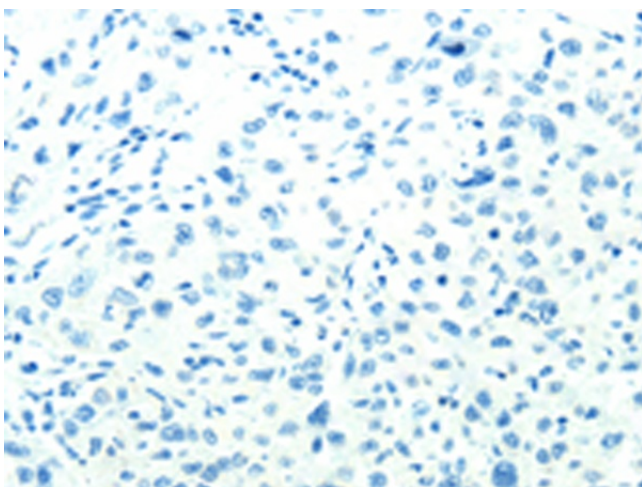
Immunohistochemistry of paraffin-embedded Human ovarian cancer tissue using [TA321766] (SPAG5 Antibody) at dilution 1/35 (Original magnification:  $\times 200$ )



Immunohistochemistry of paraffin-embedded Human ovarian cancer tissue using [TA321766] (SPAG5 Antibody) at dilution 1/35, treated with fusion protein. (Original magnification:  $\times 200$ )



Immunohistochemistry of paraffin-embedded Human lung cancer tissue using [TA321766] (SPAG5 Antibody) at dilution 1/35 (Original magnification:  $\times 200$ )



Immunohistochemistry of paraffin-embedded Human lung cancer tissue using [TA321766] (SPAG5 Antibody) at dilution 1/35, treated with fusion protein. (Original magnification:  $\times 200$ )