

Product datasheet for **TA321762**

C13orf24 (PIBF1) Rabbit Polyclonal Antibody

Product data:

Product Type:	Primary Antibodies
Applications:	IHC, WB
Recommended Dilution:	WB: 200-1000 WB positive control: Hela and 293T cells IHC: 25-100 Positive control: Human colon cancer Predicted cell location: Cytoplasm
Reactivity:	Human
Host:	Rabbit
Isotype:	IgG
Clonality:	Polyclonal
Immunogen:	Synthetic peptide peptide corresponding to a region derived from 745-757 amino acids of human progesterone immunomodulatory binding factor 1
Formulation:	PBS pH7.3, 0.05% NaN ₃ , 50% glycerol
Concentration:	lot specific
Purification:	Antigen affinity purification
Conjugation:	Unconjugated
Storage:	Store at -20°C as received.
Stability:	Stable for 12 months from date of receipt.
Predicted Protein Size:	90 kDa
Gene Name:	progesterone immunomodulatory binding factor 1
Database Link:	NP_006337 Entrez Gene 10464 Human Q8WXW3



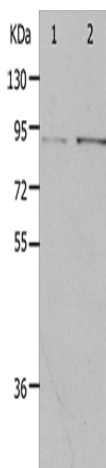
[View online »](#)

Background:

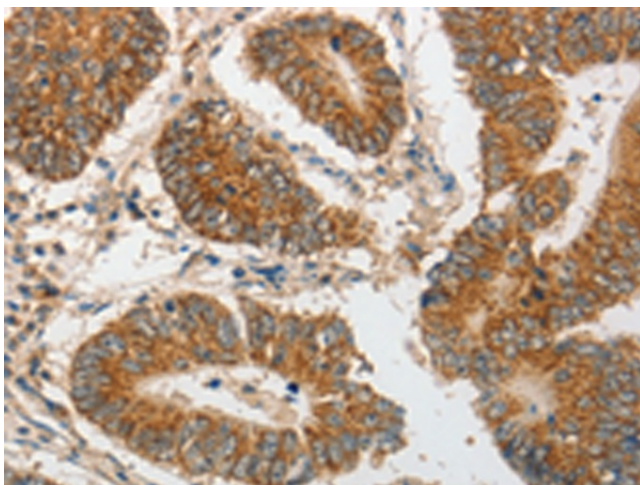
Progesterone-induced-blocking factor 1 is a protein that in humans is encoded by the PIBF1 gene. It has been shown to localize to the centrosome and has also been named CEP90. Mediator of progesterone that by acting on the phospholipase A2 enzyme interferes with arachidonic acid metabolism; induces a Th2 biased immune response; and by controlling NK activity exerts an anti-abortive effect.

Synonyms:

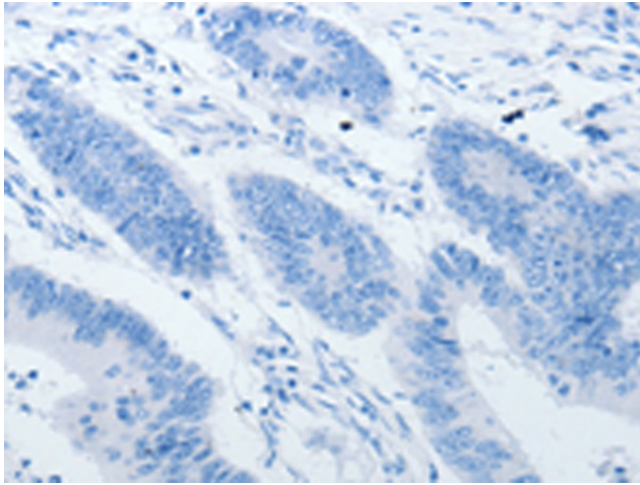
C13orf24; CEP90; PIBF

Product images:


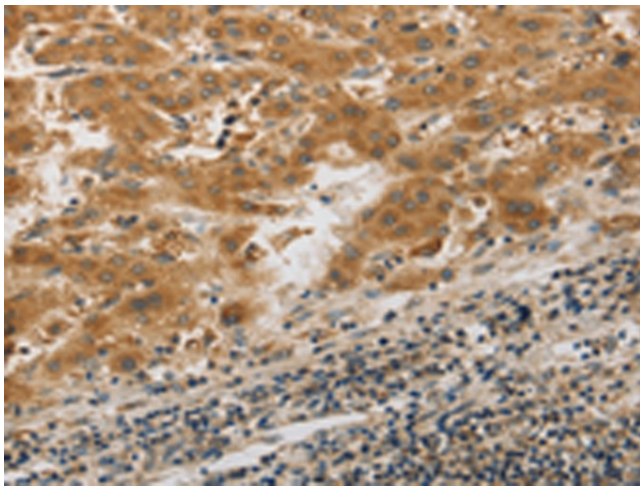
Gel: 10%SDS-PAGE
 Lysate: 40 µg
 Lane 1-2: HeLa cells
 293T cells
 Primary antibody: TA321762 (PIBF1 Antibody) at dilution 1/400
 Secondary antibody: Goat anti rabbit IgG at 1/8000 dilution
 Exposure time: 2 minutes



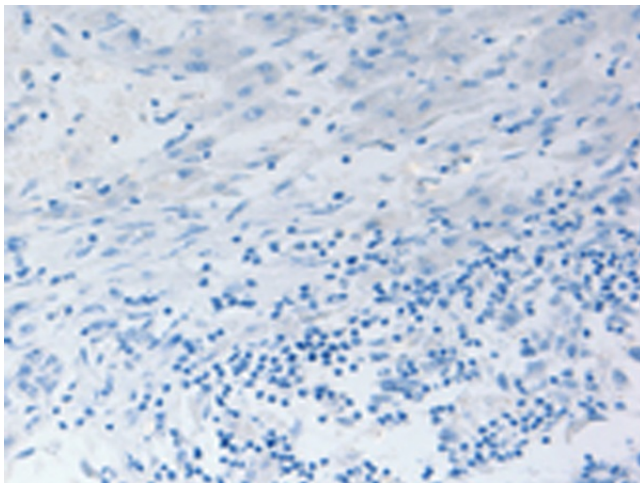
Immunohistochemistry of paraffin-embedded Human colon cancer tissue using TA321762 (PIBF1 Antibody) at dilution 1/20 (Original magnification: ×200)



Immunohistochemistry of paraffin-embedded Human colon cancer tissue using TA321762 (PIBF1 Antibody) at dilution 1/20, treated with synthetic peptide. (Original magnification: ×200)



Immunohistochemistry of paraffin-embedded Human liver cancer tissue using TA321762 (PIBF1 Antibody) at dilution 1/20 (Original magnification: ×200)



Immunohistochemistry of paraffin-embedded Human liver cancer tissue using TA321762 (PIBF1 Antibody) at dilution 1/20, treated with synthetic peptide. (Original magnification: ×200)