

## Product datasheet for **TA321758**

### **S100A1 Rabbit Polyclonal Antibody**

#### **Product data:**

Product Type:	Primary Antibodies
Applications:	IHC
Recommended Dilution:	IHC: 50-200 Positive control: Human thyroid cancer Predicted cell location: Cytoplasm, Nucleus
Reactivity:	Human, Mouse, Rat
Host:	Rabbit
Isotype:	IgG
Clonality:	Polyclonal
Immunogen:	Synthetic peptide corresponding to a region derived from 81-94 amino acids of Human S100 calcium binding protein A1
Formulation:	PBS pH7.3, 0.05% NaN <sub>3</sub> , 50% glycerol
Concentration:	lot specific
Purification:	Antigen affinity purification
Conjugation:	Unconjugated
Storage:	Store at -20°C as received.
Stability:	Stable for 12 months from date of receipt.
Gene Name:	S100 calcium binding protein A1
Database Link:	<a href="#">NP_006262</a> <a href="#">Entrez Gene 20193 Mouse</a> <a href="#">Entrez Gene 295214 Rat</a> <a href="#">Entrez Gene 6271 Human</a> <a href="#">P23297</a>



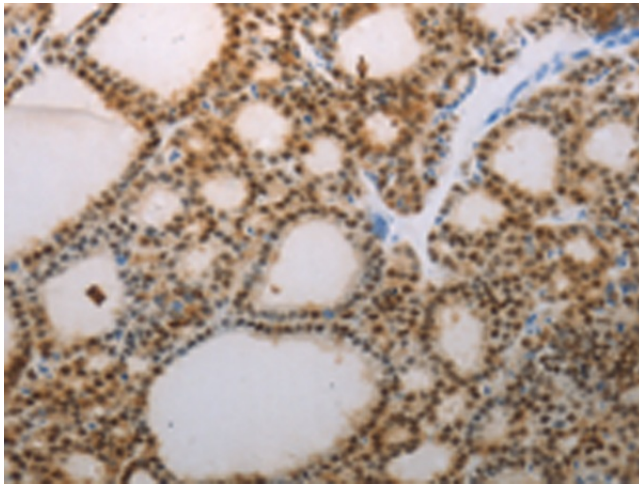
[View online »](#)

**Background:**

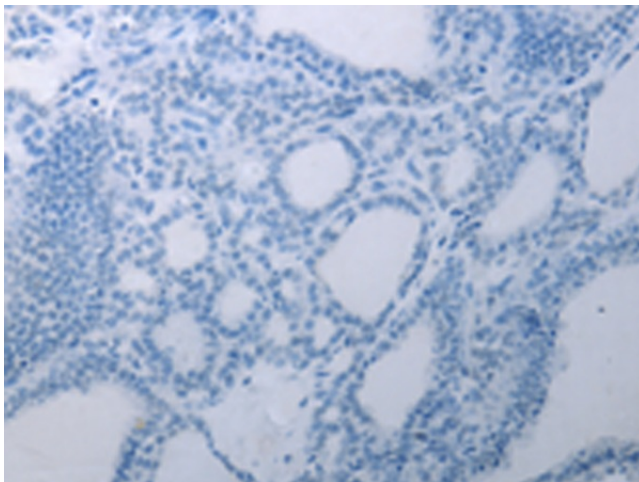
The protein encoded by this gene is a member of the S100 family of proteins containing 2 EF-hand calcium-binding motifs. S100 proteins are localized in the cytoplasm and/or nucleus of a wide range of cells; and involved in the regulation of a number of cellular processes such as cell cycle progression and differentiation. S100 genes include at least 13 members which are located as a cluster on chromosome 1q21. This protein may function in stimulation of Ca<sup>2+</sup>-induced Ca<sup>2+</sup> release; inhibition of microtubule assembly; and inhibition of protein kinase C-mediated phosphorylation. Reduced expression of this protein has been implicated in cardiomyopathies.

**Synonyms:**

S100; S100-alpha; S100A

**Product images:**

Immunohistochemistry of paraffin-embedded Human thyroid cancer tissue using TA321758 (S100A1 Antibody) at dilution 1/70 (Original magnification: ×200)



Immunohistochemistry of paraffin-embedded Human thyroid cancer tissue using TA321758 (S100A1 Antibody) at dilution 1/70, treated with synthetic peptide. (Original magnification: ×200)