

## Product datasheet for **TA321756**

### CD90 (THY1) Rabbit Polyclonal Antibody

#### Product data:

Product Type:	Primary Antibodies
Applications:	WB
Recommended Dilution:	WB: 1:500-2000
Reactivity:	Human, Mouse, Rat
Host:	Rabbit
Isotype:	IgG
Clonality:	Polyclonal
Immunogen:	Synthetic peptide corresponding to a region derived from 51-65 amino acids of human Thy-1 cell surface antigen
Formulation:	PBS pH7.3, 0.05% NaN <sub>3</sub> , 50% glycerol
Concentration:	lot specific
Purification:	Antigen affinity purification
Conjugation:	Unconjugated
Storage:	Store at -20°C as received.
Stability:	Stable for 12 months from date of receipt.
Predicted Protein Size:	18 kDa
Gene Name:	Thy-1 cell surface antigen
Database Link:	<a href="#">NP_006279</a> <a href="#">Entrez Gene 21838 Mouse</a> <a href="#">Entrez Gene 24832 Rat</a> <a href="#">Entrez Gene 7070 Human</a> <a href="#">P04216</a>



[View online »](#)

**Background:**

Thy1 is a GPI-anchored, developmentally regulated protein involved in various signaling cascades that mediate neurite outgrowth, T cell activation, tumor suppression, apoptosis, and fibrosis. It is highly expressed on the surface of adult neurons and is thought to play a role in modulating adhesive and migratory events, such as neurite extension. Decreased Thy1 expression is associated with the development of epithelial ovarian cancer, revealing its role as a putative tumor suppressor gene of human ovarian cancer. Thy1 knockout mice have impaired cutaneous immune responses and abnormal retinal development. Thy1 is epigenetically regulated, or deregulated in some disease states, such as pulmonary fibrosis. The potentially reversible hypermethylation of the Thy1 promoter offers the possibility of novel therapeutic options in this disease).

**Synonyms:**

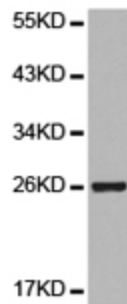
CD90; CDw90

**Protein Families:**

ES Cell Differentiation/IPS

**Protein Pathways:**

Leukocyte transendothelial migration

**Product images:**

Predicted band size: 18 kDa. Positive control: Human fetal brain tissue lysate. Recommended dilution: 1/500-2000. (Gel: 12%SDS-PAGE Lysate: 40 ug Primary antibody: 1/500 dilution Secondary antibody: Goat anti Rabbit IgG - H&L (HRP) at 1/10000 dilution Exposure time: 1 minute)