

Product datasheet for **TA321753**

PIN1 Rabbit Polyclonal Antibody

Product data:

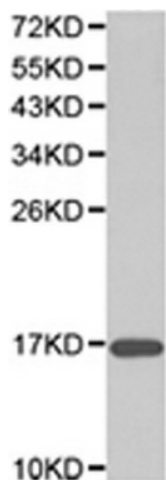
Product Type:	Primary Antibodies
Applications:	WB
Recommended Dilution:	WB: 1:500-2000
Reactivity:	Human, Mouse, Rat
Host:	Rabbit
Isotype:	IgG
Clonality:	Polyclonal
Immunogen:	Full length fusion protein
Formulation:	PBS pH7.3, 0.05% NaN ₃ , 50% glycerol
Concentration:	lot specific
Purification:	Antigen affinity purification
Conjugation:	Unconjugated
Storage:	Store at -20°C as received.
Stability:	Stable for 12 months from date of receipt.
Predicted Protein Size:	18 kDa
Gene Name:	peptidylprolyl cis/trans isomerase, NIMA-interacting 1
Database Link:	NP_006212 Entrez Gene 23988 MouseEntrez Gene 298696 RatEntrez Gene 5300 Human Q13526
Background:	Pin1, a member of the parvulin family of peptidyl-prolyl isomerases (PPIase), has been implicated in the G2/M transition of the mammalian cell cycle. Pin1 is a small (18 kDa) protein with two distinct functional domains: an amino-terminal WW domain and a carboxy-terminal PPIase domain. Pin1 interacts with several mitotic phosphoproteins, including Plk1, cdc25C and cdc27, and is thought to act as a phosphorylation-dependent PPIase for these target molecules.
Synonyms:	DOD; UBL5
Protein Families:	Druggable Genome



[View online »](#)

Protein Pathways: RIG-I-like receptor signaling pathway

Product images:



Predicted band size: 18 kDa. Positive control: 293T cell lysate. Recommended dilution: 1/500-2000. (Gel: 12%SDS-PAGE Lysate: 40 ug Primary antibody: 1/500 dilution Secondary antibody: Goat anti Rabbit IgG - H&L (HRP) at 1/10000 dilution Exposure time: 1 minute)