

## Product datasheet for **TA321752S**

### **PAX1 Rabbit Polyclonal Antibody**

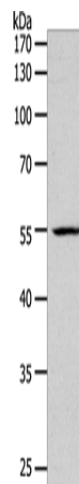
#### **Product data:**

Product Type:	Primary Antibodies
Applications:	WB
Recommended Dilution:	WB: 500-2000 WB positive control: K562 cells
Reactivity:	Human, Mouse
Host:	Rabbit
Isotype:	IgG
Clonality:	Polyclonal
Immunogen:	Synthetic peptide corresponding to a region derived from 5-19 amino acids of Human paired box 1
Formulation:	PBS pH7.3, 0.05% NaN <sub>3</sub> , 50% glycerol
Purification:	Antigen affinity purification
Conjugation:	Unconjugated
Storage:	Store at -20°C as received.
Stability:	Stable for 12 months from date of receipt.
Predicted Protein Size:	55 kDa
Gene Name:	paired box 1
Database Link:	<a href="#">NP_006183</a> <a href="#">Entrez Gene 18503 Mouse</a> <a href="#">Entrez Gene 5075 Human</a> <a href="#">P15863</a>
Background:	This gene is a member of the paired box (PAX) family of transcription factors. Members of the PAX family typically contain a paired box domain and a paired-type homeodomain. These genes play critical roles during fetal development. This gene plays a role in pattern formation during embryogenesis and may be essential for development of the vertebral column. This gene is silenced by methylation in ovarian and cervical cancers and may be a tumor suppressor gene. Mutations in this gene are also associated with vertebral malformations
Synonyms:	HUP48; OFC2



[View online »](#)

## Product images:



Gel: 10%SDS-PAGE

Lysate: 40  $\mu$ g

Lane: K562 cells

Primary antibody: [TA321752] (PAX1 Antibody) at dilution 1/1200

Secondary antibody: Goat anti rabbit IgG at 1/8000 dilution

Exposure time: 2 minutes