

Product datasheet for **TA321749S**

Neurogenin 1 (NEUROG1) Rabbit Polyclonal Antibody

Product data:

Product Type:	Primary Antibodies
Applications:	IHC, WB
Recommended Dilution:	WB: 500-2000 WB positive control: Hela, A375, HepG2, Mouse testis tissue, 293T cell lysates IHC: 50-200 Positive control: Human tonsil Predicted cell location: Nucleus
Reactivity:	Human, Mouse
Host:	Rabbit
Isotype:	IgG
Clonality:	Polyclonal
Immunogen:	Synthetic peptide corresponding to a region derived from 26-39 amino acids of Human neurogenin 1
Formulation:	PBS pH7.3, 0.05% NaN ₃ , 50% glycerol
Purification:	Antigen affinity purification
Conjugation:	Unconjugated
Storage:	Store at -20°C as received.
Stability:	Stable for 12 months from date of receipt.
Predicted Protein Size:	26 kDa
Gene Name:	neurogenin 1
Database Link:	NP_006152 Entrez Gene 18014 Mouse Entrez Gene 4762 Human Q92886



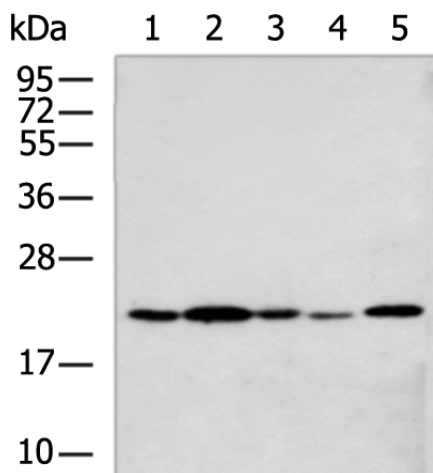
[View online »](#)

Background: Neurogenin-1 is a protein that in humans is encoded by the NEUROG1 gene. Acts as a transcriptional regulator. Involved in the initiation of neuronal differentiation. Activates transcription by binding to the E box (5'-CANNTG-3'). Associates with chromatin to enhance regulatory elements in genes encoding key transcriptional regulators of neurogenesis. NEUROG1 has been shown to interact with CREB-binding protein and decapentaplegic homolog 1.

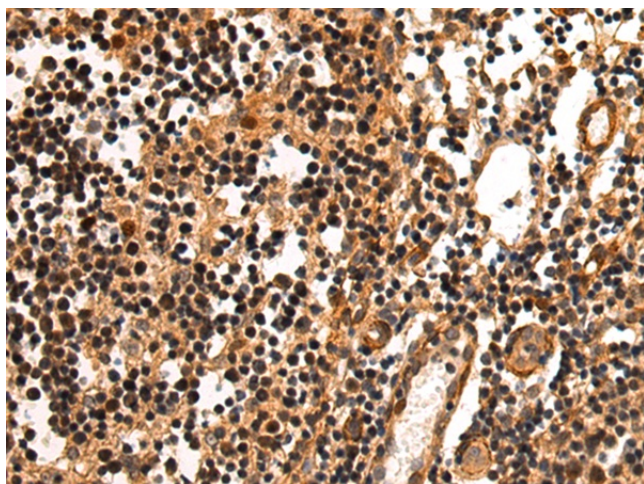
Synonyms: AKA; bHLHa6; Math4C; NEUROD3; ngn1

Protein Families: Druggable Genome, ES Cell Differentiation/IPS, Transcription Factors

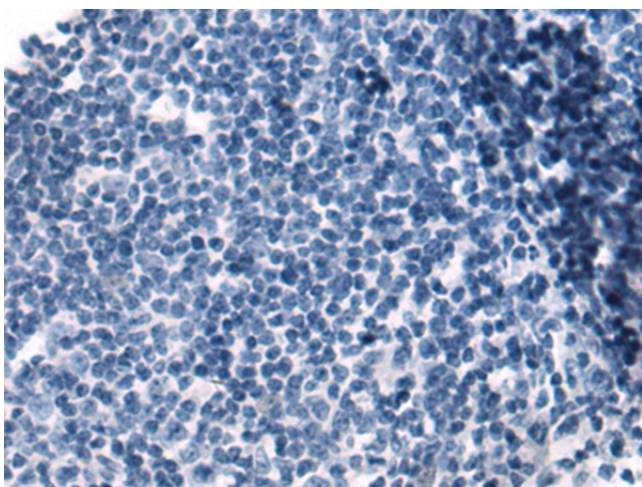
Product images:



Gel: 10%SDS-PAGE
 Lysate: 40 µg
 Lane 1-5: HeLa A375
 HepG2
 Mouse testis tissue
 293T cell lysates
 Primary antibody: [TA321749] (NEUROG1 Antibody) at dilution 1/250
 Secondary antibody: Goat anti rabbit IgG at 1/5000 dilution
 Exposure time: 1 minute



Immunohistochemistry of paraffin-embedded Human tonsil tissue using [TA321749] (NEUROG1 Antibody) at dilution 1/50 (Original magnification: ×200)



Immunohistochemistry of paraffin-embedded Human tonsil tissue using [TA321749] (NEUROG1 Antibody) at dilution 1/50, treated with synthetic peptide. (Original magnification: $\times 200$)