

## Product datasheet for **TA321745**

### ACAA2 Rabbit Polyclonal Antibody

#### Product data:

Product Type:	Primary Antibodies
Applications:	IHC, WB
Recommended Dilution:	WB: 200-1000 WB positive control: Hela, A549, NIH/3T3 and A172 cells, human liver cancer tissue IHC: 25-100 Positive control: Human thyroid cancer Predicted cell location: Cytoplasm
Reactivity:	Human, Mouse, Rat
Host:	Rabbit
Isotype:	IgG
Clonality:	Polyclonal
Immunogen:	Fusion protein corresponding to C terminal 250 amino acids of human acetyl-CoA acyltransferase 2
Formulation:	PBS pH7.3, 0.05% NaN <sub>3</sub> , 50% glycerol
Concentration:	lot specific
Purification:	Antigen affinity purification
Conjugation:	Unconjugated
Storage:	Store at -20°C as received.
Stability:	Stable for 12 months from date of receipt.
Predicted Protein Size:	42 kDa
Gene Name:	acetyl-CoA acyltransferase 2
Database Link:	<a href="#">NP_006102</a> <a href="#">Entrez Gene 52538 Mouse</a> <a href="#">Entrez Gene 170465 Rat</a> <a href="#">Entrez Gene 10449 Human</a> <a href="#">P42765</a>



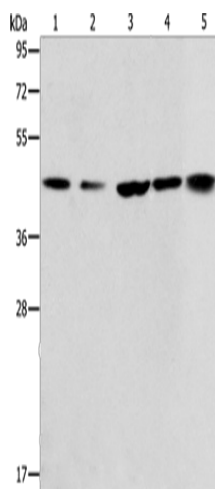
[View online »](#)

**Background:** 3-Ketoacyl-CoA thiolase, mitochondrial also known as acetyl-Coenzyme A acyltransferase 2 is an enzyme that in humans is encoded by the ACAA2 gene. Acetyl-Coenzyme A acyltransferase 2 is an acetyl-CoA C-acyltransferase enzyme. The encoded protein catalyzes the last step of the mitochondrial fatty acid beta-oxidation spiral. Unlike most mitochondrial matrix proteins, it contains a non-cleavable amino-terminal targeting signal.

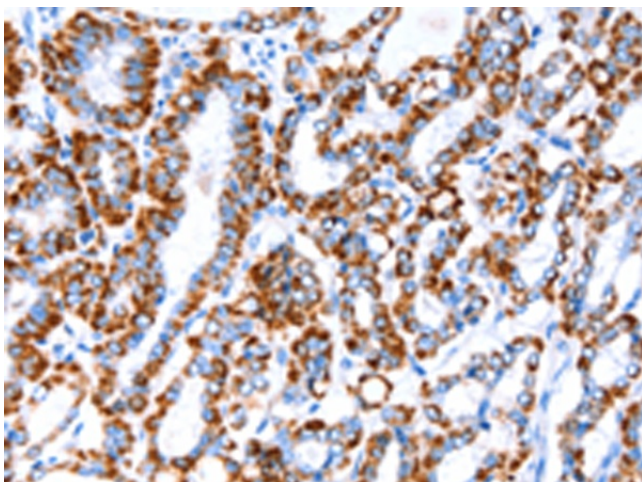
**Synonyms:** DSAEC

**Protein Pathways:** Fatty acid elongation in mitochondria, Fatty acid metabolism, Metabolic pathways, Valine, leucine and isoleucine degradation

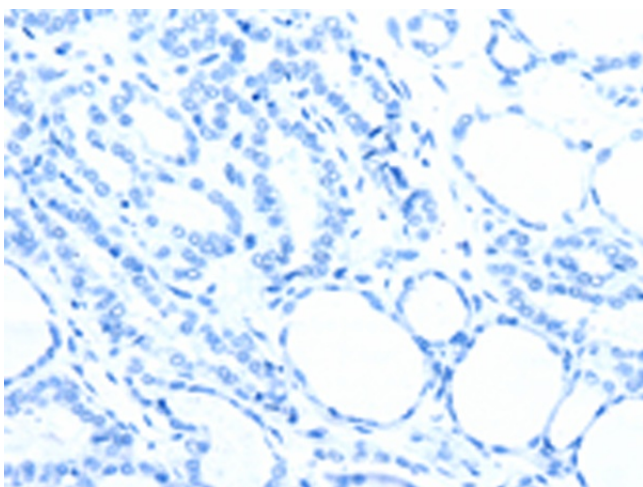
**Product images:**



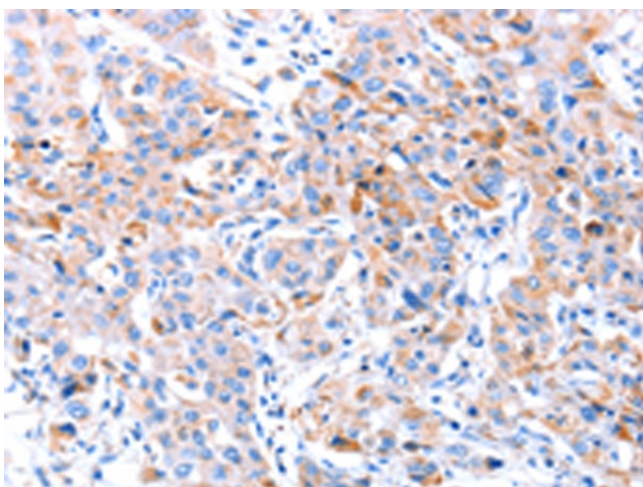
Gel: 10%SDS-PAGE  
Lysate: 40  $\mu$ g  
Lane 1-5: HeLa cells  
A549 cells  
NIH/3T3 cells  
A172 cells  
human liver cancer tissue  
Primary antibody: TA321745 (ACAA2 Antibody) at dilution 1/225  
Secondary antibody: Goat anti rabbit IgG at 1/8000 dilution  
Exposure time: 20 seconds



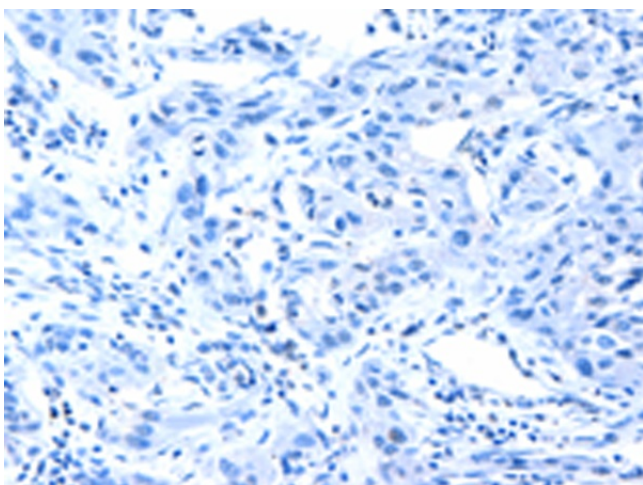
Immunohistochemistry of paraffin-embedded Human thyroid cancer tissue using TA321745 (ACAA2 Antibody) at dilution 1/20 (Original magnification:  $\times 200$ )



Immunohistochemistry of paraffin-embedded Human thyroid cancer tissue using TA321745 (ACAA2 Antibody) at dilution 1/20, treated with fusion protein. (Original magnification: ×200)



Immunohistochemistry of paraffin-embedded Human lung cancer tissue using TA321745 (ACAA2 Antibody) at dilution 1/20 (Original magnification: ×200)



Immunohistochemistry of paraffin-embedded Human lung cancer tissue using TA321745 (ACAA2 Antibody) at dilution 1/20, treated with fusion protein. (Original magnification: ×200)