

## Product datasheet for **TA321743**

### Tubulin (TUBA1B) Rabbit Polyclonal Antibody

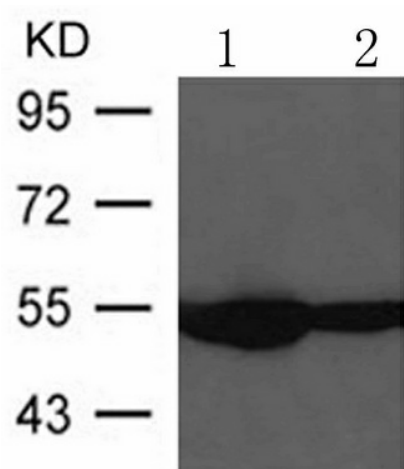
#### Product data:

Product Type:	Primary Antibodies
Applications:	WB
Recommended Dilution:	WB: 1:500-1000
Reactivity:	Human, Mouse, Rat
Host:	Rabbit
Isotype:	IgG
Clonality:	Polyclonal
Immunogen:	Peptide sequence around aa.437-441( V-D-S-V-E) derived from Human alpha-Tubulin.
Formulation:	PBS pH7.3, 0.05% NaN <sub>3</sub> , 50% glycerol
Concentration:	lot specific
Purification:	Antigen affinity purification
Conjugation:	Unconjugated
Storage:	Store at -20°C as received.
Stability:	Stable for 12 months from date of receipt.
Predicted Protein Size:	50 kDa
Gene Name:	tubulin alpha 1b
Database Link:	<a href="#">NP_006073</a> <a href="#">Entrez Gene 22143 MouseEntrez Gene 500929 RatEntrez Gene 10376 Human P68363</a>
Background:	Tubulin is the major constituent of microtubules. It binds two moles of GTP, one at an exchangeable site on the beta chain and one at a non-exchangeable site on the alpha-chain.
Synonyms:	K-ALPHA-1
Protein Families:	Druggable Genome
Protein Pathways:	Gap junction, Pathogenic Escherichia coli infection



[View online »](#)

## Product images:



Predicted band size: 50 kDa. Positive control: HeLa and HT29 cell lysate. Recommended dilution: 1/500-1000. (Gel: 10%SDS-PAGE Lane 1, 2: HeLa and HT29 cells lysate Lysates: 30 ug per lane Primary antibody: 1/500 dilution Secondary antibody: Goat anti Rabbit IgG - H&L (HRP) at 1/10000 dilution Exposure time: 1 minute)