

Product datasheet for **TA321741S**

Eotaxin 3 (CCL26) Rabbit Polyclonal Antibody

Product data:

Product Type:	Primary Antibodies
Applications:	IHC
Recommended Dilution:	IHC: 20-100 Positive control: Human thyroid cancer Predicted cell location: Cytoplasm
Reactivity:	Human
Host:	Rabbit
Isotype:	IgG
Clonality:	Polyclonal
Immunogen:	Synthetic peptide corresponding to a region derived from 57-71 amino acids of Human chemokine (C-C motif) ligand 26
Formulation:	PBS pH7.3, 0.05% NaN ₃ , 50% glycerol
Purification:	Antigen affinity purification
Conjugation:	Unconjugated
Storage:	Store at -20°C as received.
Stability:	Stable for 12 months from date of receipt.
Gene Name:	C-C motif chemokine ligand 26
Database Link:	NP_006063 Entrez Gene 10344 Human Q9Y258
Background:	This gene is one of two Cys-Cys (CC) cytokine genes clustered on the q arm of chromosome 7. Cytokines are a family of secreted proteins involved in immunoregulatory and inflammatory processes. The CC cytokines are proteins characterized by two adjacent cysteines. The cytokine encoded by this gene displays chemotactic activity for normal peripheral blood eosinophils and basophils. The product of this gene is one of three related chemokines that specifically activate chemokine receptor CCR3. This chemokine may contribute to the eosinophil accumulation in atopic diseases.
Synonyms:	IMAC; MIP-4a; MIP-4alpha; SCYA26; TSC-1

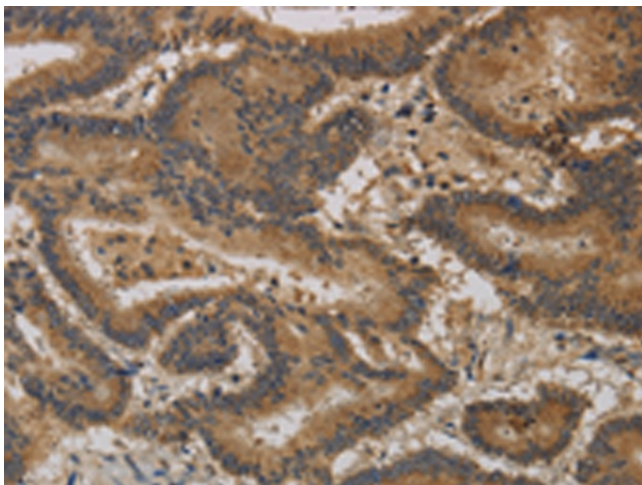


[View online »](#)

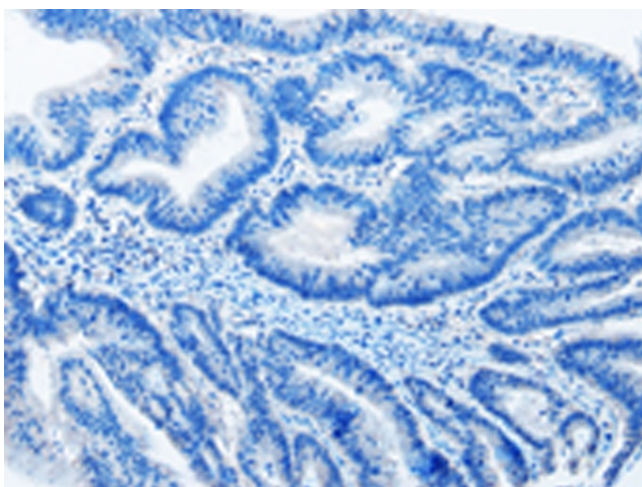
Protein Families: Druggable Genome, Secreted Protein

Protein Pathways: Chemokine signaling pathway, Cytokine-cytokine receptor interaction

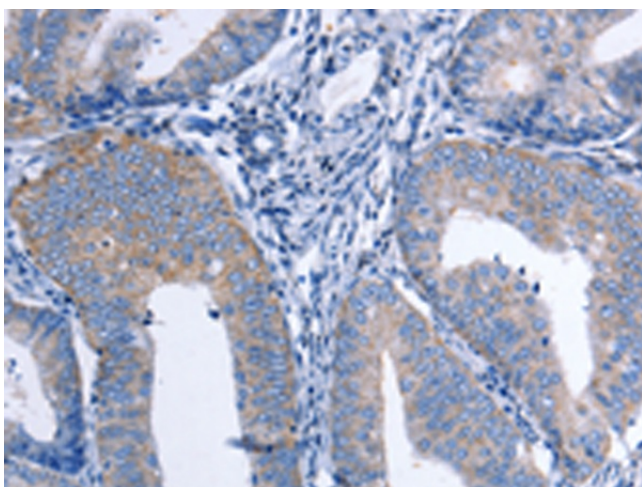
Product images:



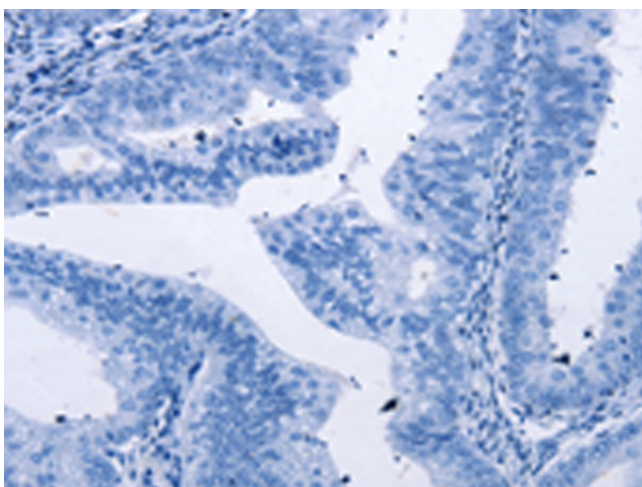
Immunohistochemistry of paraffin-embedded Human thyroid cancer tissue using [TA321741] (CCL26 Antibody) at dilution 1/20 (Original magnification: $\times 200$)



Immunohistochemistry of paraffin-embedded Human thyroid cancer tissue using [TA321741] (CCL26 Antibody) at dilution 1/20, treated with synthetic peptide. (Original magnification: $\times 200$)



Immunohistochemistry of paraffin-embedded Human cervical cancer tissue using [TA321741] (CCL26 Antibody) at dilution 1/20 (Original magnification: $\times 200$)



Immunohistochemistry of paraffin-embedded Human cervical cancer tissue using [TA321741] (CCL26 Antibody) at dilution 1/20, treated with synthetic peptide. (Original magnification: $\times 200$)