

## Product datasheet for **TA321738**

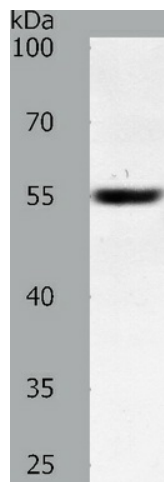
### SOX1 Rabbit Polyclonal Antibody

#### Product data:

Product Type:	Primary Antibodies
Applications:	WB
Recommended Dilution:	ELISA: 1:1000-5000, WB: 1:200-1000
Reactivity:	Human, Mouse, Rat
Host:	Rabbit
Isotype:	IgG
Clonality:	Polyclonal
Immunogen:	Synthetic peptide corresponding to a region derived from 378-391 amino acids of human SRY (sex determining region Y)-box 1
Formulation:	PBS pH7.3, 0.05% NaN <sub>3</sub> , 50% glycerol
Concentration:	lot specific
Purification:	Antigen affinity purification
Conjugation:	Unconjugated
Storage:	Store at -20°C as received.
Stability:	Stable for 12 months from date of receipt.
Predicted Protein Size:	39 kDa
Gene Name:	SRY-box 1
Database Link:	<a href="#">NP_005977</a> <a href="#">Entrez Gene 20664 MouseEntrez Gene 100912302 RatEntrez Gene 6656 Human O00570</a>
Background:	This intronless gene encodes a member of the SOX (SRY-related HMG-box) family of transcription factors involved in the regulation of embryonic development and in the determination of the cell fate. The encoded protein may act as a transcriptional activator after forming a protein complex with other proteins. In mice; a similar protein regulates the gamma-crystallin genes and is essential for lens development.?
Synonyms:	SRY (sex determining region Y)-box 1; SRY-related HMG-box gene 1
Protein Families:	Adult stem cells, ES Cell Differentiation/IPS, Induced pluripotent stem cells, Transmembrane



[View online »](#)

**Product images:**

Predicted band size: 39 kDa. Positive control: Jurkat cell lysate. Recommended dilution: 1/200-1000. (Gel: 10%SDS-PAGE Lysate: 40 ug per lane Primary antibody: 1/350 dilution Secondary antibody: Goat anti Rabbit IgG - H&L (HRP) at 1/10000 dilution Exposure time: 20 seconds)