

Product datasheet for **TA321737**

SOX1 Rabbit Polyclonal Antibody

Product data:

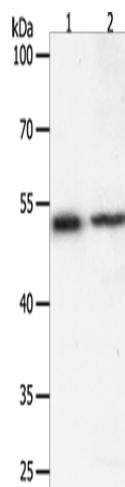
Product Type:	Primary Antibodies
Applications:	WB
Recommended Dilution:	WB: 200-1000 WB positive control: Human liver cancer tissue and 293T cells
Reactivity:	Human, Mouse
Host:	Rabbit
Isotype:	IgG
Clonality:	Polyclonal
Immunogen:	Synthetic peptide corresponding to a region derived from 378-391 amino acids of human SRY (sex determining region Y)-box 1
Formulation:	PBS pH7.3, 0.05% NaN ₃ , 50% glycerol
Concentration:	lot specific
Purification:	Antigen affinity purification
Conjugation:	Unconjugated
Storage:	Store at -20°C as received.
Stability:	Stable for 12 months from date of receipt.
Predicted Protein Size:	39 kDa
Gene Name:	SRY-box 1
Database Link:	NP_005977 Entrez Gene 20664 Mouse Entrez Gene 6656 Human O00570
Background:	This intronless gene encodes a member of the SOX (SRY-related HMG-box) family of transcription factors involved in the regulation of embryonic development and in the determination of the cell fate. The encoded protein may act as a transcriptional activator after forming a protein complex with other proteins. In mice; a similar protein regulates the gamma-crystallin genes and is essential for lens development.?
Synonyms:	SRY (sex determining region Y)-box 1; SRY-related HMG-box gene 1



[View online »](#)

Protein Families: Adult stem cells, ES Cell Differentiation/IPS, Induced pluripotent stem cells, Transmembrane

Product images:



Gel: 10%SDS-PAGE

Lysate: 40 μ g

Lane 1-2: Human liver cancer tissue

293T cells

Primary antibody: TA321737 (SOX1 Antibody) at dilution 1/400

Secondary antibody: Goat anti rabbit IgG at 1/8000 dilution

Exposure time: 20 seconds