

## Product datasheet for **TA321736**

### Melatonin Receptor 1A (MTNR1A) Rabbit Polyclonal Antibody

#### Product data:

Product Type:	Primary Antibodies
Applications:	IHC, WB
Recommended Dilution:	WB: 1000-3000 WB positive control: NIH/3T3 cells IHC: 100-300 Positive control: Human breast cancer Predicted cell location: Cytoplasm, Cell membrane
Reactivity:	Human, Mouse, Rat
Host:	Rabbit
Isotype:	IgG
Clonality:	Polyclonal
Immunogen:	Synthetic peptide peptide corresponding to a region derived from 130-144 amino acids of human melatonin receptor 1A
Formulation:	PBS pH7.3, 0.05% NaN <sub>3</sub> , 50% glycerol
Concentration:	lot specific
Purification:	Antigen affinity purification
Conjugation:	Unconjugated
Storage:	Store at -20°C as received.
Stability:	Stable for 12 months from date of receipt.
Predicted Protein Size:	39 kDa
Gene Name:	melatonin receptor 1A
Database Link:	<a href="#">NP_005949</a> <a href="#">Entrez Gene 17773 Mouse</a> <a href="#">Entrez Gene 114211 Rat</a> <a href="#">Entrez Gene 4543 Human</a> <a href="#">P48039</a>



[View online »](#)

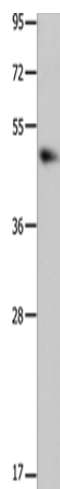
**Background:** This gene encodes one of two high affinity forms of a receptor for melatonin; the primary hormone secreted by the pineal gland. This receptor is a G-protein coupled; 7-transmembrane receptor that is responsible for melatonin effects on mammalian circadian rhythm and reproductive alterations affected by day length. The receptor is an integral membrane protein that is readily detectable and localized to two specific regions of the brain. The hypothalamic suprachiasmatic nucleus appears to be involved in circadian rhythm while the hypophysial pars tuberalis may be responsible for the reproductive effects of melatonin.

**Synonyms:** MEL-1A-R; MT1

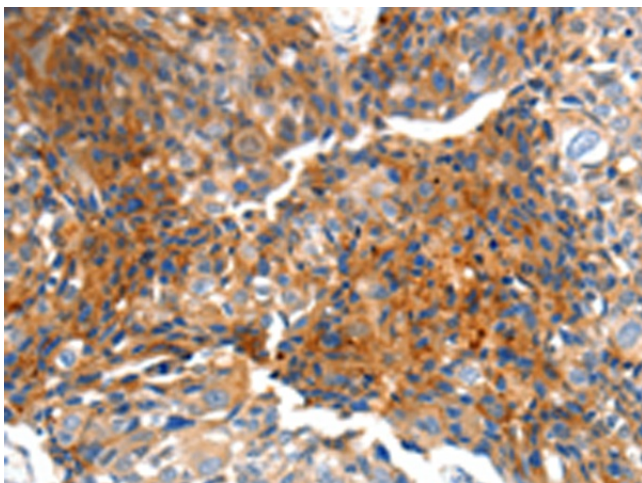
**Protein Families:** Druggable Genome, GPCR, Transmembrane

**Protein Pathways:** Neuroactive ligand-receptor interaction

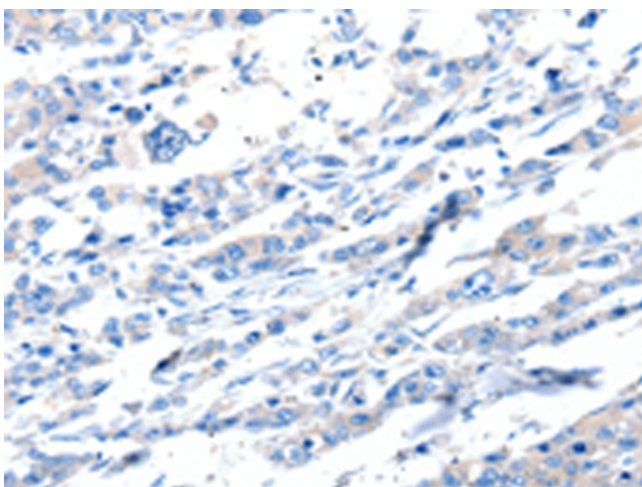
### Product images:



Gel: 10%SDS-PAGE  
Lysate: 30 µg  
Lane: NIH/3T3 cells  
Primary antibody: TA321736 (MTNR1A Antibody)  
at dilution 1/1700  
Secondary antibody: Goat anti rabbit IgG at  
1/8000 dilution  
Exposure time: 1 minute



Immunohistochemistry of paraffin-embedded  
Human breast cancer tissue using TA321736  
(MTNR1A Antibody) at dilution 1/100 (Original  
magnification: ×200)



Immunohistochemistry of paraffin-embedded Human breast cancer tissue using TA321736 (MTNR1A Antibody) at dilution 1/100, treated with synthetic peptide. (Original magnification: ×200)