

Product datasheet for **TA321735S**

Melatonin Receptor 1A (MTNR1A) Rabbit Polyclonal Antibody

Product data:

Product Type:	Primary Antibodies
Applications:	IHC, WB
Recommended Dilution:	WB: 500-2000 WB positive control: SP20 cell lysate IHC: 30-150 Positive control: Human colorectal cancer Predicted cell location: Cell membrane
Reactivity:	Human, Mouse, Rat
Host:	Rabbit
Isotype:	IgG
Clonality:	Polyclonal
Immunogen:	Synthetic peptide peptide corresponding to a region derived from 130-144 amino acids of human melatonin receptor 1A
Formulation:	PBS pH7.3, 0.05% NaN ₃ , 50% glycerol
Concentration:	lot specific
Purification:	Antigen affinity purification
Conjugation:	Unconjugated
Storage:	Store at -20°C as received.
Stability:	Stable for 12 months from date of receipt.
Predicted Protein Size:	39 kDa
Gene Name:	melatonin receptor 1A
Database Link:	NP_005949 Entrez Gene 17773 Mouse Entrez Gene 114211 Rat Entrez Gene 4543 Human P48039



[View online »](#)

Background:

This gene encodes one of two high affinity forms of a receptor for melatonin; the primary hormone secreted by the pineal gland. This receptor is a G-protein coupled; 7-transmembrane receptor that is responsible for melatonin effects on mammalian circadian rhythm and reproductive alterations affected by day length. The receptor is an integral membrane protein that is readily detectable and localized to two specific regions of the brain. The hypothalamic suprachiasmatic nucleus appears to be involved in circadian rhythm while the hypophysial pars tuberalis may be responsible for the reproductive effects of melatonin.

Synonyms:

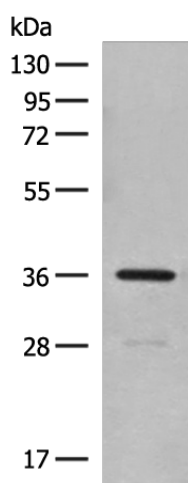
MEL-1A-R; MT1

Protein Families:

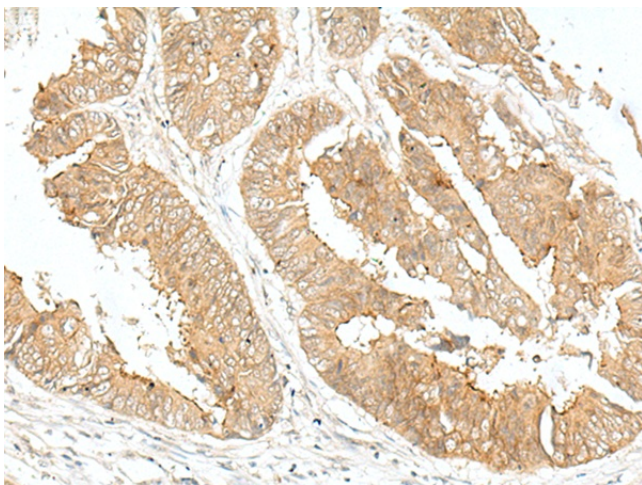
Druggable Genome, GPCR, Transmembrane

Protein Pathways:

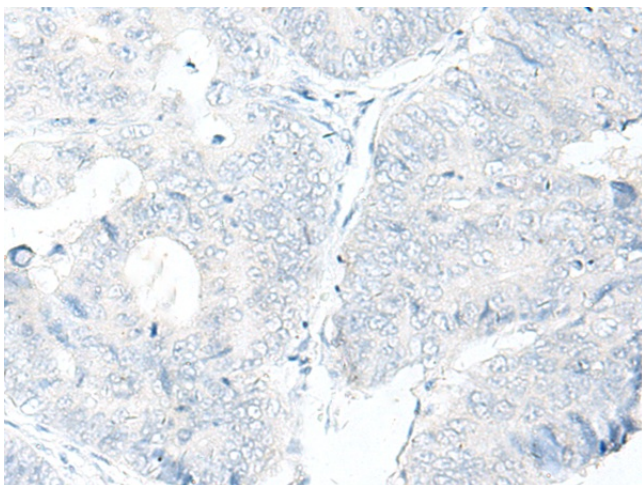
Neuroactive ligand-receptor interaction

Product images:


Gel: 8%SDS-PAGE
 Lysate: 40 µg
 Lane: SP20 cell lysate
 Primary antibody: [TA321735] (MTNR1A Antibody) at dilution 1/500
 Secondary antibody: Goat anti rabbit IgG at 1/8000 dilution
 Exposure time: 1 minute



Immunohistochemistry of paraffin-embedded Human colorectal cancer tissue using [TA321735] (MTNR1A Antibody) at dilution 1/25 (Original magnification: ×200)



Immunohistochemistry of paraffin-embedded Human colorectal cancer tissue using [TA321735] (MTNR1A Antibody) at dilution 1/25, treated with synthetic peptide. (Original magnification: ×200)