

## Product datasheet for **TA321734S**

### ASK1 (MAP3K5) Rabbit Polyclonal Antibody

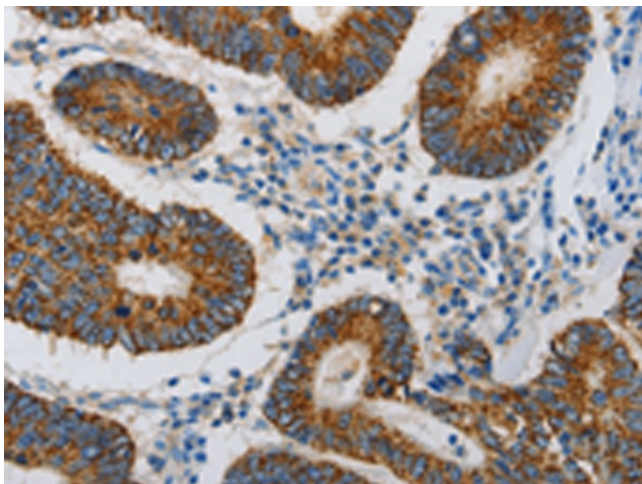
#### Product data:

Product Type:	Primary Antibodies
Applications:	IHC
Recommended Dilution:	IHC: 25-100 Positive control: Human colon cancer Predicted cell location: Cytoplasm
Reactivity:	Human, Mouse
Host:	Rabbit
Isotype:	IgG
Clonality:	Polyclonal
Immunogen:	Synthetic peptide corresponding to a region derived from 1-14 amino acids of Human mitogen-activated protein kinase kinase 5
Formulation:	PBS pH7.3, 0.05% NaN <sub>3</sub> , 50% glycerol
Concentration:	lot specific
Purification:	Antigen affinity purification
Conjugation:	Unconjugated
Storage:	Store at -20°C as received.
Stability:	Stable for 12 months from date of receipt.
Gene Name:	mitogen-activated protein kinase kinase kinase 5
Database Link:	<a href="#">NP_005914</a> <a href="#">Entrez Gene 26408 Mouse</a> <a href="#">Entrez Gene 4217 Human</a> <a href="#">Q99683</a>

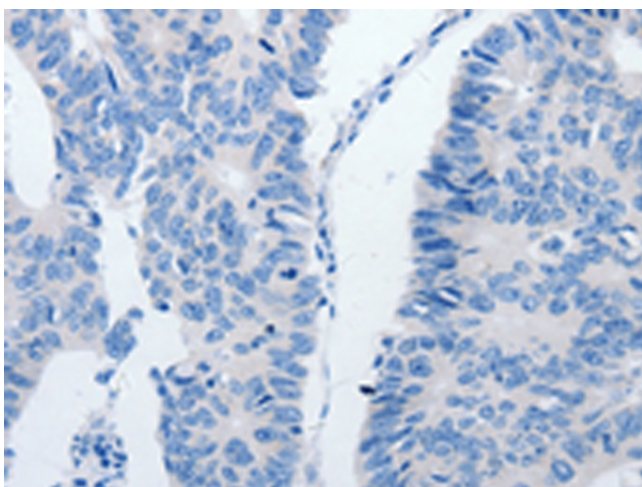


[View online »](#)

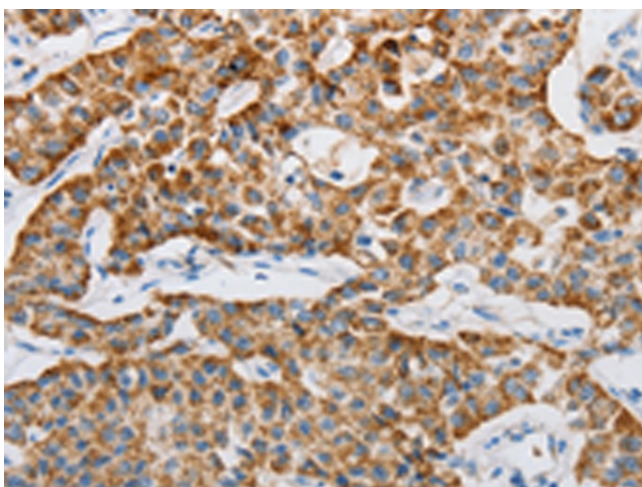
- Background:** Mitogen-activated protein kinase (MAPK) signaling cascades include MAPK or extracellular signal-regulated kinase (ERK); MAPK kinase (MKK or MEK); and MAPK kinase kinase (MAPKKK or MEKK). MAPKK kinase/MEKK phosphorylates and activates its downstream protein kinase; MAPK kinase/MEK; which in turn activates MAPK. The kinases of these signaling cascades are highly conserved; and homologs exist in yeast; Drosophila; and mammalian cells. MAPKKK5 contains 1;374 amino acids with all 11 kinase subdomains. Northern blot analysis shows that MAPKKK5 transcript is abundantly expressed in human heart and pancreas. The MAPKKK5 protein phosphorylates and activates MKK4 (aliases SERK1; MAPKK4) in vitro; and activates c-Jun N-terminal kinase (JNK)/stress-activated protein kinase (SAPK) during transient expression in COS and 293 cells; MAPKKK5 does not activate MAPK/ERK.
- Synonyms:** ASK1; MAPKKK5; MEKK5
- Protein Families:** Druggable Genome, Protein Kinase
- Protein Pathways:** Amyotrophic lateral sclerosis (ALS), MAPK signaling pathway, Neurotrophin signaling pathway

**Product images:**

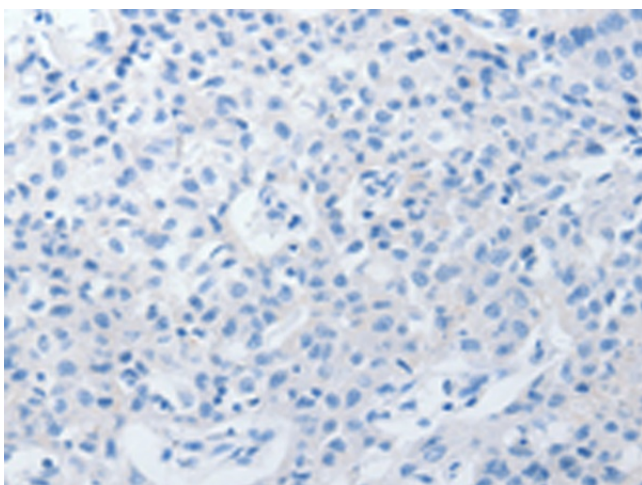
Immunohistochemistry of paraffin-embedded Human colon cancer tissue using [TA321734] (MAP3K5 Antibody) at dilution 1/20 (Original magnification: x200)



Immunohistochemistry of paraffin-embedded Human colon cancer tissue using [TA321734] (MAP3K5 Antibody) at dilution 1/20, treated with synthetic peptide. (Original magnification:  $\times 200$ )



Immunohistochemistry of paraffin-embedded Human lung cancer tissue using [TA321734] (MAP3K5 Antibody) at dilution 1/20 (Original magnification:  $\times 200$ )



Immunohistochemistry of paraffin-embedded Human lung cancer tissue using [TA321734] (MAP3K5 Antibody) at dilution 1/20, treated with synthetic peptide. (Original magnification:  $\times 200$ )