

Product datasheet for **TA321727**

PSMD14 Rabbit Polyclonal Antibody

Product data:

Product Type:	Primary Antibodies
Applications:	IHC, WB
Recommended Dilution:	WB: 500-2000 WB positive control: NIH/3T3 and 231 cells IHC: 25-100 Positive control: Human liver cancer Predicted cell location: Cytoplasm, Nucleus
Reactivity:	Human, Mouse
Host:	Rabbit
Isotype:	IgG
Clonality:	Polyclonal
Immunogen:	Fusion protein corresponding to a region derived from 216-310 amino acids of human proteasome (prosome, macropain) 26S subunit, non-ATPase, 14
Formulation:	PBS pH7.3, 0.05% NaN ₃ , 50% glycerol
Concentration:	lot specific
Purification:	Antigen affinity purification
Conjugation:	Unconjugated
Storage:	Store at -20°C as received.
Stability:	Stable for 12 months from date of receipt.
Predicted Protein Size:	35 kDa
Gene Name:	proteasome 26S subunit, non-ATPase 14
Database Link:	NP_005796 Entrez Gene 59029 Mouse Entrez Gene 10213 Human O00487



[View online »](#)

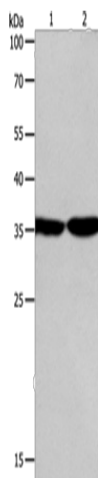
Background: This gene encodes a component of the 26S proteasome. The 26S proteasome is a large multiprotein complex that catalyzes the degradation of ubiquitinated intracellular proteins. The encoded protein is a component of the 19S regulatory cap complex of the 26S proteasome and mediates substrate deubiquitination. A pseudogene of this gene is also located on the long arm of chromosome 2.

Synonyms: PAD1; POH1; RPN11

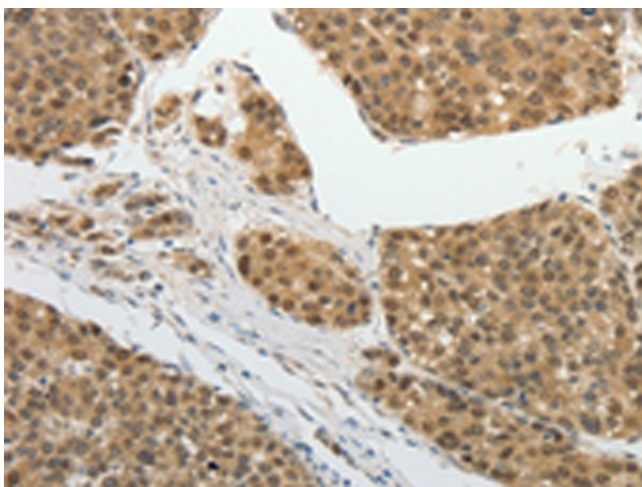
Protein Families: Druggable Genome, Protease

Protein Pathways: Proteasome

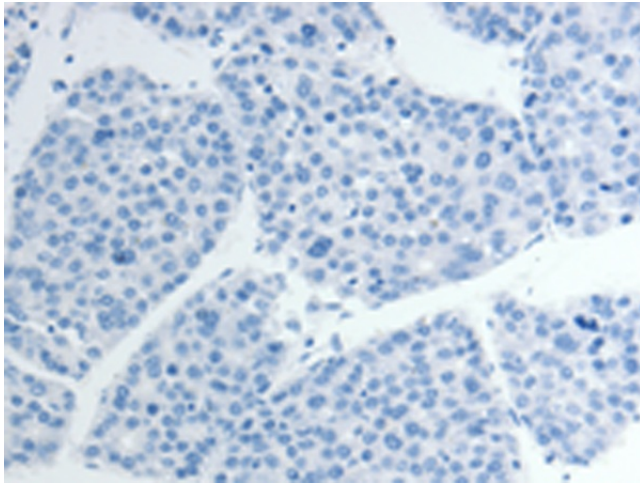
Product images:



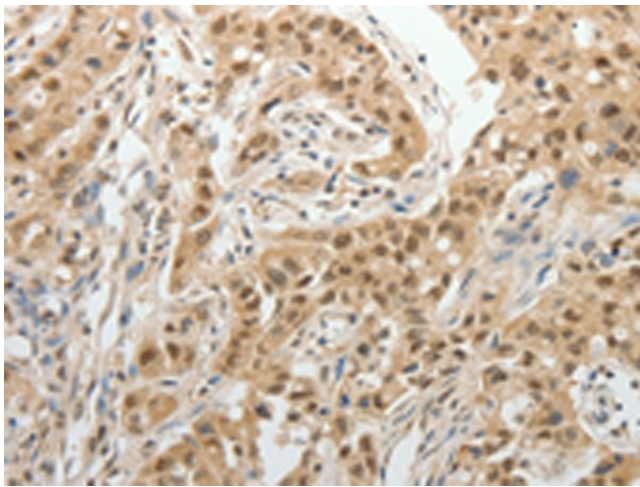
Gel: 10%SDS-PAGE
Lysate: 50 μ g
Lane 1-2: NIH/3T3 cells
231 cells
Primary antibody: TA321727 (PSMD14 Antibody)
at dilution 1/300
Secondary antibody: Goat anti rabbit IgG at
1/8000 dilution
Exposure time: 1 minute



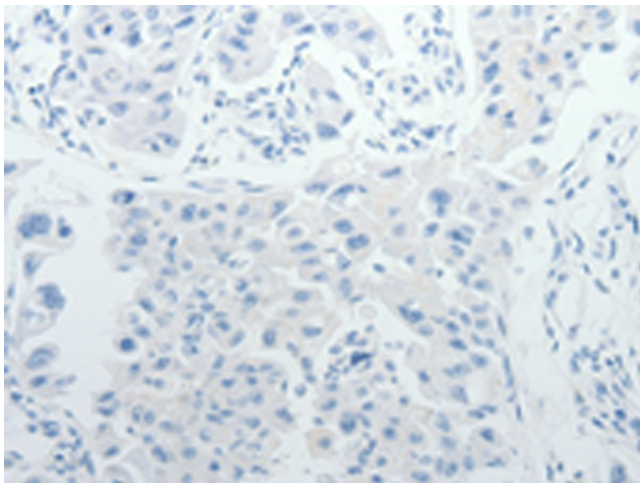
Immunohistochemistry of paraffin-embedded
Human liver cancer tissue using TA321727
(PSMD14 Antibody) at dilution 1/25 (Original
magnification: \times 200)



Immunohistochemistry of paraffin-embedded Human liver cancer tissue using TA321727 (PSMD14 Antibody) at dilution 1/25, treated with fusion protein. (Original magnification: $\times 200$)



Immunohistochemistry of paraffin-embedded Human lung cancer tissue using TA321727 (PSMD14 Antibody) at dilution 1/25 (Original magnification: $\times 200$)



Immunohistochemistry of paraffin-embedded Human lung cancer tissue using TA321727 (PSMD14 Antibody) at dilution 1/25, treated with fusion protein. (Original magnification: $\times 200$)