

## Product datasheet for **TA321724S**

### ACTR1A Rabbit Polyclonal Antibody

#### Product data:

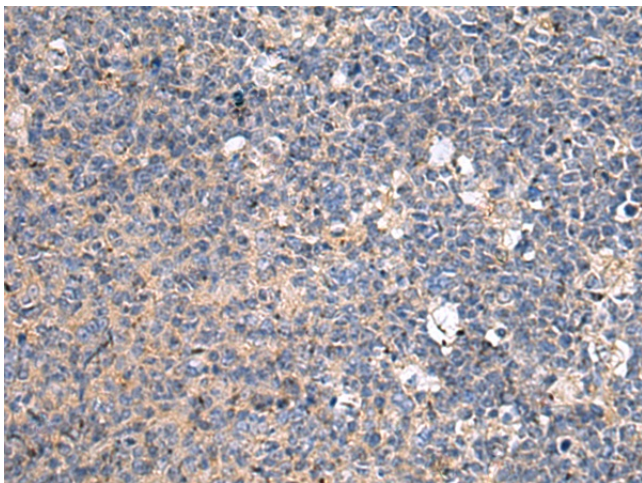
Product Type:	Primary Antibodies
Applications:	IHC
Recommended Dilution:	IHC: 50-100 Positive control: Human tonsil Predicted cell location: Cytoplasm
Reactivity:	Human, Mouse, Rat
Host:	Rabbit
Isotype:	IgG
Clonality:	Polyclonal
Immunogen:	Fusion protein corresponding to C terminal 250 amino acids of human ARP1 actin-related protein 1 homolog A, centractin alpha (yeast)
Formulation:	PBS pH7.3, 0.05% NaN <sub>3</sub> , 50% glycerol
Purification:	Antigen affinity purification
Conjugation:	Unconjugated
Storage:	Store at -20°C as received.
Stability:	Stable for 12 months from date of receipt.
Gene Name:	ARP1 actin-related protein 1 homolog A, centractin alpha
Database Link:	<a href="#">NP_005727</a> <a href="#">Entrez Gene 54130 Mouse</a> <a href="#">Entrez Gene 294010 Rat</a> <a href="#">Entrez Gene 10121 Human</a> <a href="#">P61163</a>
Background:	This gene encodes a 42.6 kD subunit of dynactin, a macromolecular complex consisting of 10-11 subunits ranging in size from 22 to 150 kD. Dynactin binds to both microtubules and cytoplasmic dynein. It is involved in a diverse array of cellular functions, including ER-to-Golgi transport, the centripetal movement of lysosomes and endosomes, spindle formation, chromosome movement, nuclear positioning, and axonogenesis. This subunit is present in 8-13 copies per dynactin molecule, and is the most abundant molecule in the dynactin complex. It is an actin-related protein, and is approximately 60% identical at the amino acid level to conventional actin.?



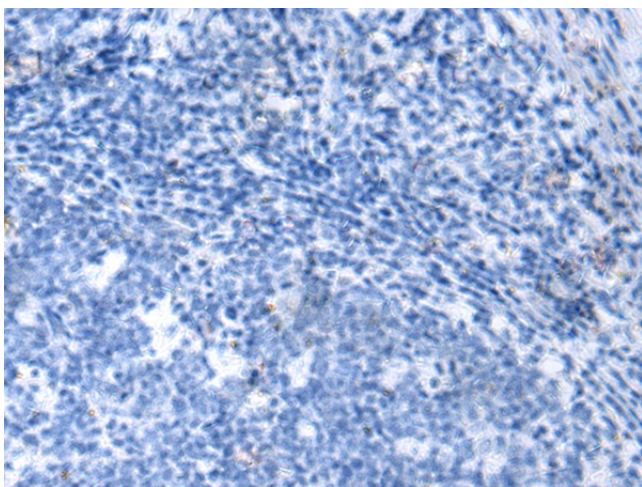
[View online »](#)

Synonyms: ARP1; Arp1A; CTRN1

**Product images:**



Immunohistochemistry of paraffin-embedded Human tonsil tissue using [TA321724] (ACTR1A Antibody) at dilution 1/75 (Original magnification: ×200)



Immunohistochemistry of paraffin-embedded Human tonsil tissue using [TA321724] (ACTR1A Antibody) at dilution 1/75, treated with fusion protein. (Original magnification: ×200)