

Product datasheet for **TA321719**

SOX13 Rabbit Polyclonal Antibody

Product data:

Product Type:	Primary Antibodies
Applications:	IHC, WB
Recommended Dilution:	WB: 500-2000 WB positive control: Mouse liver tissue IHC: 50-200 Positive control: Human tonsil Predicted cell location: Nucleus
Reactivity:	Human, Mouse
Host:	Rabbit
Isotype:	IgG
Clonality:	Polyclonal
Immunogen:	Synthetic peptide corresponding to a region derived from 610-622 amino acids of human SRY (sex determining region Y)-box 13
Formulation:	PBS pH7.3, 0.05% NaN ₃ , 50% glycerol
Concentration:	lot specific
Purification:	Antigen affinity purification
Conjugation:	Unconjugated
Storage:	Store at -20°C as received.
Stability:	Stable for 12 months from date of receipt.
Predicted Protein Size:	69 kDa
Gene Name:	SRY-box 13
Database Link:	NP_005677 Entrez Gene 20668 Mouse Entrez Gene 9580 Human Q9UN79



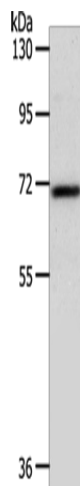
[View online »](#)

Background: This gene encodes a member of the SOX (SRY-related HMG-box) family of transcription factors involved in the regulation of embryonic development and in the determination of cell fate. The encoded protein may act as a transcriptional regulator after forming a protein complex with other proteins. It has also been determined to be a type-1 diabetes autoantigen; also known as islet cell antibody 12.

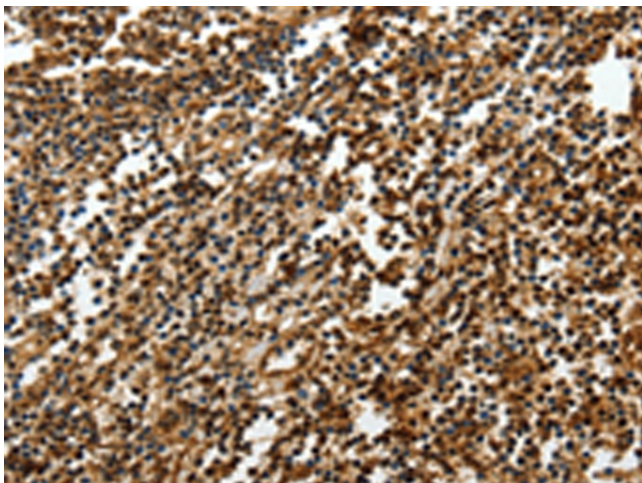
Synonyms: ICA12; Sox-13

Protein Families: Transcription Factors

Product images:



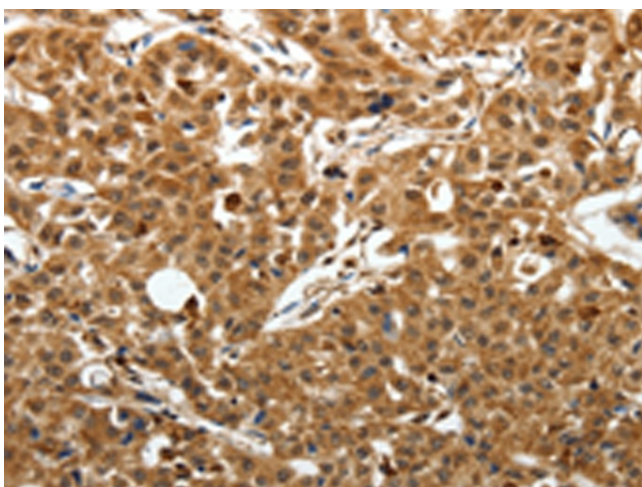
Gel: 10%SDS-PAGE
Lysate: 40 µg
Lane: Mouse liver tissue
Primary antibody: TA321719 (SOX13 Antibody) at dilution 1/800
Secondary antibody: Goat anti rabbit IgG at 1/8000 dilution
Exposure time: 1 minute



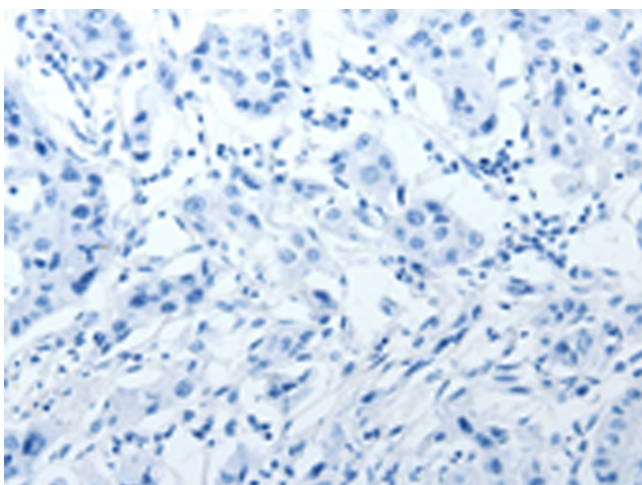
Immunohistochemistry of paraffin-embedded Human tonsil tissue using TA321719 (SOX13 Antibody) at dilution 1/50 (Original magnification: ×200)



Immunohistochemistry of paraffin-embedded Human tonsil tissue using TA321719 (SOX13 Antibody) at dilution 1/50, treated with synthetic peptide. (Original magnification: $\times 200$)



Immunohistochemistry of paraffin-embedded Human lung cancer tissue using TA321719 (SOX13 Antibody) at dilution 1/50 (Original magnification: $\times 200$)



Immunohistochemistry of paraffin-embedded Human lung cancer tissue using TA321719 (SOX13 Antibody) at dilution 1/50, treated with synthetic peptide. (Original magnification: $\times 200$)