

Product datasheet for **TA321718**

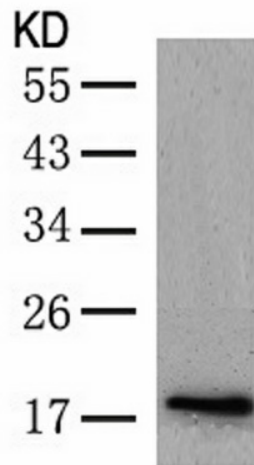
Cofilin 1 (CFL1) Rabbit Polyclonal Antibody

Product data:

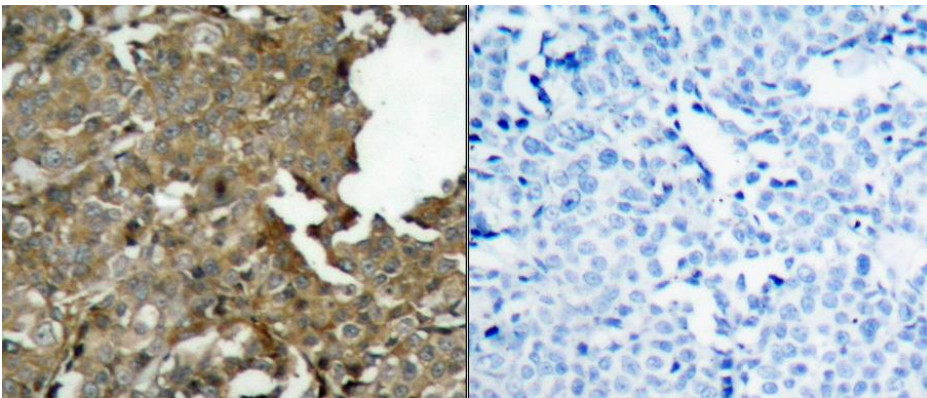
Product Type:	Primary Antibodies
Applications:	IHC, WB
Recommended Dilution:	WB: 1:500-1000, IHC: 1:50-100
Reactivity:	Human, Mouse, Rat
Host:	Rabbit
Isotype:	IgG
Clonality:	Polyclonal
Immunogen:	Peptide sequence around aa. 1~5 (M-A-S-G-V) derived from Human cofilin.
Formulation:	PBS pH7.3, 0.05% NaN ₃ , 50% glycerol
Concentration:	lot specific
Purification:	Antigen affinity purification
Conjugation:	Unconjugated
Storage:	Store at -20°C as received.
Stability:	Stable for 12 months from date of receipt.
Predicted Protein Size:	19 kDa
Gene Name:	cofilin 1
Database Link:	NP_005498 Entrez Gene 12631 MouseEntrez Gene 29271 RatEntrez Gene 1072 Human P23528
Background:	Controls reversibly actin polymerization and depolymerization in a pH-sensitive manner. It has the ability to bind G- and F-actin in a 1:1 ratio of cofilin to actin. It is the major component of intranuclear and cytoplasmic actin rods.
Synonyms:	CFL; HEL-S-15
Protein Families:	Druggable Genome
Protein Pathways:	Axon guidance, Fc gamma R-mediated phagocytosis, Regulation of actin cytoskeleton



[View online »](#)

Product images:

Predicted band size: 19 kDa. Positive control: MDA cells lysate. Recommended dilution: 1/ 500-1000. (Gel: 12%SDS-PAGE Lysate: 30 ug Primary antibody: 1/500 dilution Secondary antibody: Goat anti Rabbit IgG - H&L (HRP) at 1/10000 dilution Exposure time: 1 minute)



Predicted cell location: Nucleus matrix; Cytoplasm. Positive control: Human breast carcinoma tissue. Recommended dilution: 1/ 50-100 The image on the left is immunohistochemistry of paraffin-embedded human breast carcinoma tissue using CFL1 (Ab-3) antibody at dilution 1/50, on the right is treated with the synthetic peptide. (Original magnification: x200)