

Product datasheet for **TA321717**

Cofilin 1 (CFL1) Rabbit Polyclonal Antibody

Product data:

Product Type:	Primary Antibodies
Applications:	IF, IHC, WB
Recommended Dilution:	WB: 500-2000 WB positive control: Raji and 231 cell lysates treated with phosphatase inhibitors IHC: 20-100 Positive control: Human tonsil Predicted cell location: Cytoplasm
Reactivity:	Human, Mouse, Rat
Modifications:	Phospho-specific
Host:	Rabbit
Isotype:	IgG
Clonality:	Polyclonal
Immunogen:	Peptide sequence around phosphorylation site of serine 3 (M-A-S(p)-G-V) derived from Human cofilin.
Formulation:	PBS pH7.3, 0.05% NaN ₃ , 50% glycerol
Concentration:	lot specific
Purification:	Antigen affinity purification
Conjugation:	Unconjugated
Storage:	Store at -20°C as received.
Stability:	Stable for 12 months from date of receipt.
Predicted Protein Size:	19 kDa
Gene Name:	cofilin 1
Database Link:	NP_005498 Entrez Gene 12631 MouseEntrez Gene 29271 RatEntrez Gene 1072 Human P23528
Background:	Controls reversibly actin polymerization and depolymerization in a pH-sensitive manner. It has the ability to bind G- and F-actin in a 1:1 ratio of cofilin to actin. It is the major component of intranuclear and cytoplasmic actin rods.



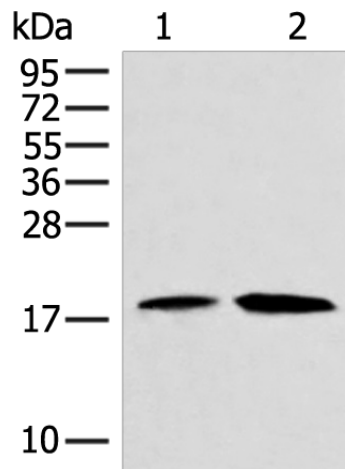
[View online »](#)

Synonyms: CFL; HEL-S-15

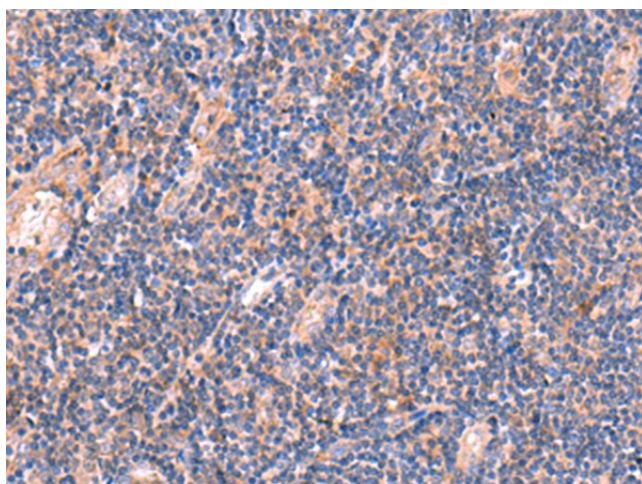
Protein Families: Druggable Genome

Protein Pathways: Axon guidance, Fc gamma R-mediated phagocytosis, Regulation of actin cytoskeleton

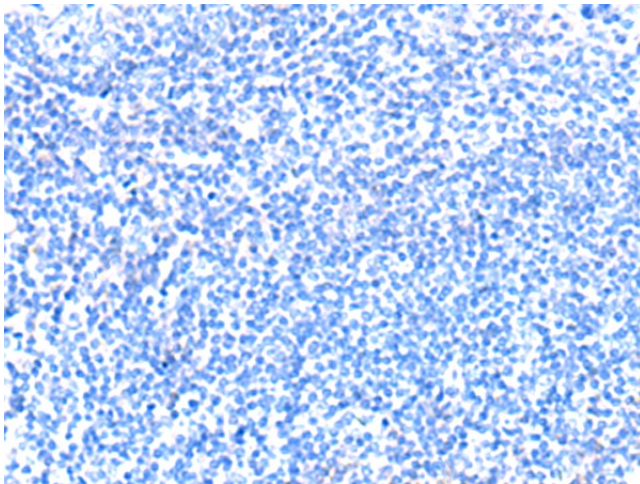
Product images:



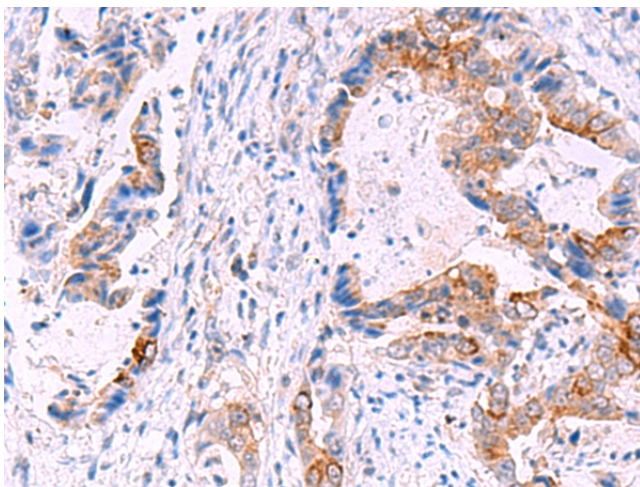
Gel: 12%SDS-PAGE
 Lysate: 40 µg
 Lane 1-2: Raji and 231 cell lysates treated with phosphatase inhibitors
 Primary antibody: TA321717 (CFL1 (Phospho-Ser3) Antibody) at dilution 1/500
 Secondary antibody: Goat anti rabbit IgG at 1/8000 dilution
 Exposure time: 10 seconds



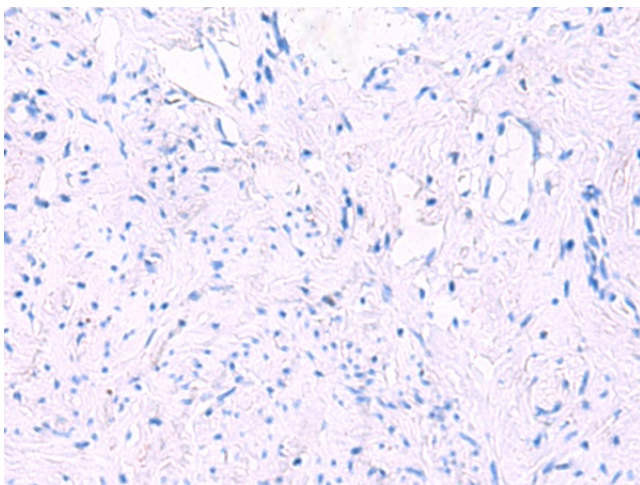
Immunohistochemistry of paraffin-embedded Human tonsil tissue using TA321717 (CFL1 (Phospho-Ser3) Antibody) at dilution 1/25 (Original magnification: ×200)



Immunohistochemistry of paraffin-embedded Human tonsil tissue using TA321717 (CFL1 (Phospho-Ser3) Antibody) at dilution 1/25, treated with synthetic peptide. (Original magnification: ×200)



Immunohistochemistry of paraffin-embedded Human cervical cancer tissue using TA321717 (CFL1 (Phospho-Ser3) Antibody) at dilution 1/25 (Original magnification: ×200)



Immunohistochemistry of paraffin-embedded Human cervical cancer tissue using TA321717 (CFL1 (Phospho-Ser3) Antibody) at dilution 1/25, treated with synthetic peptide. (Original magnification: ×200)