

Product datasheet for **TA321716**

VEGFC Rabbit Polyclonal Antibody

Product data:

| | |
|-------------------------|--|
| Product Type: | Primary Antibodies |
| Applications: | IHC, WB |
| Recommended Dilution: | WB: 200-1000 WB positive control: 231 cells IHC: 10-50 Positive control: Human ovarian cancer Predicted cell location: Cytoplasm |
| Reactivity: | Human |
| Host: | Rabbit |
| Isotype: | IgG |
| Clonality: | Polyclonal |
| Immunogen: | Synthetic peptide corresponding to a region derived from 256-270 amino acids of human vascular endothelial growth factor C |
| Formulation: | PBS pH7.3, 0.05% NaN ₃ , 50% glycerol |
| Concentration: | lot specific |
| Purification: | Antigen affinity purification |
| Conjugation: | Unconjugated |
| Storage: | Store at -20°C as received. |
| Stability: | Stable for 12 months from date of receipt. |
| Predicted Protein Size: | 46 kDa |
| Gene Name: | vascular endothelial growth factor C |
| Database Link: | NP_005420 Entrez Gene 7424 Human P49767 |



[View online »](#)

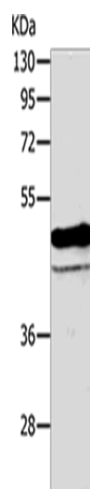
Background: The protein encoded by this gene is a member of the platelet-derived growth factor/vascular endothelial growth factor (PDGF/VEGF) family; is active in angiogenesis and endothelial cell growth; and can also affect the permeability of blood vessels. This secreted protein undergoes a complex proteolytic maturation; generating multiple processed forms which bind and activate VEGFR-3 receptors. Only the fully processed form can bind and activate VEGFR-2 receptors. This protein is structurally and functionally similar to vascular endothelial growth factor D.

Synonyms: Flt4-L; LMPH1D; VRP

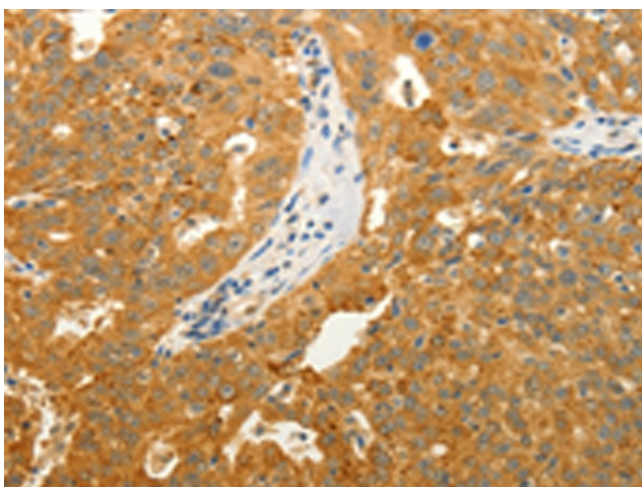
Protein Families: Druggable Genome, Secreted Protein

Protein Pathways: Bladder cancer, Cytokine-cytokine receptor interaction, Focal adhesion, mTOR signaling pathway, Pancreatic cancer, Pathways in cancer, Renal cell carcinoma

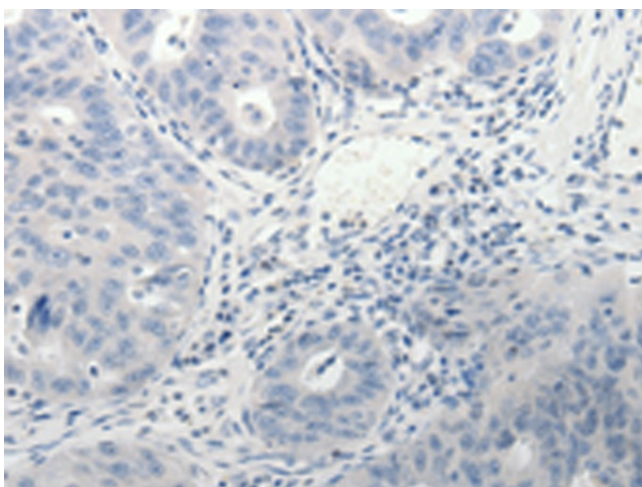
Product images:



Gel: 10%SDS-PAGE
Lysate: 40 µg
Lane: 231 cells
Primary antibody: TA321716 (VEGFC Antibody) at dilution 1/200
Secondary antibody: Goat anti rabbit IgG at 1/8000 dilution
Exposure time: 1 minute



Immunohistochemistry of paraffin-embedded Human ovarian cancer tissue using TA321716 (VEGFC Antibody) at dilution 1/5 (Original magnification: ×200)



Immunohistochemistry of paraffin-embedded Human ovarian cancer tissue using TA321716 (VEGFC Antibody) at dilution 1/5, treated with synthetic peptide. (Original magnification: $\times 200$)