

## Product datasheet for **TA321715**

### **FRA1 (FOSL1) Rabbit Polyclonal Antibody**

#### **Product data:**

<b>Product Type:</b>	Primary Antibodies
<b>Applications:</b>	IHC, WB
<b>Recommended Dilution:</b>	WB: 500-2000 WB positive control: Hela and Jurkat cells IHC: 50-200 Positive control: Human gastric cancer Predicted cell location: nucleus
<b>Reactivity:</b>	Human, Rat
<b>Host:</b>	Rabbit
<b>Isotype:</b>	IgG
<b>Clonality:</b>	Polyclonal
<b>Immunogen:</b>	Synthetic peptide corresponding to a region derived from 2-16 amino acids of Human FOS-like antigen 1
<b>Formulation:</b>	PBS pH7.3, 0.05% NaN <sub>3</sub> , 50% glycerol
<b>Concentration:</b>	lot specific
<b>Purification:</b>	Antigen affinity purification
<b>Conjugation:</b>	Unconjugated
<b>Storage:</b>	Store at -20°C as received.
<b>Stability:</b>	Stable for 12 months from date of receipt.
<b>Predicted Protein Size:</b>	29 kDa
<b>Gene Name:</b>	FOS like 1, AP-1 transcription factor subunit
<b>Database Link:</b>	<a href="#">NP_005429</a> <a href="#">Entrez Gene 25445 Rat</a> <a href="#">Entrez Gene 8061 Human</a> <a href="#">P15407</a>



[View online »](#)

**Background:**

Fos-related antigen 1 is a protein that in humans is encoded by the FOSL1 gene. The Fos gene family consists of 4 members: FOS; FOSB; FOSL1; and FOSL2. These genes encode leucine zipper proteins that can dimerize with proteins of the JUN family; thereby forming the transcription factor complex AP-1. As such; the FOS proteins have been implicated as regulators of cell proliferation; differentiation; and transformation. FOSL1 has been shown to interact with USF1 (human gene) and C-jun.

**Synonyms:**

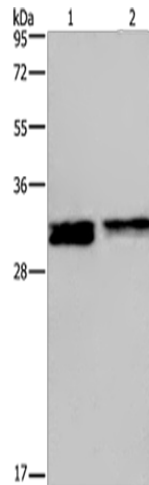
FRA; fra-1; FRA1

**Protein Families:**

Druggable Genome, Transcription Factors

**Protein Pathways:**

Wnt signaling pathway

**Product images:**

Gel: 10%SDS-PAGE

Lysate: 40  $\mu$ g

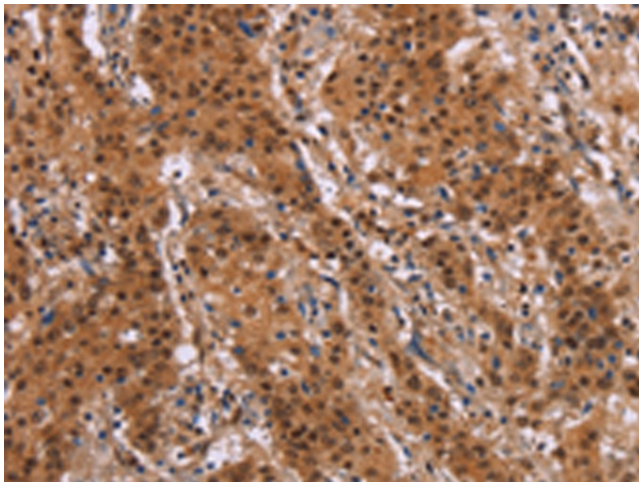
Lane 1-2: HeLa cells

Jurkat cells

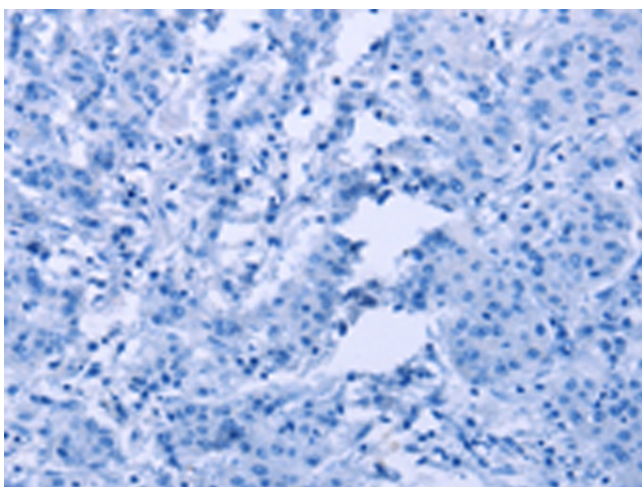
Primary antibody: TA321715 (FOSL1 Antibody) at dilution 1/615

Secondary antibody: Goat anti rabbit IgG at 1/8000 dilution

Exposure time: 20 seconds



Immunohistochemistry of paraffin-embedded Human gastric cancer tissue using TA321715 (FOSL1 Antibody) at dilution 1/30 (Original magnification:  $\times$ 200)



Immunohistochemistry of paraffin-embedded Human gastric cancer tissue using TA321715 (FOSL1 Antibody) at dilution 1/30, treated with synthetic peptide. (Original magnification: ×200)