

## Product datasheet for **TA321714**

### YES1 Rabbit Polyclonal Antibody

#### Product data:

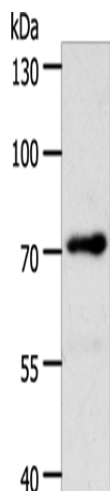
Product Type:	Primary Antibodies
Applications:	WB
Recommended Dilution:	WB: 1000-5000 WB positive control: Lncap cells
Reactivity:	Human, Mouse, Rat
Host:	Rabbit
Isotype:	IgG
Clonality:	Polyclonal
Immunogen:	Synthetic peptide corresponding to a region derived from 10-193 amino acids of human v-yes-1 Yamaguchi sarcoma viral oncogene homolog 1
Formulation:	PBS pH7.3, 0.05% NaN <sub>3</sub> , 50% glycerol
Concentration:	lot specific
Purification:	Antigen affinity purification
Conjugation:	Unconjugated
Storage:	Store at -20°C as received.
Stability:	Stable for 12 months from date of receipt.
Predicted Protein Size:	61 kDa
Gene Name:	YES proto-oncogene 1, Src family tyrosine kinase
Database Link:	<a href="#">NP_005424</a> <a href="#">Entrez Gene 22612 Mouse</a> <a href="#">Entrez Gene 24884 Rat</a> <a href="#">Entrez Gene 7525 Human</a> <a href="#">P07947</a>
Background:	This gene is the cellular homolog of the Yamaguchi sarcoma virus oncogene. The encoded protein has tyrosine kinase activity and belongs to the src family of proteins. This gene lies in close proximity to thymidylate synthase gene on chromosome 18; and a corresponding pseudogene has been found on chromosome 22.
Synonyms:	c-yes; HsT441; P61-YES; Yes
Protein Families:	Druggable Genome, Protein Kinase



[View online »](#)

Protein Pathways: Adherens junction, Tight junction

### Product images:



Gel: 8%SDS-PAGE  
Lysate: 40  $\mu$ g  
Lane: Lncap cells  
Primary antibody: TA321714 (YES1 Antibody) at dilution 1/1750  
Secondary antibody: Goat anti rabbit IgG at 1/8000 dilution  
Exposure time: 10 seconds