

Product datasheet for **TA321711**

PODXL Rabbit Polyclonal Antibody

Product data:

Product Type:	Primary Antibodies
Applications:	IHC
Recommended Dilution:	IHC: 25-100 Positive control: Human brain Predicted cell location: Cytoplasm, Apical Cell membrane
Reactivity:	Human
Host:	Rabbit
Isotype:	IgG
Clonality:	Polyclonal
Immunogen:	Synthetic peptide corresponding to a region derived from 345-357 amino acids of Human podocalyxin-like
Formulation:	PBS pH7.3, 0.05% NaN ₃ , 50% glycerol
Concentration:	lot specific
Purification:	Antigen affinity purification
Conjugation:	Unconjugated
Storage:	Store at -20°C as received.
Stability:	Stable for 12 months from date of receipt.
Gene Name:	podocalyxin like
Database Link:	NP_005388 Entrez Gene 5420 Human O00592

Background: This gene encodes a member of the sialomucin protein family. The encoded protein was originally identified as an important component of glomerular podocytes. Podocytes are highly differentiated epithelial cells with interdigitating foot processes covering the outer aspect of the glomerular basement membrane. Other biological activities of the encoded protein include: binding in a membrane protein complex with Na⁺/H⁺ exchanger regulatory factor to intracellular cytoskeletal elements; playing a role in hematopoietic cell differentiation; and being expressed in vascular endothelium cells and binding to L-selectin.

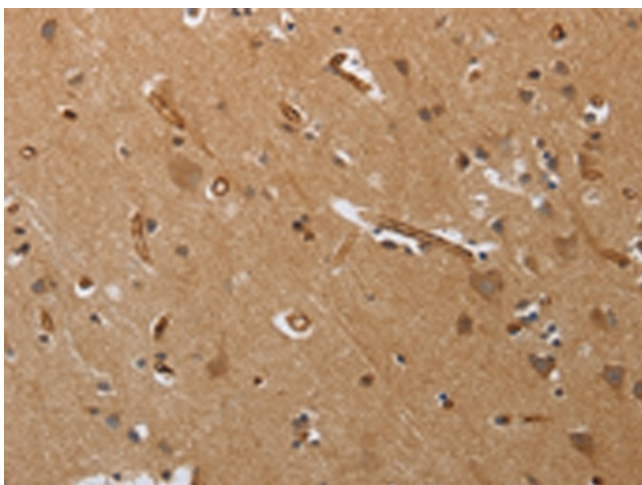


[View online »](#)

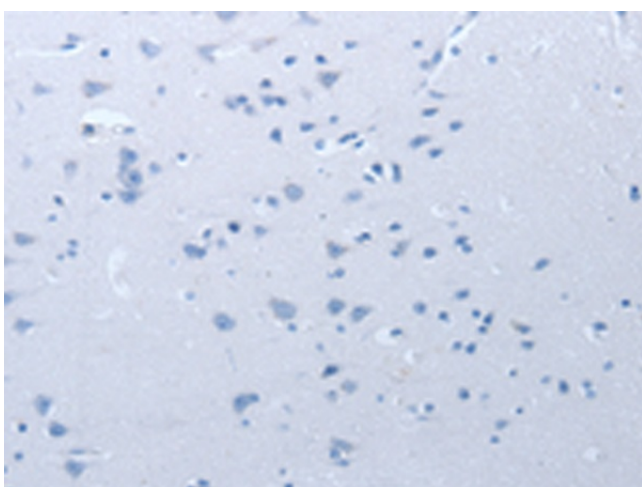
Synonyms: Gp200; PC; PCLP; PCLP-1

Protein Families: Transmembrane

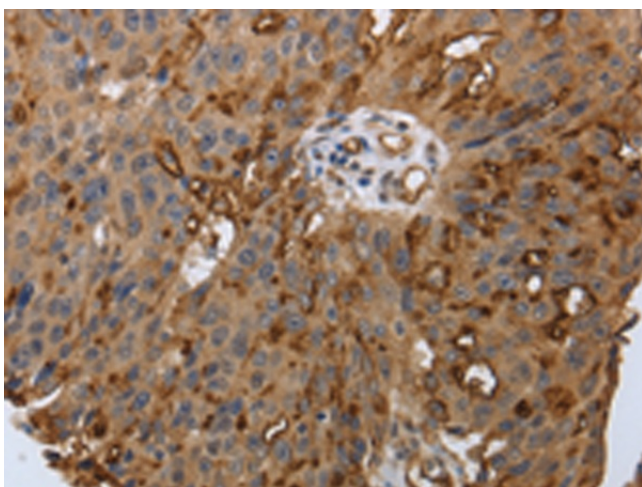
Product images:



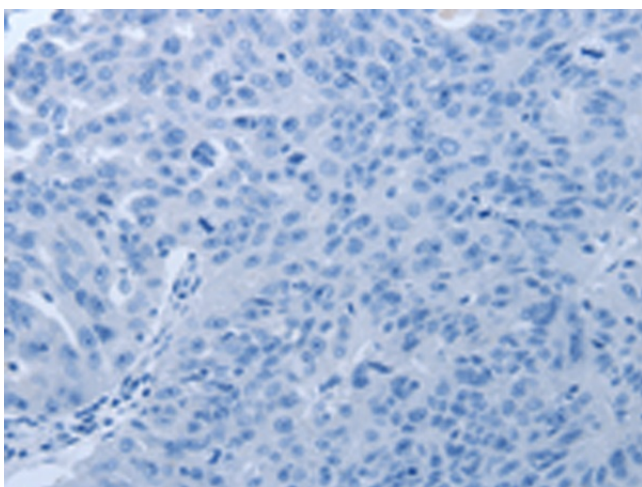
Immunohistochemistry of paraffin-embedded Human brain tissue using TA321711 (PODXL Antibody) at dilution 1/20 (Original magnification: $\times 200$)



Immunohistochemistry of paraffin-embedded Human brain tissue using TA321711 (PODXL Antibody) at dilution 1/20, treated with synthetic peptide. (Original magnification: $\times 200$)



Immunohistochemistry of paraffin-embedded Human ovarian cancer tissue using TA321711 (PODXL Antibody) at dilution 1/20 (Original magnification: $\times 200$)



Immunohistochemistry of paraffin-embedded Human ovarian cancer tissue using TA321711 (PODXL Antibody) at dilution 1/20, treated with synthetic peptide. (Original magnification: $\times 200$)