

Product datasheet for **TA321707**

HSP70-1A (HSPA1A) Rabbit Polyclonal Antibody

Product data:

Product Type:	Primary Antibodies
Applications:	IHC
Recommended Dilution:	IHC: 50-100 Positive control: Human colon cancer Predicted cell location: Cytoplasm
Reactivity:	Human, Mouse, Rat
Host:	Rabbit
Isotype:	IgG
Clonality:	Polyclonal
Immunogen:	Fusion protein corresponding to a region derived from 531-641 amino acids of human heat shock 70kDa protein 1A
Formulation:	PBS pH7.3, 0.05% NaN ₃ , 50% glycerol
Concentration:	lot specific
Purification:	Antigen affinity purification
Conjugation:	Unconjugated
Storage:	Store at -20°C as received.
Stability:	Stable for 12 months from date of receipt.
Gene Name:	heat shock protein family A (Hsp70) member 1A
Database Link:	NP_005336 Entrez Gene 24472 Rat Entrez Gene 193740 Mouse Entrez Gene 3303 Human P0DMV8

Background: This intronless gene encodes a 70kDa heat shock protein which is a member of the heat shock protein 70 family. In conjunction with other heat shock proteins; this protein stabilizes existing proteins against aggregation and mediates the folding of newly translated proteins in the cytosol and in organelles. It is also involved in the ubiquitin-proteasome pathway through interaction with the AU-rich element RNA-binding protein 1. The gene is located in the major histocompatibility complex class III region; in a cluster with two closely related genes which encode similar proteins.

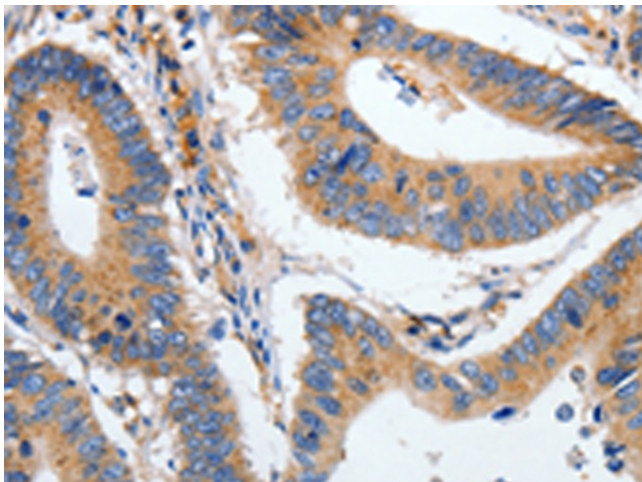


[View online »](#)

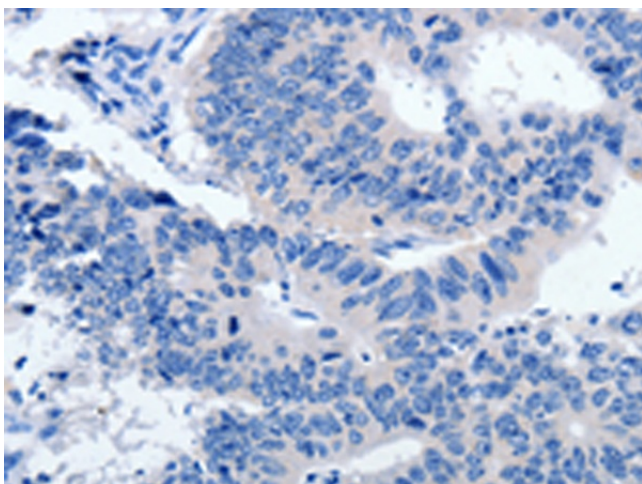
Synonyms: HEL-S-103; HSP70-1; HSP70-1A; HSP70.1; HSP70I; HSP72; HSPA1

Protein Pathways: Antigen processing and presentation, Endocytosis, MAPK signaling pathway, Prion diseases, Spliceosome

Product images:



Immunohistochemistry of paraffin-embedded Human colon cancer tissue using TA321707 (HSPA1A Antibody) at dilution 1/40 (Original magnification: ×200)



Immunohistochemistry of paraffin-embedded Human colon cancer tissue using TA321707 (HSPA1A Antibody) at dilution 1/40, treated with fusion protein. (Original magnification: ×200)