

Product datasheet for **TA321704S**

GRPR Rabbit Polyclonal Antibody

Product data:

Product Type:	Primary Antibodies
Applications:	IHC, WB
Recommended Dilution:	WB: 200-1000 WB positive control: Human hepatocellular carcinoma tissue and A549 cells IHC: 50-200 Positive control: Human cervical cancer Predicted cell location: Cytoplasm
Reactivity:	Human, Mouse, Rat
Host:	Rabbit
Isotype:	IgG
Clonality:	Polyclonal
Immunogen:	Synthetic peptide corresponding to a region derived from 350-365 amino acids of Human gastrin-releasing peptide receptor
Formulation:	PBS pH7.3, 0.05% NaN ₃ , 50% glycerol
Purification:	Antigen affinity purification
Conjugation:	Unconjugated
Storage:	Store at -20°C as received.
Stability:	Stable for 12 months from date of receipt.
Predicted Protein Size:	43 kDa
Gene Name:	gastrin releasing peptide receptor
Database Link:	NP_005305 Entrez Gene 14829 Mouse Entrez Gene 24938 Rat Entrez Gene 2925 Human P30550



[View online »](#)

Background:

Gastrin-releasing peptide (GRP) regulates numerous functions of the gastrointestinal and central nervous systems; including release of gastrointestinal hormones; smooth muscle cell contraction; and epithelial cell proliferation and is a potent mitogen for neoplastic tissues. The effects of GRP are mediated through the gastrin-releasing peptide receptor. This receptor is a glycosylated; 7-transmembrane G-protein coupled receptor that activates the phospholipase C signaling pathway. The receptor is aberrantly expressed in numerous cancers such as those of the lung; colon; and prostate. An individual with autism and multiple exostoses was found to have a balanced translocation between chromosome 8 and a chromosome X breakpoint located within the gastrin-releasing peptide receptor gene.

Synonyms:

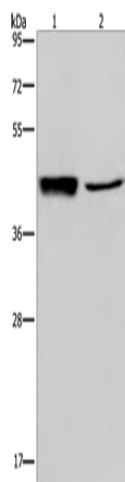
BB2; BB2R

Protein Families:

Druggable Genome, GPCR, Transmembrane

Protein Pathways:

Calcium signaling pathway, Neuroactive ligand-receptor interaction

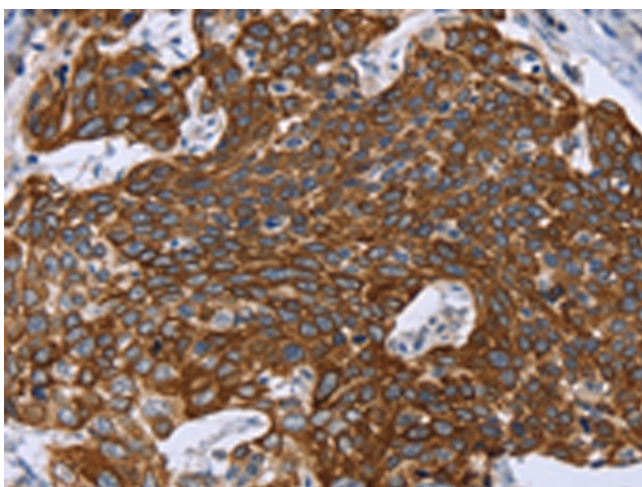
Product images:

Gel: 8%SDS-PAGE

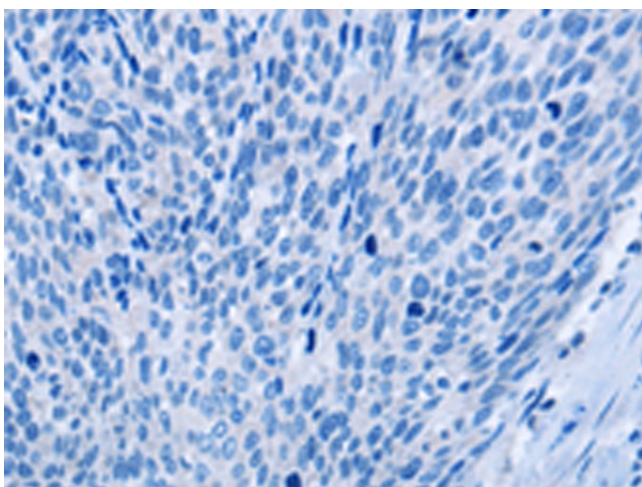
Lysate: 40 µg

Lane 1-2: Human hepatocellular carcinoma tissue
A549 cellsPrimary antibody: [TA321704] (GRPR Antibody) at
dilution 1/300Secondary antibody: Goat anti rabbit IgG at
1/8000 dilution

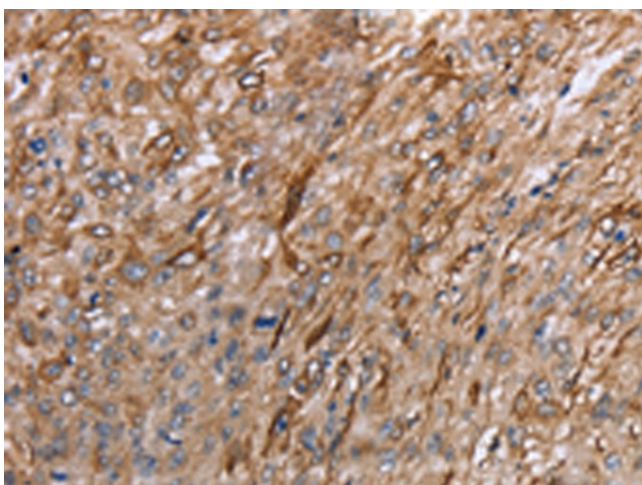
Exposure time: 5 minutes



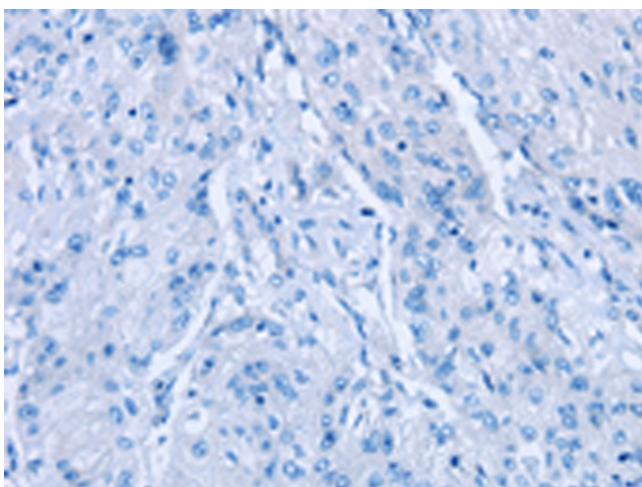
Immunohistochemistry of paraffin-embedded Human cervical cancer tissue using [TA321704] (GRPR Antibody) at dilution 1/40 (Original magnification: $\times 200$)



Immunohistochemistry of paraffin-embedded Human cervical cancer tissue using [TA321704] (GRPR Antibody) at dilution 1/40, treated with synthetic peptide. (Original magnification: $\times 200$)



Immunohistochemistry of paraffin-embedded Human esophagus cancer tissue using [TA321704] (GRPR Antibody) at dilution 1/40 (Original magnification: $\times 200$)



Immunohistochemistry of paraffin-embedded Human esophagus cancer tissue using [TA321704] (GRPR Antibody) at dilution 1/40, treated with synthetic peptide. (Original magnification: $\times 200$)