

Product datasheet for **TA321702**

P2Y9 (LPAR4) Rabbit Polyclonal Antibody

Product data:

Product Type:	Primary Antibodies
Applications:	WB
Recommended Dilution:	WB: 200-1000 WB positive control: HT-29 cells
Reactivity:	Human, Mouse
Host:	Rabbit
Isotype:	IgG
Clonality:	Polyclonal
Immunogen:	Synthetic peptide corresponding to a region derived from 140-154 amino acids of human lysophosphatidic acid receptor 4
Formulation:	PBS pH7.3, 0.05% NaN ₃ , 50% glycerol
Concentration:	lot specific
Purification:	Antigen affinity purification
Conjugation:	Unconjugated
Storage:	Store at -20°C as received.
Stability:	Stable for 12 months from date of receipt.
Predicted Protein Size:	42 kDa
Gene Name:	lysophosphatidic acid receptor 4
Database Link:	NP_005287 Entrez Gene 78134 Mouse Entrez Gene 2846 Human Q99677
Background:	This gene encodes a member of the lysophosphatidic acid receptor family. It may also be related to the P2Y receptors; a family of receptors that bind purine and pyrimidine nucleotides and are coupled to G proteins. The encoded protein may play a role in monocytic differentiation. Receptor for lysophosphatidic acid (LPA); a mediator of diverse cellular activities. Transduces a signal by increasing the intracellular calcium ions and by stimulating adenylyl cyclase activity.
Synonyms:	GPR23; LPA4; P2RY9; P2Y5-LIKE; P2Y9

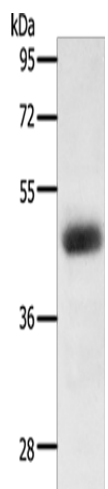


[View online »](#)

Protein Families: Druggable Genome, GPCR, Transmembrane

Protein Pathways: Neuroactive ligand-receptor interaction

Product images:



Gel: 12%SDS-PAGE

Lysate: 40 μ g

Lane: HT29 cells

Primary antibody: TA321702 (LPAR4 Antibody) at dilution 1/300

Secondary antibody: Goat anti rabbit IgG at 1/8000 dilution

Exposure time: 2 minutes