

## Product datasheet for **TA321701S**

### **P2Y9 (LPAR4) Rabbit Polyclonal Antibody**

#### **Product data:**

Product Type:	Primary Antibodies
Applications:	IHC, WB
Recommended Dilution:	WB: 200-1000 WB positive control: Human liver cancer tissue IHC: 25-100 Positive control: Human brain Predicted cell location: Cytoplasm, Cell membrane
Reactivity:	Human, Mouse, Rat
Host:	Rabbit
Isotype:	IgG
Clonality:	Polyclonal
Immunogen:	Synthetic peptide corresponding to a region derived from 358-370 amino acids of Human lysophosphatidic acid receptor 4
Formulation:	PBS pH7.3, 0.05% NaN <sub>3</sub> , 50% glycerol
Purification:	Antigen affinity purification
Conjugation:	Unconjugated
Storage:	Store at -20°C as received.
Stability:	Stable for 12 months from date of receipt.
Predicted Protein Size:	42 kDa
Gene Name:	lysophosphatidic acid receptor 4
Database Link:	<a href="#">NP_005287</a> <a href="#">Entrez Gene 78134 Mouse</a> <a href="#">Entrez Gene 302378 Rat</a> <a href="#">Entrez Gene 2846 Human</a> <a href="#">Q99677</a>
Background:	This gene encodes a member of the lysophosphatidic acid receptor family. It may also be related to the P2Y receptors; a family of receptors that bind purine and pyrimidine nucleotides and are coupled to G proteins. The encoded protein may play a role in monocytic differentiation.
Synonyms:	GPR23; LPA4; P2RY9; P2Y5-LIKE; P2Y9



[View online »](#)

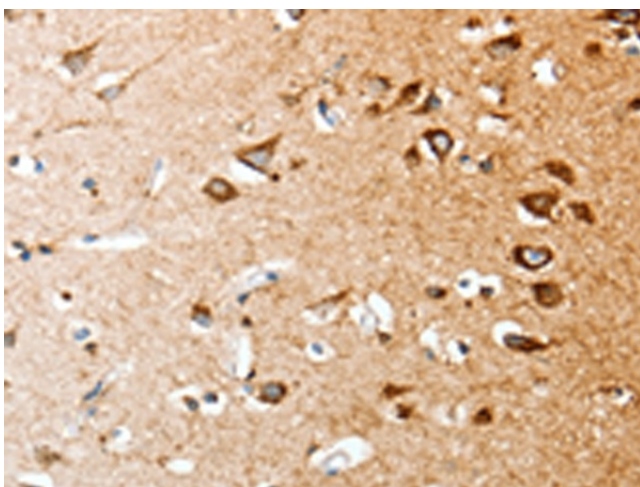
Protein Families: Druggable Genome, GPCR, Transmembrane

Protein Pathways: Neuroactive ligand-receptor interaction

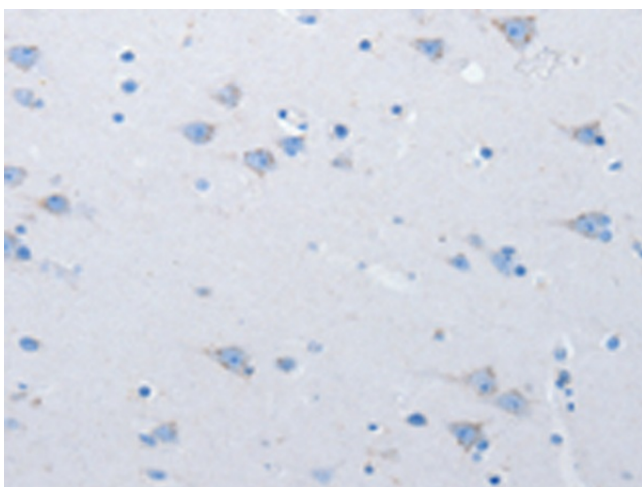
### Product images:



Gel: 10%SDS-PAGE  
Lysate: 40  $\mu$ g  
Lane: Human liver cancer tissue  
Primary antibody: [TA321701] (LPAR4 Antibody)  
at dilution 1/250  
Secondary antibody: Goat anti rabbit IgG at  
1/8000 dilution  
Exposure time: 1 minute



Immunohistochemistry of paraffin-embedded  
Human brain tissue using [TA321701] (LPAR4  
Antibody) at dilution 1/20 (Original magnification:  
 $\times$ 200)



Immunohistochemistry of paraffin-embedded Human brain tissue using [TA321701] (LPAR4 Antibody) at dilution 1/20, treated with synthetic peptide. (Original magnification:  $\times 200$ )