

Product datasheet for **TA321700**

P2Y9 (LPAR4) Rabbit Polyclonal Antibody

Product data:

Product Type:	Primary Antibodies
Applications:	IHC, WB
Recommended Dilution:	WB: 1000-5000 WB positive control: Hela cell, Human cerebella tissue lysates IHC: 50-100 Positive control: Human esophagus cancer Predicted cell location: Cell membrane
Reactivity:	Human, Mouse
Host:	Rabbit
Isotype:	IgG
Clonality:	Polyclonal
Immunogen:	Synthetic peptide corresponding to a region derived from 358-370 amino acids of Human lysophosphatidic acid receptor 4
Formulation:	PBS pH7.3, 0.05% NaN ₃ , 50% glycerol
Concentration:	lot specific
Purification:	Antigen affinity purification
Conjugation:	Unconjugated
Storage:	Store at -20°C as received.
Stability:	Stable for 12 months from date of receipt.
Predicted Protein Size:	42 kDa
Gene Name:	lysophosphatidic acid receptor 4
Database Link:	NP_005287 Entrez Gene 78134 Mouse Entrez Gene 2846 Human Q99677
Background:	This gene encodes a member of the lysophosphatidic acid receptor family. It may also be related to the P2Y receptors; a family of receptors that bind purine and pyrimidine nucleotides and are coupled to G proteins. The encoded protein may play a role in monocytic differentiation.



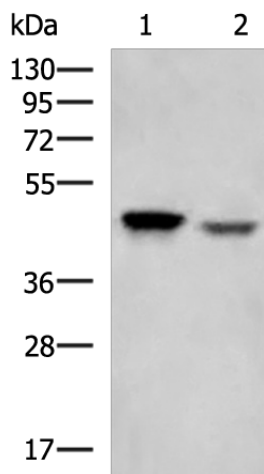
[View online »](#)

Synonyms: GPR23; LPA4; P2RY9; P2Y5-LIKE; P2Y9

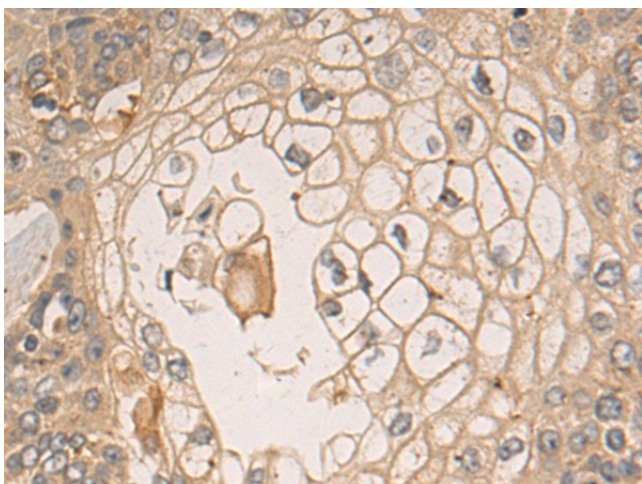
Protein Families: Druggable Genome, GPCR, Transmembrane

Protein Pathways: Neuroactive ligand-receptor interaction

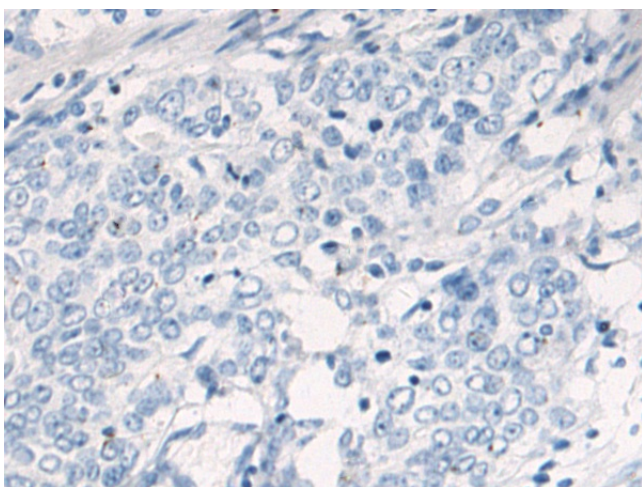
Product images:



Gel: 8%SDS-PAGE
Lysate: 40 µg
Lane 1-2: HeLa cell
Human cerebella tissue lysates
Primary antibody: TA321700 (LPAR4 Antibody) at dilution 1/1000
Secondary antibody: Goat anti rabbit IgG at 1/5000 dilution
Exposure time: 1 minute



Immunohistochemistry of paraffin-embedded Human esophagus cancer tissue using TA321700 (LPAR4 Antibody) at dilution 1/50 (Original magnification: ×200)



Immunohistochemistry of paraffin-embedded Human esophagus cancer tissue using TA321700 (LPAR4 Antibody) at dilution 1/50, treated with synthetic peptide. (Original magnification: $\times 200$)