

## Product datasheet for **TA321698**

### GPR6 Rabbit Polyclonal Antibody

#### Product data:

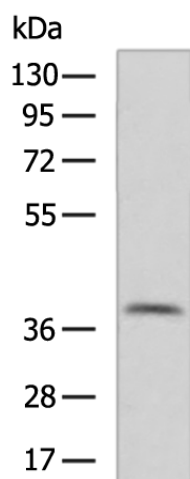
Product Type:	Primary Antibodies
Applications:	WB
Recommended Dilution:	WB: 500-2000 WB positive control: Human cerebrum tissue lysate
Reactivity:	Human, Mouse, Rat
Host:	Rabbit
Isotype:	IgG
Clonality:	Polyclonal
Immunogen:	Synthetic peptide corresponding to a region derived from 347-362 amino acids of Human G protein-coupled receptor 6
Formulation:	PBS pH7.3, 0.05% NaN <sub>3</sub> , 50% glycerol
Concentration:	lot specific
Purification:	Antigen affinity purification
Conjugation:	Unconjugated
Storage:	Store at -20°C as received.
Stability:	Stable for 12 months from date of receipt.
Predicted Protein Size:	38 kDa
Gene Name:	G protein-coupled receptor 6
Database Link:	<a href="#">NP_005275</a> <a href="#">Entrez Gene 83683 Rat</a> <a href="#">Entrez Gene 140741 Mouse</a> <a href="#">Entrez Gene 2830 Human</a> <a href="#">P46095</a>
Background:	G protein-coupled receptor 6; also known as GPR6; is a protein which in humans is encoded by the GPR6 gene. GPR6 is a member of the G protein-coupled receptor family of transmembrane receptors. It has been reported that GPR6 is both constitutively active but in addition is further activated by sphingosine-1-phosphate. GPR6 up-regulates cyclic AMP levels and promotes neurite outgrowth.
Synonyms:	G protein-coupled receptor 6



[View online »](#)

Protein Families: Druggable Genome, GPCR, Transmembrane

### Product images:



Gel: 8%SDS-PAGE  
Lysate: 40  $\mu$ g  
Lane: Human cerebrum tissue lysate  
Primary antibody: TA321698 (GPR6 Antibody) at dilution 1/500  
Secondary antibody: Goat anti rabbit IgG at 1/5000 dilution  
Exposure time: 1 minute