

## Product datasheet for **TA321696**

### **GATA6 Rabbit Polyclonal Antibody**

#### **Product data:**

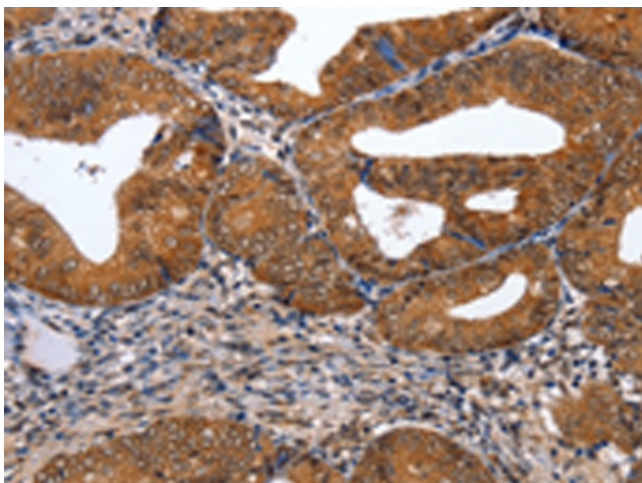
<b>Product Type:</b>	Primary Antibodies
<b>Applications:</b>	IHC
<b>Recommended Dilution:</b>	IHC: 50-200 Positive control: Human cervical cancer Predicted cell location: Cytoplasm, Nucleus
<b>Reactivity:</b>	Human, Mouse, Rat
<b>Host:</b>	Rabbit
<b>Isotype:</b>	IgG
<b>Clonality:</b>	Polyclonal
<b>Immunogen:</b>	Synthetic peptide corresponding to a region derived from 9-23 amino acids of Human GATA binding protein 7
<b>Formulation:</b>	PBS pH7.3, 0.05% NaN <sub>3</sub> , 50% glycerol
<b>Concentration:</b>	lot specific
<b>Purification:</b>	Antigen affinity purification
<b>Conjugation:</b>	Unconjugated
<b>Storage:</b>	Store at -20°C as received.
<b>Stability:</b>	Stable for 12 months from date of receipt.
<b>Gene Name:</b>	GATA binding protein 6
<b>Database Link:</b>	<a href="#">NP_005248</a> <a href="#">Entrez Gene 14465 Mouse</a> <a href="#">Entrez Gene 29300 Rat</a> <a href="#">Entrez Gene 2627 Human</a> <a href="#">Q92908</a>
<b>Background:</b>	This gene is a member of a small family of zinc finger transcription factors that play an important role in the regulation of cellular differentiation and organogenesis during vertebrate development. This gene is expressed during early embryogenesis and localizes to endo- and mesodermally derived cells during later embryogenesis and thereby plays an important role in gut; lung; and heart development. Mutations in this gene are associated with several congenital defects.
<b>Synonyms:</b>	GATA-binding protein 6; GATA binding protein 6; transcription factor GATA-6



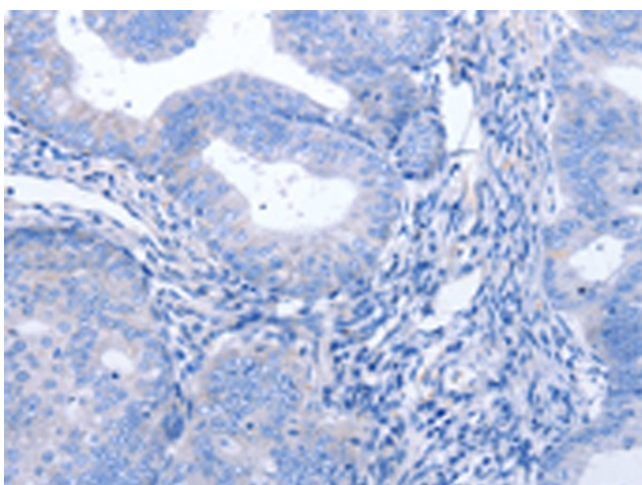
[View online »](#)

Protein Families: Embryonic stem cells, ES Cell Differentiation/IPS, Transcription Factors

**Product images:**



Immunohistochemistry of paraffin-embedded Human cervical cancer tissue using TA321696 (GATA6 Antibody) at dilution 1/35 (Original magnification:  $\times 200$ )



Immunohistochemistry of paraffin-embedded Human cervical cancer tissue using TA321696 (GATA6 Antibody) at dilution 1/35, treated with synthetic peptide. (Original magnification:  $\times 200$ )