

Product datasheet for **TA321694**

Eph receptor A1 (EPHA1) Rabbit Polyclonal Antibody

Product data:

| | |
|-----------------------|---|
| Product Type: | Primary Antibodies |
| Applications: | IHC |
| Recommended Dilution: | IHC: 10-50 Positive control: Human colon cancer Predicted cell location: Cytoplasm, Cell membrane |
| Reactivity: | Human, Mouse |
| Host: | Rabbit |
| Isotype: | IgG |
| Clonality: | Polyclonal |
| Immunogen: | Synthetic peptide corresponding to a region derived from 934-951 amino acids of Human Ephrin type-A receptor 1 |
| Formulation: | PBS pH7.3, 0.05% NaN ₃ , 50% glycerol |
| Concentration: | lot specific |
| Purification: | Antigen affinity purification |
| Conjugation: | Unconjugated |
| Storage: | Store at -20°C as received. |
| Stability: | Stable for 12 months from date of receipt. |
| Gene Name: | EPH receptor A1 |
| Database Link: | NP_005223 Entrez Gene 13835 Mouse Entrez Gene 2041 Human P21709 |



[View online »](#)

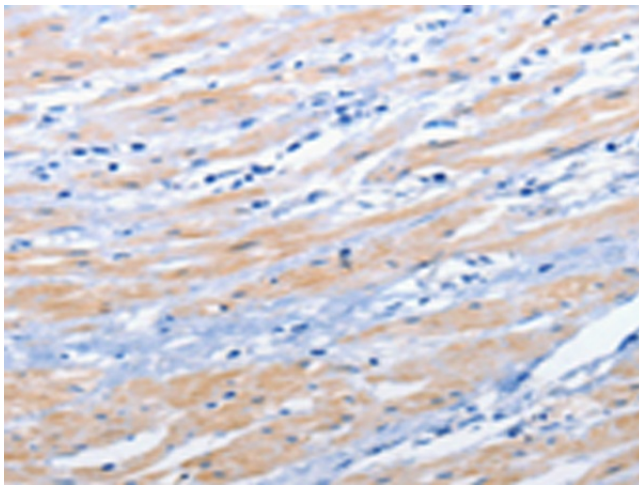
Background: This gene belongs to the ephrin receptor subfamily of the protein-tyrosine kinase family. EPH and EPH-related receptors have been implicated in mediating developmental events; particularly in the nervous system. Receptors in the EPH subfamily typically have a single kinase domain and an extracellular region containing a Cys-rich domain and 2 fibronectin type III repeats. The ephrin receptors are divided into 2 groups based on the similarity of their extracellular domain sequences and their affinities for binding ephrin-A and ephrin-B ligands. This gene is expressed in some human cancer cell lines and has been implicated in carcinogenesis.

Synonyms: EPH; EPHT; EPHT1

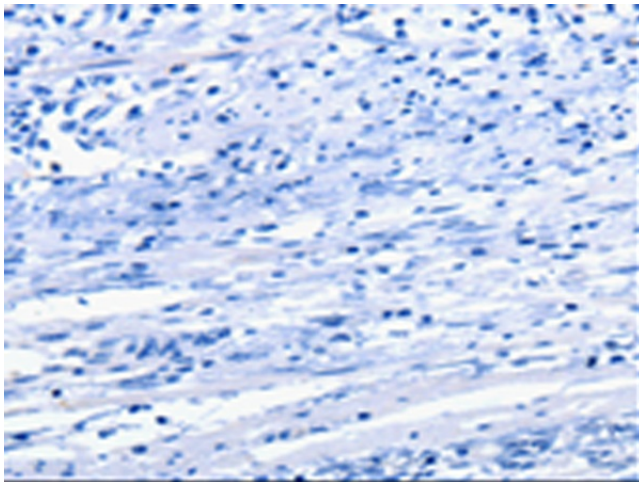
Protein Families: Druggable Genome, Protein Kinase, Transmembrane

Protein Pathways: Axon guidance

Product images:



Immunohistochemistry of paraffin-embedded Human colon cancer tissue using TA321694 (EPHA1 Antibody) at dilution 1/25 (Original magnification: $\times 200$)



Immunohistochemistry of paraffin-embedded Human colon cancer tissue using TA321694 (EPHA1 Antibody) at dilution 1/25, treated with synthetic peptide. (Original magnification: $\times 200$)