

## Product datasheet for **TA321692**

### EDG3 (S1PR3) Rabbit Polyclonal Antibody

#### Product data:

Product Type:	Primary Antibodies
Applications:	WB
Recommended Dilution:	WB: 500-2000 WB positive control: PC3 cells
Reactivity:	Human, Mouse
Host:	Rabbit
Isotype:	IgG
Clonality:	Polyclonal
Immunogen:	Synthetic peptide corresponding to a region derived from 222-236 amino acids of human sphingosine-1-phosphate receptor 3
Formulation:	PBS pH7.3, 0.05% NaN <sub>3</sub> , 50% glycerol
Concentration:	lot specific
Purification:	Antigen affinity purification
Conjugation:	Unconjugated
Storage:	Store at -20°C as received.
Stability:	Stable for 12 months from date of receipt.
Predicted Protein Size:	42 kDa
Gene Name:	sphingosine-1-phosphate receptor 3
Database Link:	<a href="#">NP_005217</a> <a href="#">Entrez Gene 13610 Mouse</a> <a href="#">Entrez Gene 1903 Human</a> <a href="#">Q99500</a>
Background:	This gene encodes a member of the EDG family of receptors; which are G protein-coupled receptors. This protein has been identified as a functional receptor for sphingosine 1-phosphate and likely contributes to the regulation of angiogenesis and vascular endothelial cell function. Receptor for the lysosphingolipid sphingosine 1-phosphate (S1P). S1P is a bioactive lysophospholipid that elicits diverse physiological effect on most types of cells and tissues. When expressed in rat HTC4 hepatoma cells; is capable of mediating S1P-induced cell proliferation and suppression of apoptosis.

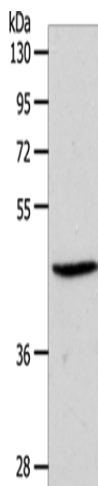


[View online »](#)

**Synonyms:** EDG-3; EDG3; LPB3; S1P3

**Protein Families:** Druggable Genome, GPCR, Transmembrane

**Protein Pathways:** Neuroactive ligand-receptor interaction

**Product images:**

Gel: 10%SDS-PAGE  
Lysate: 50  $\mu$ g  
Lane: PC3 cells  
Primary antibody: TA321692 (S1PR3 Antibody) at dilution 1/550  
Secondary antibody: Goat anti rabbit IgG at 1/8000 dilution  
Exposure time: 20 seconds