

## Product datasheet for **TA321686**

### CBL Rabbit Polyclonal Antibody

#### Product data:

Product Type:	Primary Antibodies
Applications:	IF, IHC, WB
Recommended Dilution:	WB: 1:500-1000, IHC: 1:50-100, IF: 1:100-200
Reactivity:	Human
Modifications:	Phospho-specific
Host:	Rabbit
Isotype:	IgG
Clonality:	Polyclonal
Immunogen:	Peptide sequence around phosphorylation site of tyrosine 770 (T-E-Y(p)-M-T) derived from Human c-Cbl.
Formulation:	PBS pH7.3, 0.05% NaN <sub>3</sub> , 50% glycerol
Concentration:	lot specific
Purification:	Antigen affinity purification
Conjugation:	Unconjugated
Storage:	Store at -20°C as received.
Stability:	Stable for 12 months from date of receipt.
Predicted Protein Size:	120 kDa
Gene Name:	Cbl proto-oncogene
Database Link:	<a href="#">NP_005179</a> <a href="#">Entrez Gene 867 Human</a> <a href="#">P22681</a>
Background:	Participates in signal transduction in hematopoietic cells. Adapter protein that functions as a negative regulator of many signaling pathways that start from receptors at the cell surface. Acts as an E3 ubiquitin-protein ligase, which accepts ubiquitin from specific E2 ubiquitin-conjugating enzymes, and then transfers it to substrates promoting their degradation by the proteasome. Recognizes activated receptor tyrosine kinases, including PDGFA, EGF and CSF1, and terminates signaling.

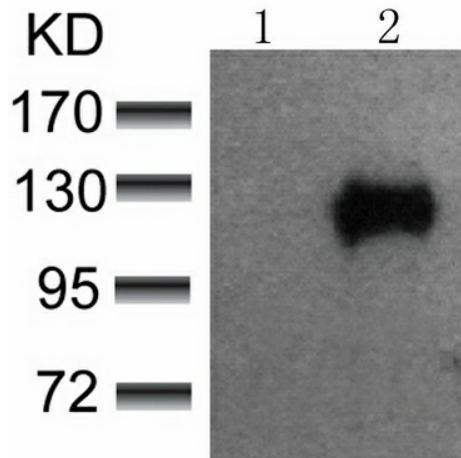


[View online »](#)

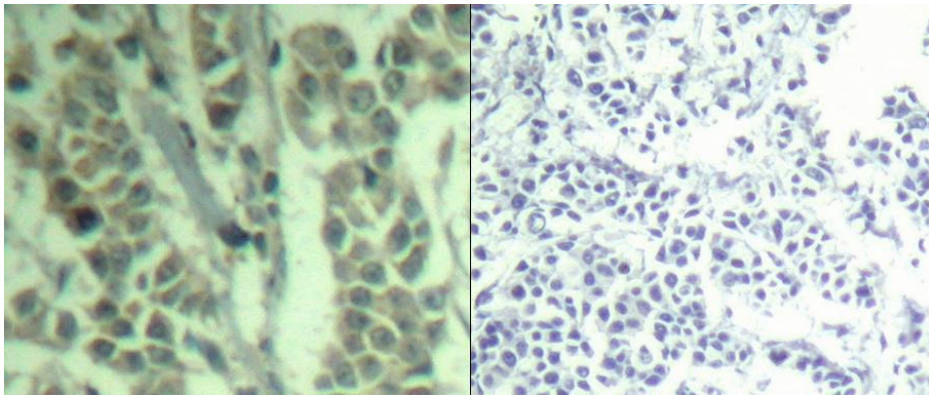
**Synonyms:** C-CBL; CBL2; FRA11B; NSLL; RNF55

**Protein Families:** Druggable Genome, Transcription Factors

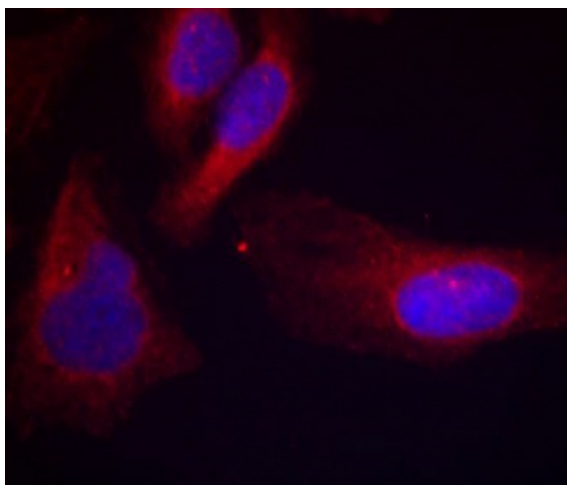
**Protein Pathways:** Chronic myeloid leukemia, Endocytosis, ErbB signaling pathway, Insulin signaling pathway, Jak-STAT signaling pathway, Pathways in cancer, T cell receptor signaling pathway, Ubiquitin mediated proteolysis

**Product images:**


Predicted band size: 120 kDa. Positive control: HT29 cells treated with UV lysate. Recommended dilution: 1/ 500-1000. (Gel: 8%SDS-PAGE Lane 1: HT29 cells untreated with UV lysate Lane 2: HT29 cells treated with UV lysate Lysates: 30 ug per lane Primary antibody: 1/500 dilution Secondary antibody: Goat anti Rabbit IgG - H&L (HRP) at 1/10000 dilution Exposure time: 1 minute)



Predicted cell location: Cytoplasm; Cell membrane. Positive control: Human breast carcinoma tissue. Recommended dilution: 1/ 50-100 The image on the left is immunohistochemistry of paraffin-embedded human breast carcinoma tissue using CBL (phospho-Tyr700) antibody at dilution 1/50, on the right is treated with the synthetic peptide. (Original magnification: x200)



Predicted cell location: Cytoplasm; Cell membrane. Positive control: HeLa cells. Recommended dilution: 1/ 100-200. The image is immunofluorescence of methanol-fixed HeLa cells using CBL (phospho-Tyr700) antibody at dilution 1/100. (Original magnification: ×200)